

# Sweet Seeds®



*Feminized Seeds*



# STAND UP FOR YOUR HIGH

2024 ENGLISH

[sweetseeds.com](https://sweetseeds.com)





We present our newest, most exquisite selection of strains for 2024, which will serve as ammunition to load the appliances you use to revolutionize your mind and battle against the hypocrisy of our governments. This is going to be the season for change, in which we shall all fight to elevate cannabis up to the highest plane, tearing down the barriers and taboos that have been holding it back all these years. We are going to strive for the long-awaited freedom of our beloved plant, but we are going to do it together, all of you and us.

To expand your collection of seeds that you can use to raise your voice, we have prepared six aromatic bombs, some with US genetic origins and all with the unmistakable Sweet Seeds® seal of quality. Are you ready?

Let's start with a 9<sup>th</sup> Generation autoflowering strain, which could actually be served for dessert thanks to its fruity, citrus aromas and enormous production of frosty buds: **Papaya Zoap Auto® (SWS107)**.

Another autoflowering treasure that has mesmerized us with its complex blend of aromas and flavors; spices, oranges, and that sweet-and-sour hint of the best Sour Diesels. We proudly present our new **Jealousy Z XL Auto® (SWS108)**.

This is another autoflowering option for this year, ideal for loading up with creative energy and indulging your palate: **Jet Fuel Mandarin XL Auto® (SWS109)**. A plant with dense buds that give off earthy, citrus scents and flavors reminiscent of mature mandarins and mangoes.

And to complete our new autos in the best way possible, an exciting creation from our breeders: **Diablo Rojo XL Auto® (SWS110)**. With reddish-purple flowers and high yields, the Diablo Rojo XL Auto® has a sweet aroma, with hints of citrus, incense, and red berries, which reminds some people of cola.

We must not forget our new photoperiod-dependent strains, and so that you don't come up short of artillery, we have two rapid and very potent missiles: **Black Muffin F1 Fast Version® (SWS111)**, plants with ultra-fast flowering, red flowers, and an intense, relaxing effect; and **Papaya Zoap F1 Fast Version® (SWS112)**, sent down from Olympus, one of the USA's greatest champions, famous for the quality of its flowers and delicious fruity aromas.

To demonstrate our support, all our packs will come with 1 or 2 free seeds of the same strain and quality.

We hope you enjoy a year fulfilling your dreams, for freedom and our rights as responsible consumers, let our battle cry be heard across the globe: ... **Stand up for your high!**

Thanks for choosing us!  
From the Sweet Seeds® team



**Autoflowering (aka automatic):**

Varieties that start flowering when they reach to a specific lifetime, regardless of the hours of light that they receive.



**3G, 4G, 5G, 6G... (in autoflowering):**

Identifies the generational steps and not the generations themselves. We established a new generational step every time the presence of Cannabis Ruderalis genetic in the autoflowering varieties is reduced. It is usually due to the cross with photoperiod-dependent genetics.



**Photoperiod Dependent:**

Varieties that flower depending on the number of hours of light that they receive. **F1 hybrid:** The first resulting generation of the hybridization between two different and stable varieties. **S1:** First resulting generation from the self-pollination of an individual. **S2:** Second generation of self-pollination.



**The Red Family:**

Family group of strains from the Sweet Seeds® catalog that develops purple or reddish tones.



**F1 Fast Version®:**

Photoperiod-dependent varieties with fast flowering. F1 hybrids between photoperiod-dependent and autoflowering varieties.

## The Red Family

	3+1	5+2	pg.
Dark Devil Auto®	30,00	50,00	4
<b>Diablo Rojo XL Auto®</b>	<b>30,00</b>	<b>50,00</b>	<b>5</b>
Red Strawberry Banana Auto®	28,00	46,00	6
Red Mimosa XL Auto®	30,00	50,00	6
Tropicanna Poison XL Auto®	28,00	46,00	7
Red Pure Auto CBD®	28,00	46,00	8
Bloody Skunk Auto®	24,00	40,00	8
Red Gorilla Girl XL Auto®	32,00	53,00	9
Red Poison Auto®	28,00	46,00	9
Strawberry Cola Sherbet F1 Fast Version®	30,00	50,00	10
<b>Black Muffin F1 Fast Version®</b>	<b>30,00</b>	<b>50,00</b>	<b>11</b>
Red Mandarine F1 Fast Version®	28,00	46,00	12
Red Hot Cookies®	28,00	46,00	12
Tropicanna Poison F1 Fast Version®	28,00	46,00	13

## F1 Fast Version®

Photoperiod dependent	3+1	5+2	pg.
Sweet Skunk F1 Fast Version®	20,00	33,00	34
<b>Papaya Zoap F1 Fast Version®</b>	<b>30,00</b>	<b>50,00</b>	<b>35</b>
Gorilla Sherbet F1 Fast Version®	30,00	50,00	36
Crystal Candy F1 Fast Version®	24,00	40,00	36
Green Poison F1 Fast Version®	28,00	46,00	37
Sweet Cheese F1 Fast Version®	20,00	33,00	38
Killer Kush F1 Fast Version®	24,00	40,00	38
Gorilla Girl F1 Fast Version®	32,00	53,00	39
Cream Caramel F1 Fast Version®	28,00	46,00	40
Sweet Mandarine Zkittlez F1 Fast Version®	30,00	50,00	41
Black Jack F1 Fast Version®	24,00	40,00	42
Cream Mandarine F1 Fast Version®	28,00	46,00	42
Jack 47 F1 Fast Version®	36,00	60,00	43
S.A.D. F1 Fast Version®	24,00	40,00	43

## Autoflowering

	3+1	5+2	pg.
Crystal Candy XL Auto®	24,00	40,00	14
Gorilla Girl XL Auto®	30,00	50,00	14
<b>Jealousy Z XL Auto®</b>	<b>30,00</b>	<b>50,00</b>	<b>15</b>
Mimosa Bruce Banner XL Auto®	30,00	50,00	16
Sweet Skunk Auto®	20,00	33,00	16
<b>Papaya Zoap Auto®</b>	<b>30,00</b>	<b>50,00</b>	<b>17</b>
Sweet Mandarine Zkittlez XL Auto®	30,00	50,00	18
Green Poison XL Auto®	28,00	46,00	18
<b>Jet Fuel Mandarine XL Auto®</b>	<b>30,00</b>	<b>50,00</b>	<b>19</b>
Sweet Gelato Auto®	28,00	46,00	20
+Speed Auto®	24,00	40,00	20
Cream Mandarine XL Auto®	28,00	46,00	21
Sweet Mimosa XL Auto®	30,00	50,00	22
Sweet Amnesia Haze XL Auto®	28,00	46,00	22
Cream Caramel Auto®	24,00	40,00	23
Big Devil XL Auto®	32,00	53,00	24
Strawberry Banana Gelato XL Auto®	28,00	46,00	24
Orange Apricot Glue XL Auto®	30,00	50,00	25
Sweet Cheese Auto®	20,00	33,00	26
Purple Punch OG XL Auto®	32,00	53,00	26
Cream Mandarine Auto®	28,00	46,00	27
Jack 47 XL Auto®	36,00	60,00	27
Skywalker OG Runtz XL Auto®	28,00	46,00	28
Killer Kush Auto®	24,00	40,00	28
Green Poison Auto®	28,00	46,00	28
Sweet Cheese XL Auto®	24,00	40,00	29
Runtz XL Auto®	32,00	53,00	29
<b>Sweet Mix Auto®</b>	<b>10 s.</b>	<b>35,00</b>	<b>30</b>
Sweet Zenzation XL Auto®	32,00	53,00	30
Black Jack Auto®	28,00	46,00	30
Bruce Banner Auto®	30,00	50,00	31
S.A.D. Auto®	20,00	33,00	31

## Photoperiod dependent

	3+1	5+2	pg.
Psicodelicia®	24,00	40,00	44
Green Poison®	28,00	46,00	45
Jack 47®	36,00	60,00	46
Sweet Amnesia Haze®	28,00	46,00	46
Cream Caramel®	28,00	46,00	47
Big Foot®	30,00	50,00	48
Black Jack®	24,00	40,00	48
S.A.D. Sweet Afgani Delicious S1®	24,00	40,00	49
Purple Punch OG®	30,00	50,00	50
San Fernando Lemon Kush®	36,00	60,00	50
Gorilla Girl®	36,00	60,00	51
Mohan Ram®	24,00	40,00	52
Crystal Candy®	24,00	40,00	52
Sweet Cheese®	20,00	33,00	53
<b>Sweet Mix Photoperiod-dependent®</b>	<b>10 s.</b>	<b>35,00</b>	<b>54</b>
Cream 47®	32,00	53,00	54

CBD

	3+1	5+2	pg.
Sweet Pure CBD®	30,00	50,00	55
Sweet Pure Auto CBD®	28,00	46,00	55
Honey Peach Auto CBD®	28,00	46,00	55
Cream Caramel CBD®	28,00	46,00	55

Pack **3** ► **+1 FREE**

Pack **5** ► **+2 FREE**

Packs include seeds of the same strain and quality



# The Red family

We present you our exclusive collection of red-flowered strains. A family of outstandingly beautiful plants in which the buds acquire reddish, purple and even bluish tones when they achieve maturity. The purple tones shown by the plants during flowering is induced by their abundance in anthocyanins, or anthocyanins, which are hydrosoluble pigments present in the vegetal cells. The flavonoids in general, and the anthocyanins in particular, have important pharmacological and therapeutic properties. Among other properties they are antioxidant, anti-allergic, antibiotic, anti-inflammatory, neuroprotective, etc. The plants acquire these tones in the buds during flowering and some specimens also get these tones in the leaves in that phase of their life cycle. Once harvested and dried, the buds acquire a very dark purple-reddish tone, almost black.



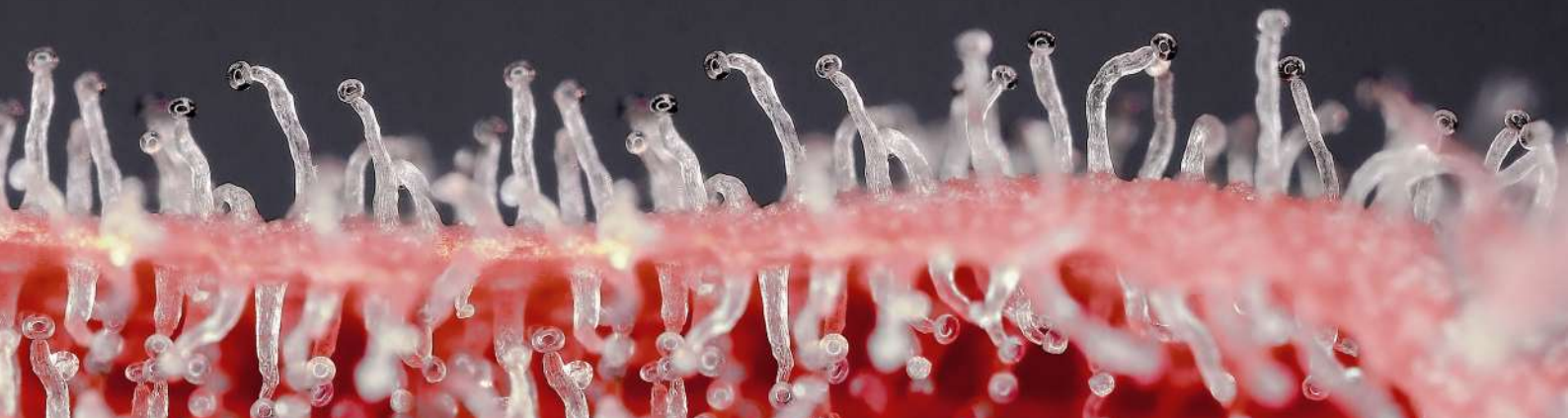
**Individuals  
red flowering**



**Medicinal  
properties**



**Genetic  
colouring**



## Dark Devil Auto®



**Variety SWS38**

**Indica:** 40,3% / **Sativa:** 55% / **Ruderalis:** 4,7%

**Indoor/Outdoor Harvest:**

8½ weeks from germination

**Height:** 80-130 cm

**Purple Flower:** approximately 95% of the specimens

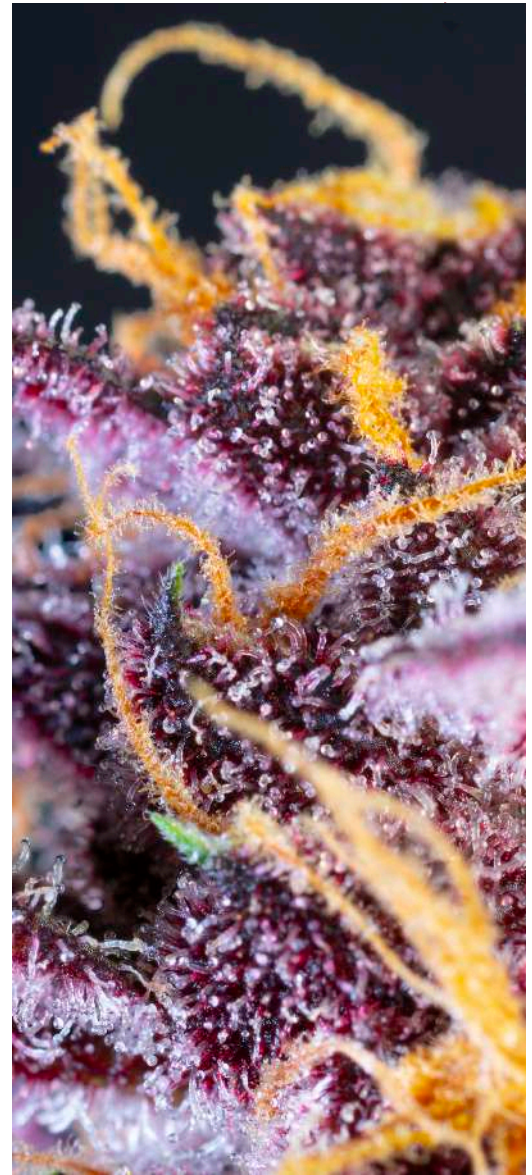
Autoflowering strain. This is the result of the hybridization between one of our most appreciated autoflowering genetics, the incredible Big Devil XL Auto® (SWS28), and an exotic autoflowering strain with purple flowers. The purple characteristic of this strain is inherited from its ancestors from the Chitral region in the Pakistani Hindu Kush, very close to Afghanistan, and contributes for a faster flowering period while bringing sweet aromas and purple colors. Dark Devil Auto® (SWS38) shows a strong hybrid vigor from germination. Plants grow with the appearance of indica-sativa hybrids, with a strong central stem, numerous side branches and a big main cola. Resin production is abundant both in the flowers and their surrounding leaves. Sweet and fruity aroma with incense hints and delightful citrus tones.



**3+1s 30,00 €**

**5+2s 50,00 €**





## Diablo Rojo XL Auto®

Extra-large, feminized strain with red flowers achieved by crossing selected individuals of the mythical red flower strains Dark Devil Auto® (SWS38) and Strawberry Cola Auto. A jewel of unequalled beauty in the cannabis crown. Diablo Rojo XL Auto® (SWS110) produces vigorous plants with an indica structure, abundant side branches, and reddish-purplish, compact, highly aromatic buds coated in copious resin – excellent for resin extraction techniques. The flowers have a sweet, fruity aroma with shades of red fruits and cola, as well as subtle hints of citrus and incense. The terpene profile creates a rich, vibrant olfactory experience that will meet the expectations of even the most discerning collectors. The strain has a potent, happy, and relaxing effect that rouses the imagination and conversation.



### Variety SWS110

**Indica:** 56,9% / **Sativa:** 40%

**Ruderalis:** 3,1%

### Indoor/Outdoor Harvest:

8 weeks from germination

**Height:** 50-120 cm

### Purple Flower:

approximately 85% of the specimens

3+1s

30,00 €

5+2s

50,00 €





## Red Strawberry Banana Auto®



**Variety SWS90**

**Indica:** 73,5% / **Sativa:** 25% / **Ruderalis:** 1,5%

**Indoor/Outdoor Harvest:** 8 weeks from germination

**Height:** 50-110 cm

**Purple Flower:** approximately 75% of the specimens

This autoflowering strain emanates from a cross of an elite Strawberry Banana clone with specially selected plants from our Red Poison Auto® (SWS39) autoflowering strain known for its purple flowers. The plants follow a mainly indica growth pattern and produce compact red buds covered with an abundance of trichomes. Red Strawberry Banana Auto® (SWS90) is excellent for high-quality, aromatic resin extractions with purple, pink or reddish hues. Around 75% of plants develop purple flowers. This strain has an intense sweet, fruity aroma that conjures up memories of fruit-flavoured candies with hints of walnuts and rocket salad leaves. It flowers very quickly and mature buds can be harvested just 7-8 weeks after the appearance of the cotyledons. The buds have a relaxing effect and help boost the imagination and creativity.



## Red Mimosa XL Auto®



**Variety SWS104**

**Indica:** 59,3% / **Sativa:** 39,2% / **Ruderalis:** 1,5%

**Indoor/Outdoor Harvest:** 8 weeks from germination

**Height:** 60-130 cm

**Purple Flower:** approximately 85% of the specimens

An autoflowering, red-flowered, and feminized version of our Sweet Mimosa XL Auto® (SWS94). This strain was developed through the hybridization and subsequent stabilization of strains selected from our Sweet Mimosa XL Auto® and red-flowering Red Strawberry Banana Auto® (SWS90) families. This is an extra-large, autoflowering strain with excellent yields, resin-loaded buds, and a great aroma. It has a primarily indica character, so it produces dense, highly compact, resinous buds. Red Mimosa XL Auto® (SWS104) has an intense sweet, fruity aroma of Mimosa oranges with hints of nuts (walnuts), rocket salad and ground pepper. It has a lively, relaxing effect, while also stimulating the imagination, communication skills, and creativity.

3+1s 28,00 €

5+2s 46,00 €

3+1s 30,00 €

5+2s 50,00 €





## Tropicanna Poison XL Auto®

The autoflowering, red-flowered, feminized version of our Tropicanna Poison F1 Fast Version® (SWS85). Contains genetic material from one of the most famous “Super Strong” Cookies strains in the US, no less than Tropicanna Cookies (Girl Scout Cookies x Tangie). It is the outcome of crossing an elite, selected Tropicanna Cookies clone, which contains a red flower phenotype, and our much-loved autoflowering strain Red Poison Auto® (SWS39). The plants produce high yields with resinous buds, THC levels of up to 24% and elevated terpene levels. The buds have an excellent aroma and taste, remarkably sweet, intense and heavy, with tones of mango, earthy, wooden hints, and a subtle Skunk background.



### Variety SWS95

**Indica:** 58,4% / **Sativa:** 40%

**Ruderalis:** 1,6%

### Indoor/Outdoor Harvest:

8 weeks from germination

**Height:** 60-120 cm

### Purple Flower:

approximately 85% of the specimens

3+1s

28,00 €

5+2s

46,00 €





< 1%  
THC

## Red Pure Auto CBD®



**Variety SWS81**

**Indica:** 58,4% / **Sativa:** 40% / **Ruderalis:** 1,6%

**THC:CBD Ratio:** (1:34-1:37)

**Indoor/Outdoor Harvest:** 9 weeks from germination

**Height:** 50-90 cm

**Purple Flower:** approximately 95% of the specimens

This “pure CBD” autoflowering strain is notable for its red flowers, very low THC levels (0,4-0,5%) and high CBD content (15-17%). It is a cross between two of our own strains: Sweet Pure CBD® (SWS65) and Red Poison Auto® (SWS39). It looks like most other indica plants with a large central bud, short side branches, a strong stem and plenty of resin. The strain offers a sweet, earthy aroma and taste, with shades of fresh pine or cypress and hints of fruits of the forest. It has a relaxing effect that washes away anxiety, which makes it ideal for medicinal users who do not want to feel any psychotropic effects from the THC.



2  
AWARDS

## Bloody Skunk Auto®



**Variety SWS44**

**Indica:** 62,4% / **Sativa:** 32,9% / **Ruderalis:** 4,7%

**Indoor/Outdoor Harvest:** 8 weeks from germination

**Height:** 60-110 cm

**Purple Flower:**

approximately 95% of the specimens

Autoflowering strain. This strain is the result of a cross between our Sweet Skunk Auto® (SWS34) and a selected genetic line of Red Poison Auto® (SWS39) that contributes with the purple flowered feature. The result is a marvelous and aromatic purple flowered strain featuring a deep Skunk aroma, extremely pleasant and sweet. The structure of the plant is very similar to the classic Skunk strains, with the shape of a fir and lots of side branches. Large flowers covered with aromatic resin and a huge main cola on top. The flower clusters are very dense and in the course of flowering they get completely covered in resin.

3+1s 28,00 €

5+2s 46,00 €

3+1s 24,00 €

5+2s 40,00 €





## Red Gorilla Girl XL Auto®



**Variety SWS89**

**Indica:** 52,3% / **Sativa:** 45,2% / **Ruderalis:** 2,5%

**Indoor/Outdoor Harvest:** 8-9 weeks from germination

**Height:** 60-120 cm

**Purple Flower:**

approximately 85% of the specimens

A red-flowered, extra tall, autoflowering version of our cherished "Super Strong" strain Gorilla Girl® (SWS74). The outcome of a cross between our Gorilla Girl XL Auto® (SWS82) [Gorilla Girl® x Sweet Gelato Auto® (SWS76)] and our autoflowering strain known for its purple flowers, Bloody Skunk Auto® (SWS44). It has a potent, stimulating effect thanks to its very high THC levels of up to 21%, or even greater in some individual plants. The Red Gorilla Girl XL Auto® (SWS89) has an intense sweet, spicy aroma and taste, with hints of lemon and fresh cypress. It produces dense and highly resinous buds that are ready for harvesting just 9 weeks after the first leaf appears. Approximately 85% of the plants grow with purple flowers.

## Red Poison Auto®



**Variety SWS39**

**Indica:** 76,9% / **Sativa:** 20% / **Ruderalis:** 3,1%

**Indoor/Outdoor Harvest:** 8 weeks from germination

**Height:** 60-120 cm

**Purple Flower:**

approximately 95% of the specimens

Autoflowering strain. Hybridization between one of the most appreciated strains from our catalog, the amazing Green Poison® (SWS14), and an exotic purple flowered autoflowering strain, descending from Pakistani Kush ancestors. Red Poison Auto® (SWS39) grows with the appearance of an indica-sativa hybrid. It shows great hybrid vigor from the first stages of growth. The plants develop a strong main stem and long flexible side branches. This strain produces thick dense buds covered with aromatic resin. Taste and aroma are both very pleasant and intense. Sweet and fruity with a soft Skunk background.

3+1s 32,00 €

5+2s 53,00 €

3+1s 28,00 €

5+2s 46,00 €





**Variety SWS106**

**Indica:** 80% / **Sativa:** 20%

**Indoor Blooming:** 7 weeks

**Outdoor Harvest:**

early September

**Purple Flower:**

approximately 75% of the specimens

## Strawberry Cola Sherbet F1 Fast Version®

This is an ultra-fast flowering, photoperiod-dependent, feminized strain with red flowers. It is also a first filial generation (F1) cross between a photoperiod-dependent elite clone of the famous Californian Sunset Sherbet and the autoflowering strain Strawberry Cola Auto. Strawberry Cola Sherbet F1 Fast Version® (SWS106) is an indica/sativa polyhybrid, although it is predominantly indica. The plants have large, dense buds covered with lots of highly aromatic resin. This strain has a very pleasant, potent, and complex aroma, with shades of red fruits and cola, earthy and woody hints, and fresh, citrus undertones. It has a happy, relaxing effect that stimulates reflective introspection, concentration, and insight.

3+1s

30,00 €

5+2s

50,00 €



NEW



## Black Muffin F1 Fast Version®

This is an ultra-fast flowering, photoperiod-dependent, feminized strain that develops red flowers. Black Muffin F1 Fast Version® (SWS111) is a first filial generation (F1) cross between a photoperiod-dependent elite clone from our Red Hot Cookies® (SWS83) and the select autoflowering strain Black Lemon Auto. The strain has a vigorous hybrid character and grows long side branches with thick, compact buds that are soaked with aromatic resin. The buds turn a dark purple color in the flowering stage, emitting a thick, potent, sweet-and-sour aroma with fresh citrus tones of lemons and mandarins, plus a tart undertone of red berries. Black Muffin F1 Fast Version® has an intense yet balanced, relaxing, and happy effect that stimulates conversation and the imagination.



### Variety SWS111

**Indica:** 60% / **Sativa:** 40%

**Indoor Blooming:** 7 weeks

### Outdoor Harvest:

early September

### Purple Flower:

approximately 60% of the specimens

3+1s

30,00 €

5+2s

50,00 €





## Red Mandarin F1 Fast Version®



### Variety SWS79

**Indica:** 55% / **Sativa:** 45%

**Indoor Blooming:** 7-8 weeks

**Outdoor Harvest:** mid to late September

**Purple Flower:** approximately 80% of the specimens

Our first red-flowered photoperiod-dependent strain. This is the resulting hybrid from the cross between our Red Poison Auto® (SWS39) and a photoperiod-dependent elite clone of Tangie (California Orange x Skunk hybrid) from a rare and unusual purple-flowered phenotype, with a sensational intense mandarin taste and aroma. This strain develops resinous and productive buds with beautiful red flowers that are ready to harvest in just 7-8 weeks. The aroma of Red Mandarin F1 Fast Version® (SWS79) is probably the most exquisite among all the red-flowered strains in the market, featuring a powerful sweet and mandarin citrus aroma with fresh hints of blue cypress. An ideal plant for top quality highly aromatic extractions with a gorgeous appearance for the reddish and rosy tones of its resin.



## Red Hot Cookies®



### Variety SWS83

**Indica:** 40% / **Sativa:** 60%

**Indoor Blooming:** 8 weeks

**Outdoor Harvest:** late September

**Purple Flower:** approximately 60% of the specimens

Top-quality genetic as a result of crossing a clone of an American “Super Strong” Cookie strain – Tropicanna Cookies – with a clone selected from a second American strain, the potent mandarin-scented Tangie (Girl Scout Cookies x Tangie). We chose exotic lineages with red flower phenotypes when crossing these two varieties. The red flowers develop in around 60% of the offspring and tend to appear in the last few weeks of flowering, beginning with the lower branches and flowers before spreading to the top of the plant. Red Hot Cookies® (SWS83) is a “Super Strong”, highly productive and resinous strain with high THC levels of up to 25%. It has an excellent scent and taste; it is sweet, deep and dense, with marked tones of mandarin and mango, plus hints of fruits of the forest.

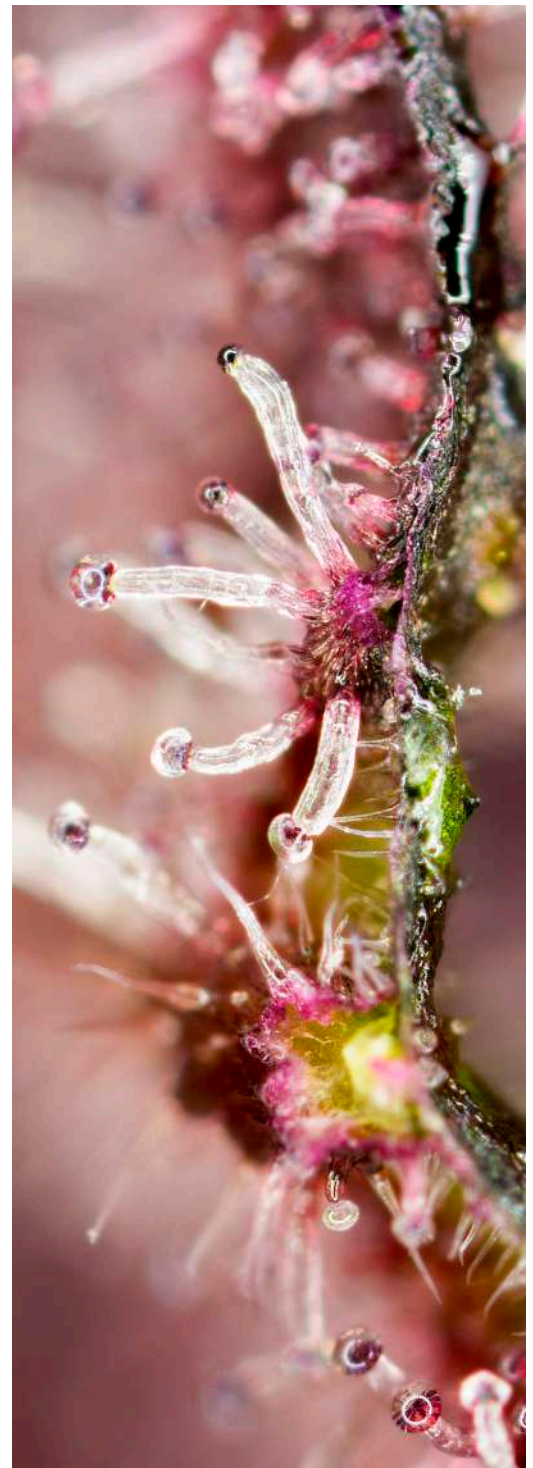
3+1s 28,00 €

5+2s 46,00 €

3+1s 28,00 €

5+2s 46,00 €





## Tropicanna Poison F1 Fast Version®

These plants, with red flowers and ultrafast flowering, are a photoperiod-dependent, feminized version of one of the most famous varieties in the US “Super Strong” Cookies family, Tropicanna Cookies (Girl Scout Cookies x Tangie). It is the cross of an elite, selected Tropicanna Cookies clone, with a red flower phenotype, and our highly regarded, red flower, autoflowering strain Red Poison Auto® (SWS39). The plants are very productive and resinous, with THC levels of up to 24% and extremely high terpene levels. The buds have an excellent aroma and taste; they are very sweet, intense and dense, with tones of mango, earthy, wooden hints, and a subtle Skunk background.



### Variety SWS85

**Indica:** 60% / **Sativa:** 40%

**Indoor Blooming:** 6-7 weeks

**Outdoor Harvest:**

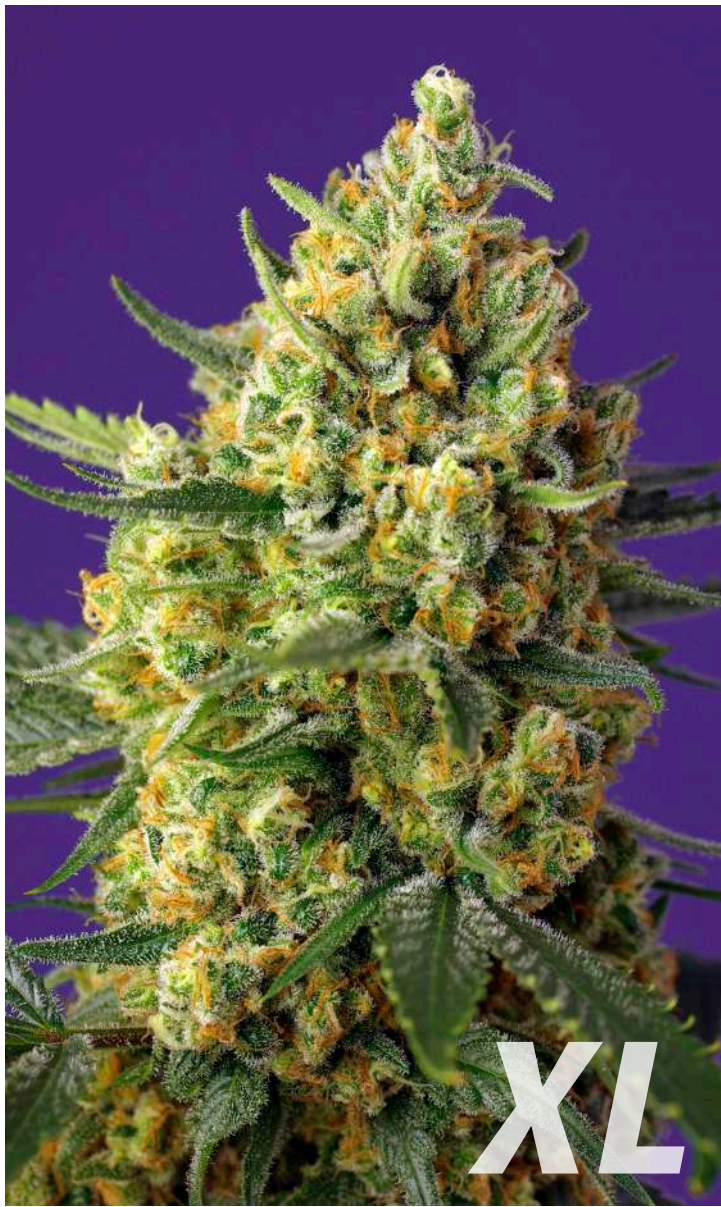
late August, early September

**Purple Flower:**

approximately 80% of the specimens

3+1s 28,00 € 5+2s 46,00 €





## Crystal Candy XL Auto®



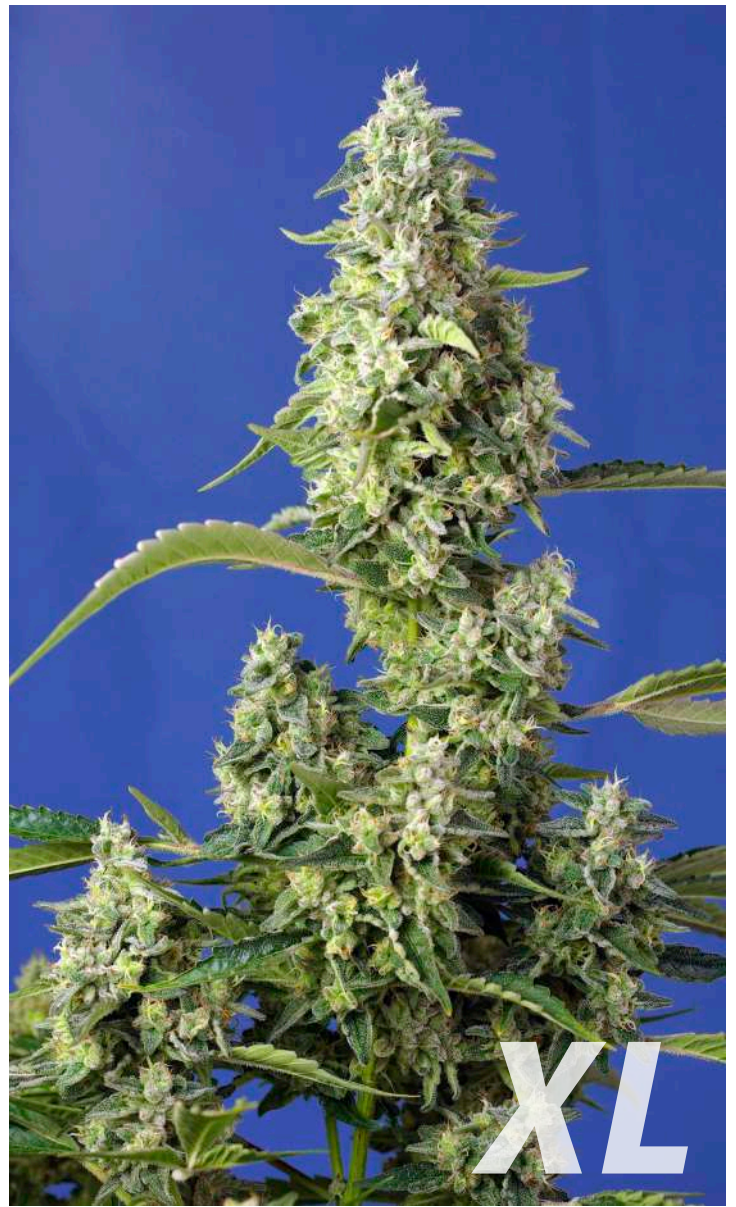
**Variety SWS87**

**Indica:** 60% / **Sativa:** 38,4% / **Ruderalis:** 1,6%

**Indoor/Outdoor Harvest:** 8 weeks from germination

**Height:** 90-140 cm

A tall, 4<sup>th</sup> Generation autoflowering strain. It is produced by selecting and crossing tall examples of our Crystal Candy Auto® (SWS61) plants. The genetics have been developed as part of a special programme within the Sweet Seeds® R&D Department designed to discover interesting, exquisite and subtly sweet aromas that evoke an olfactory sensation of sweet shops. The buds have a very sweet, fruity scent with aromatic tones of bubble gum and jelly beans, complemented by shades of acidic strawberries and ripe melons. This strain produces large amounts of aromatic resin crystals and beautiful buds. The plants easily grow over 1 metre tall.



## Gorilla Girl XL Auto®



**Variety SWS82**

**Indica:** 42,1% / **Sativa:** 57,5% / **Ruderalis:** 0,4%

**Indoor/Outdoor Harvest:** 9 weeks from germination

**Height:** 60-120 cm

A 6<sup>th</sup> Generation autoflowering strain. A tall, "Super Strong" marijuana strain produced by crossing two of most powerful varieties in the Cookies family: Gorilla Girl® x Sweet Gelato Auto® (SWS74 x SWS76). It has a potent, stimulating effect with very high THC levels of up to 25%. Individual plants can even surpass this threshold. The buds have an intense, sweet and fruity aroma and taste, with tones of blue cypress and wood complemented by citric, earthy shades. The plants' buds are heavily loaded with resin, have long trichomes and very large flower calyxes. This strain is known for its exuberant resin production which completely coats the calyxes with aromatic trichomes.

3+1s 24,00 €

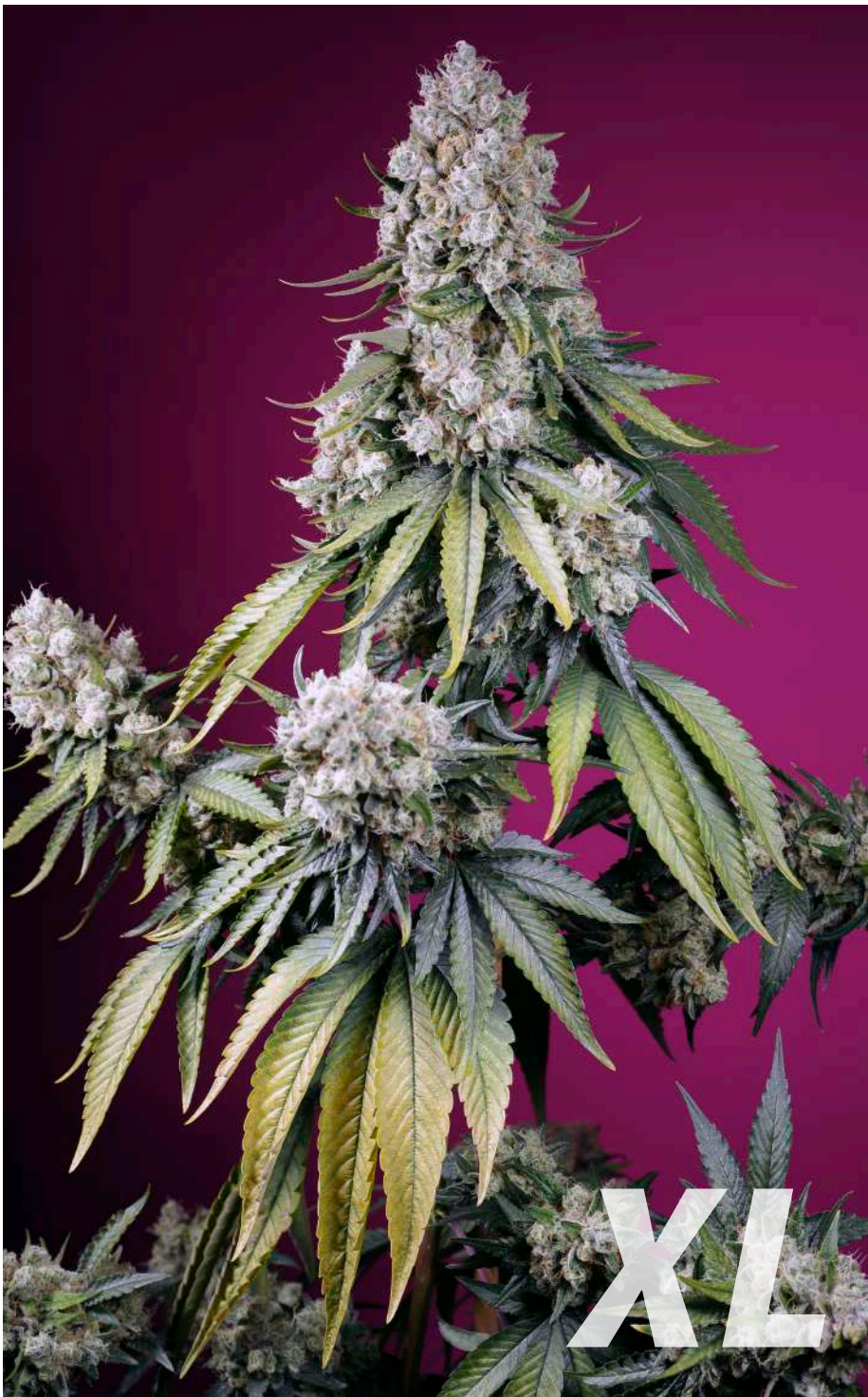
5+2s 40,00 €

3+1s 30,00 €

5+2s 50,00 €



NEW



## Jealousy Z XL Auto®

A 6<sup>th</sup> Generation, autoflowering, feminized, extra-large strain created by the hybridization of the renowned and highly regarded Californian Jealousy with our very own Sweet Mandarin Zkittlez XL Auto® (SWS102). This strain is a balanced indica/sativa hybrid that produces plants with strong stems and branches to bear the weight of the large buds. The buds develop a purplish color when they start flowering. The fully formed buds are completely covered in an impressive layer of large, very pungent trichomes. The strain has an intense aroma and a deliciously complex terpene profile, with a spiced, sweet-and-sour fragrance that includes tones of Sour Diesel, oranges, and a woody, earthy undertone. Jealousy Z XL Auto® (SWS108) has a relaxing, cheerful effect that stimulates the imagination and creativity.



### Variety SWS108

**Indica:** 56,3% / **Sativa:** 43,3%

**Ruderalis:** 0,4%

**Indoor/Outdoor Harvest:**

8 weeks from germination

**Height:** 50-130 cm

3+1s

30,00 €

5+2s

50,00 €

Autoflowering 15





## Mimosa Bruce Banner XL Auto®



### Variety SWS101

**Indica:** 35,5% / **Sativa:** 64,4% / **Ruderalis:** 0,1%

**Indoor/Outdoor Harvest:** 8 weeks from germination

**Height:** 50-130 cm

An 8<sup>th</sup> Generation autoflowering strain. The stable hybridization of two excellent strains developed from US genetics. The product of crossing a specially selected very aromatic and resinous elite clone from the popular Mimosa family [Clementine (Tangie x Lemon Skunk) x Purple Punch (Larry OG x Grand Daddy Purple)] with our own Bruce Banner Auto® (SWS91). Mimosa Bruce Banner XL Auto® (SWS101) is an extra-large autoflowering strain with highly resinous and aromatic buds. These plants have a truly exquisite scent that is particularly sweet and attractive, with shades of citrus fruits reminiscent of mandarin and strawberry, fresh cypress, and pleasant undertones of smoked cheese. It has a potent, happy, even euphoric, and long-lasting effect that enhances the imagination and creativity. Some plants develop flowers and leaves with purple and reddish hues at the end of the flowering period.



## Sweet Skunk Auto®



### Variety SWS34

**Indica:** 58% / **Sativa:** 38,9% / **Ruderalis:** 3,1%

**Indoor/Outdoor Harvest:** 7½ weeks from germination

**Height:** 60-90 cm

3<sup>rd</sup> Generation autoflowering strain. Sweet Seeds® has created this hybrid as a tribute to this classic and extremely loved family of cannabis. This is the resulting hybrid from the cross between our Early Skunk elite clone and an autoflowering version of Critical Mass from the Sweet Seeds® R&D Department. The resulting hybrid has been backcrossed twice with the Early Skunk elite clone. This fast flowering autoflowering strain is one of the best yielding and most resinous varieties, producing dense buds that get totally covered with trichomes in the final stages of flowering. It features an intense skunk aroma with a very sweet background, scented with hints of spices.

3+1s 30,00 €

5+2s 50,00 €

3+1s 20,00 €

5+2s 33,00 €



NEW



## Papaya Zoap Auto®

A 9<sup>th</sup> Generation autoflowering strain. This strain is a polyhybrid obtained by crossing four different high-quality strains with US genetics [Bruce Banner Auto® (SWS91) x Papaya] x (Zkittlez x Zoap). The result is an exceptional autoflowering, highly resinous, aromatic plant – a sensory delight that blends sweet aromas reminiscent of mango, papaya, and citrus with earthy, smoky, and spicy tones. As the strain is a balanced indica/sativa polyhybrid, the plants have a strong, highly branched structure that produces several buds on the side branches and a large central bud. The buds often acquire a purple hue by the end of flowering. Papaya Zoap Auto® (SWS107) has a happy, relaxing effect that helps stimulate the imagination while also helping you concentrate on creative or routine tasks.



### Variety SWS107

**Indica:** 60% / **Sativa:** 40%

**Ruderalis:** 0% (less than 0,1%)

**Indoor/Outdoor Harvest:**

8 weeks from germination

**Height:** 50-110 cm

3+1s

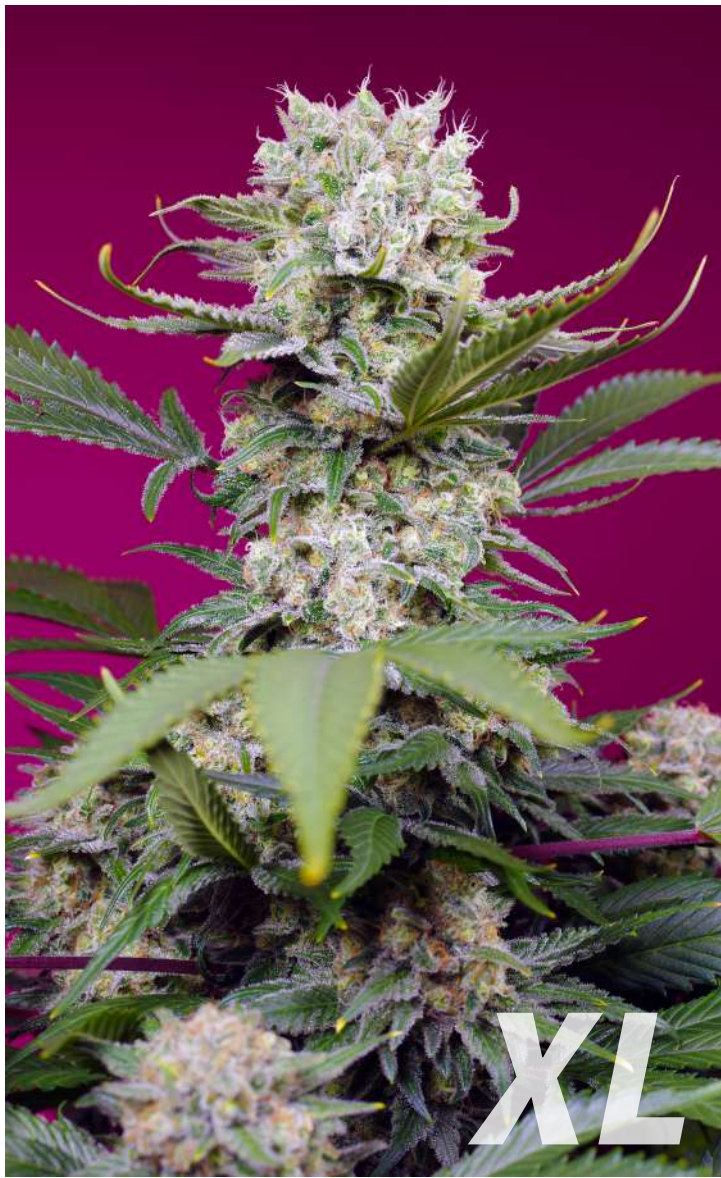
30,00 €

5+2s

50,00 €

Autoflowering 17





## Sweet Mandarin Zkittlez XL Auto®



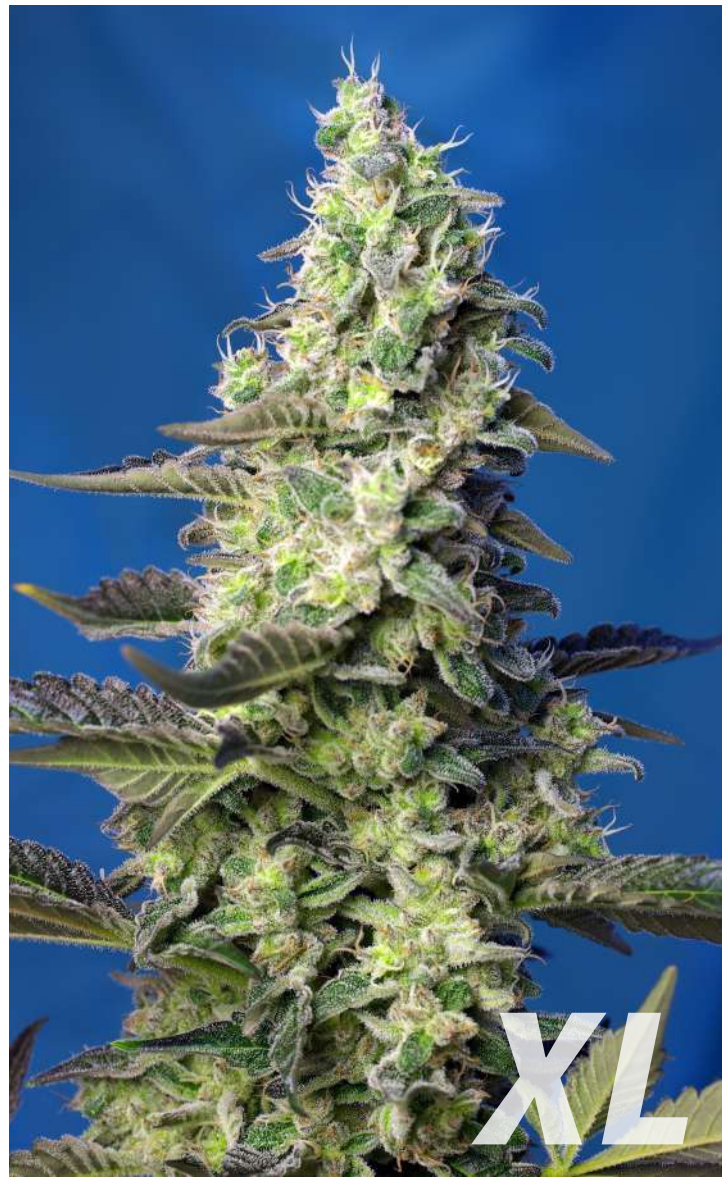
### Variety SWS102

**Indica:** 57,5% / **Sativa:** 41,7% / **Ruderalis:** 0,8%

**Indoor/Outdoor Harvest:** 8 weeks from germination

**Height:** 55-135 cm

One of our 5<sup>th</sup> Generation autoflowering strains. The result of crossing an elite clone of Zkittlez (very potent, resinous and with a strong orange and mandarin citrus aroma akin to Sour Diesel) and our Sweet Mimosa XL Auto® (SWS94), which also emits a scent with hints of orange and mandarin. The final product is a vigorous, extra-large autoflowering strain with highly resinous, potent, and aromatic buds. This strain has a delicious aroma, with spicy shades of Sour Diesel, orange and mango, plus woody undertones and subtle hints of pine and freshly cut grass. Some plants develop flowers and leaves with purple and reddish hues at the end of the flowering period. Sweet Mandarin Zkittlez XL Auto® (SWS102) has an energetic, cheerful effect that stimulates the imagination and creativity.



## Green Poison XL Auto®



### Variety SWS71

**Indica:** 56,9% / **Sativa:** 40% / **Ruderalis:** 3,1%

**Indoor/Outdoor Harvest:** 8 weeks from germination

**Height:** 80-125 cm

3<sup>rd</sup> Generation autoflowering strain. Tall-stemmed version of one of our most appreciated autoflowering strains: Green Poison Auto® (SWS30). Green Poison XL Auto® (SWS71) was developed within a recurrent selection program of tall-stemmed Green Poison Auto® specimens across multiple generations. These seeds produce plants that height around 25% more than their ancestors, with a higher flower and resin production. The tastes and aromas of this strain are very pleasant and intense, with sweet and fruity tones, a sweet Skunk background and hints that are reminiscent of rucola and walnuts.

3+1s 30,00 €

5+2s 50,00 €

3+1s 28,00 €

5+2s 46,00 €



NEW



## Jet Fuel Mandarin XL Auto®

6<sup>th</sup> Generation autoflowering, feminized, extra-large strain. The result of crossing an excellent clone of Jet Fuel (Aspen OG x High Country Diesel), one of the most cherished members of the Diesel family, and a hybrid of two of our most aromatic autoflowering strains, Cream Mandarin XL Auto® x Orange Apricot Glue XL Auto® (SWS55 x SWS103). With a robust, compact structure, the plants have strong branches and dense, highly aromatic, resinous buds that release an explosion of sweet citrus aromas interlaced with earthy scents. The flavor is a fusion of mature mandarins and notes of mango that creates a unique taste experience. This strain has a balanced and invigorating effect that lifts the mind and relaxes the body, combining the stimulating energy of Jet Fuel with the calm, relaxing influence of Cream Mandarin XL Auto® and Orange Apricot Glue XL Auto®.



### Variety SWS109

**Indica:** 37,8% / **Sativa:** 61,8%

**Ruderalis:** 0,4%

**Indoor/Outdoor Harvest:**

9 weeks from germination

**Height:** 50-135 cm

3+1s

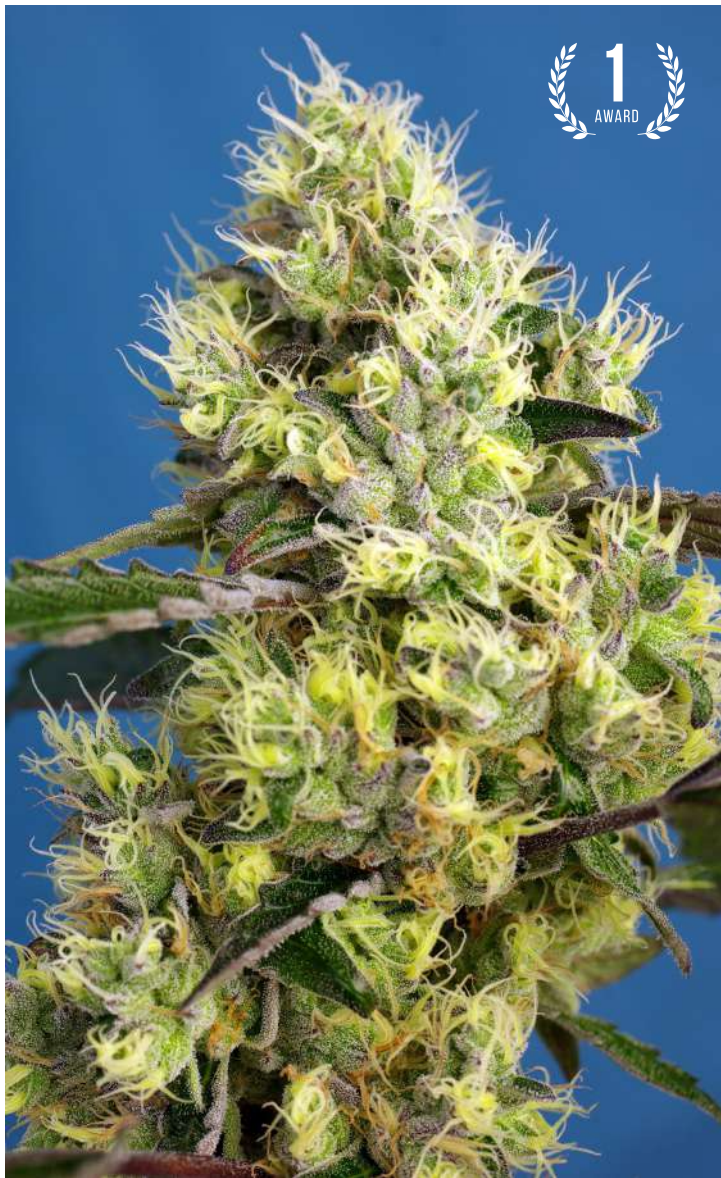
30,00 €

5+2s

50,00 €

Autoflowering 19





## Sweet Gelato Auto®



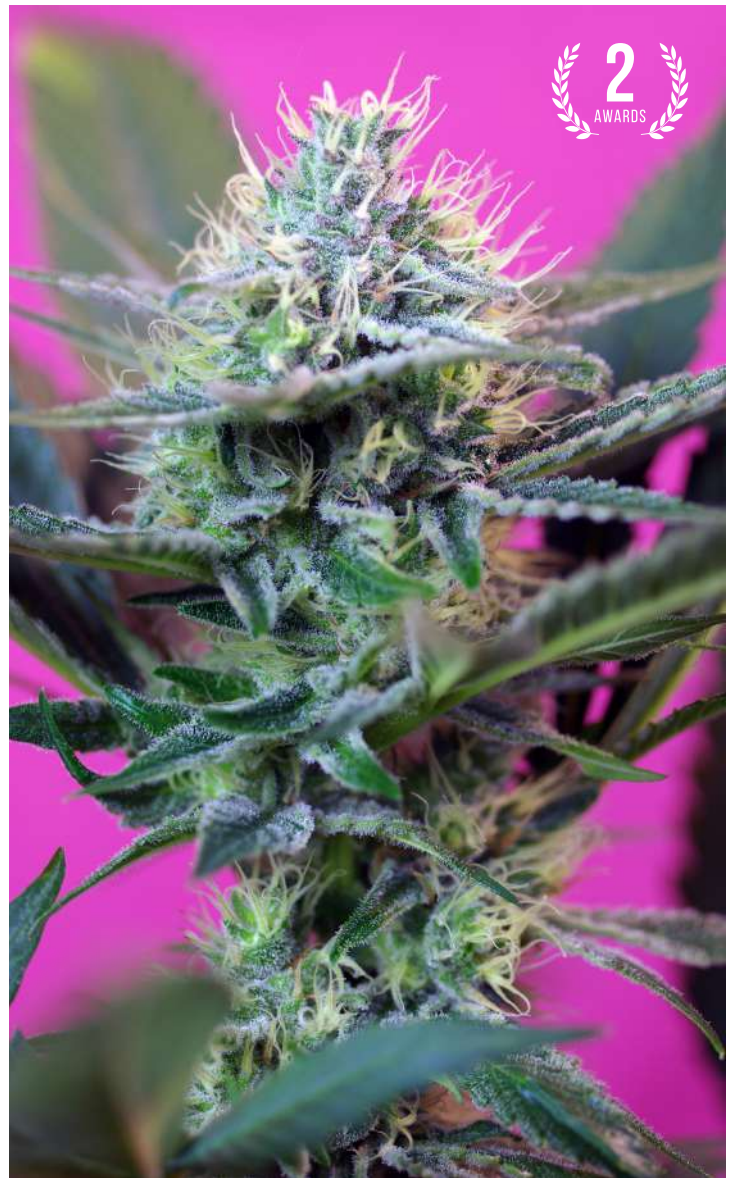
### Variety SWS76

**Indica:** 44,2% / **Sativa:** 55% / **Ruderalis:** 0,8%

**Indoor/Outdoor Harvest:** 8 weeks from germination

**Height:** 60-100 cm

5<sup>th</sup> Generation autoflowering strain. Autoflowering version of one of the most powerful and famous American lines, coming from the San Francisco Bay (California): Gelato (Sunset Sherbet x Girl Scout Cookies "Thin Mint") is one of the most appreciated exponents of the Cookies family, featuring excellent aroma and high production of THC. In order to introduce the autoflowering genes in Sweet Gelato Auto® (SWS76) we used our Killer Kush Auto® (SWS56) which was itself developed with OG Kush genetics. The result is an autoflowering genetic featuring sweet and fruity aroma with a strong Kush presence, including earthy and woody tones leaning to dried fruit (hazelnuts) and soft touches of mint and citrus. This plant develops dense buds with high production of big-sized trichomes.



## +Speed Auto®



### Variety SWS27

**Indica:** 48,4% / **Sativa:** 48,5 % / **Ruderalis:** 3,1%

**Indoor/Outdoor Harvest:** 7 weeks from germination

**Height:** 50-90 cm

3<sup>rd</sup> Generation autoflowering strain. This hybrid is the result of crossing an autoflowering Critical Mass genetic line from the Sweet Seeds® R&D Department, chosen for its fast flowering and pleasant intense aroma, with a selected strain of very fast flowering, our Speed Devil #2 Auto® (SWS25). This autoflowering strain has been developed through the search for the genetic traits responsible for very fast flowering. The final result is a strain that is ready to harvest only 7 weeks after germination. It produces thick buds covered with aromatic resin. Sweet and fruity aromas with hints of yeast and cheese.

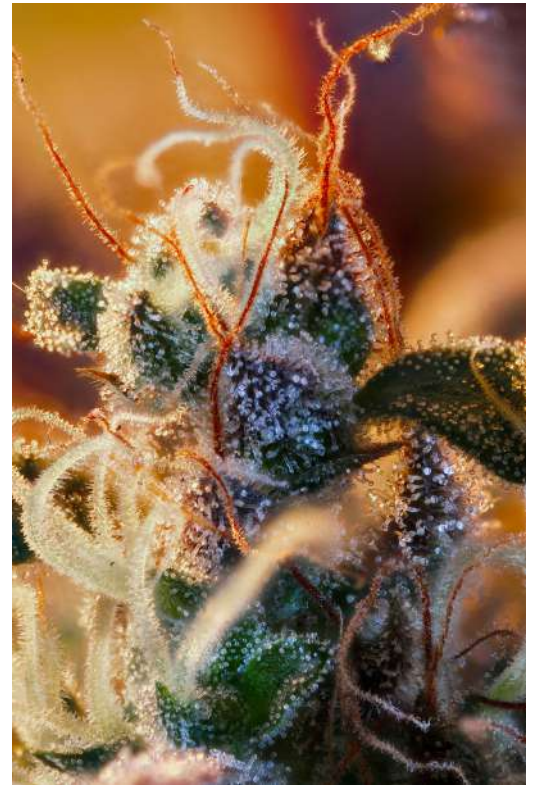
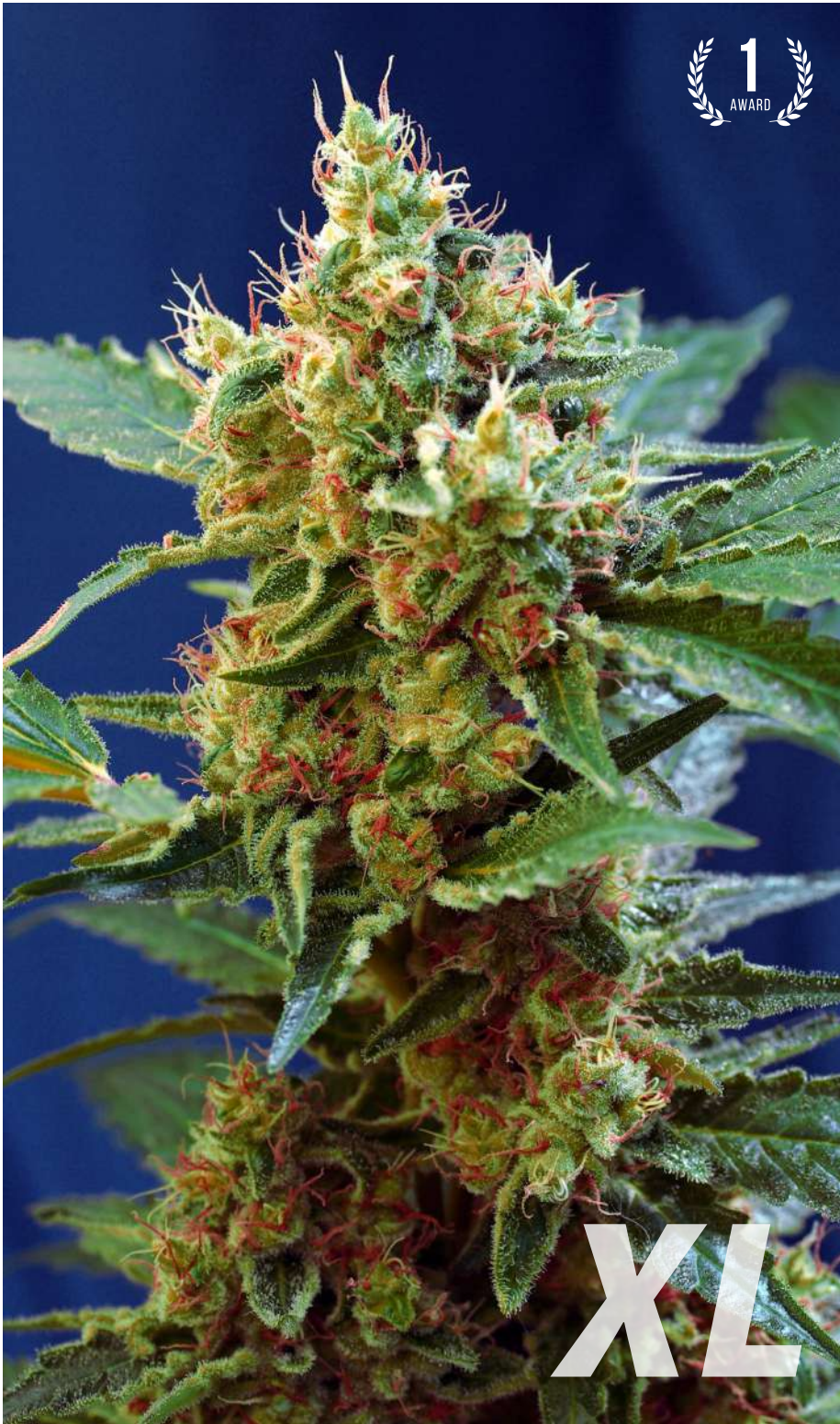
3+1s 28,00 €

5+2s 46,00 €

3+1s 24,00 €

5+2s 40,00 €





## Cream Mandarin XL Auto®

Tall-stemmed autoflowering strain. This high yielding 4<sup>th</sup> Generation autoflowering strain is the resulting hybrid from the cross between selected specimens of our Cream Mandarin Auto® (SWS29) and a Super Tai'98 elite clone. The genetic coming from the Super Tai'98 elite clone contributes with interesting sativa characteristics to this hybrid, such as bigger size, but also subtle aromatic and spicy tones with hints of wood and nuts. The so much appreciated Cream Mandarin Auto® genetic contributes with traits from the indica side, such as high flower and resin production, but also sweet and fresh aromas with tones of citric fruits of the mandarin orange type.



**Variety SWS55**

**Indica:** 35% / **Sativa:** 63,4%

**Ruderalis:** 1,6%

**Indoor/Outdoor Harvest:**

9 weeks from germination

**Height:** 110-150 cm

3+1s

28,00 €

5+2s

46,00 €

**Autoflowering 21**





## Sweet Mimosa XL Auto®



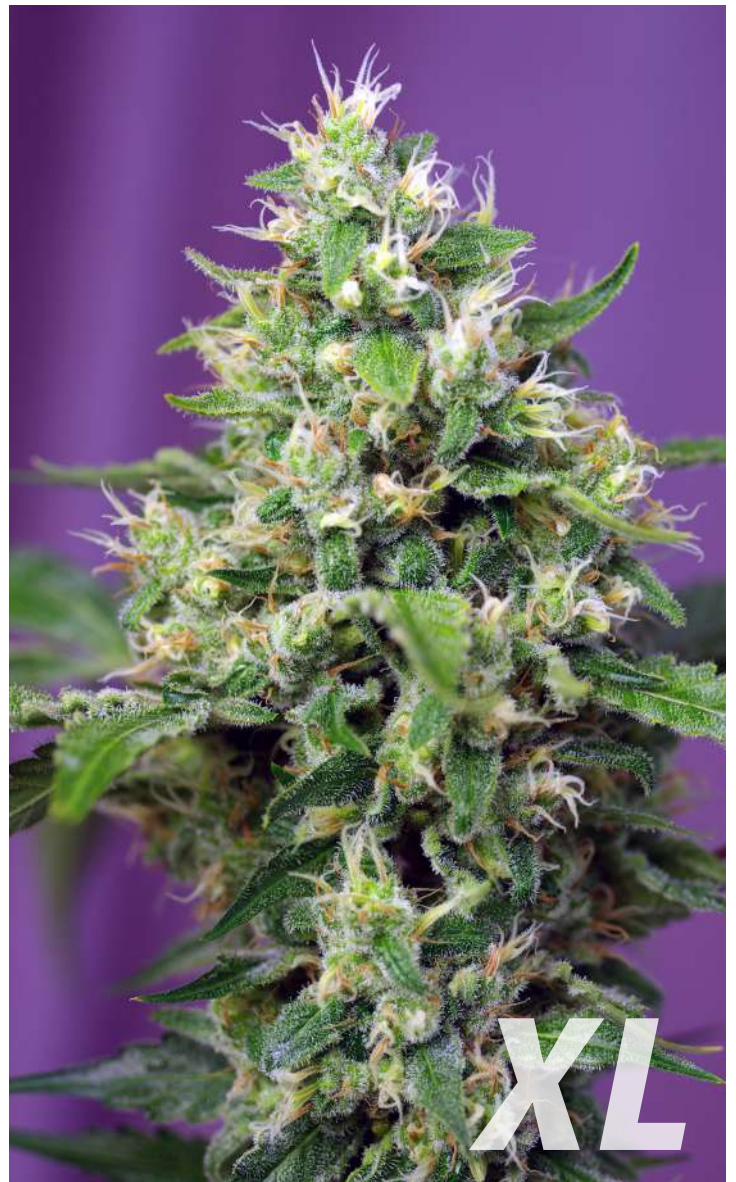
**Variety SWS94**

**Indica:** 45% / **Sativa:** 53,4% / **Ruderalis:** 1,6%

**Indoor/Outdoor Harvest:** 9 weeks from germination

**Height:** 60-130 cm

A 4<sup>th</sup> Generation autoflowering strain. Autoflowering version of the Mimosa strain [Clementine (Tangie x Lemon Skunk) x Purple Punch (Larry OG x Grand Daddy Purple)] that combines some of the latest and most popular strains from the US. We have introduced genes from our very own Cream Mandarin Auto® (SWS29) to introduce the autoflowering properties. The resulting cross still has the same characteristic aroma and flavour of Mimosa, with earthy shades and citric tones of orange and mandarin, and some plants develop purple and reddish flowers and leaves at the end of flowering. It is also a high-production strain with large, resin-soaked buds. Sweet Mimosa XL Auto® (SWS94) has a lively, cheerful effect and stimulates the imagination and creativity.



## Sweet Amnesia Haze XL Auto®



**Variety SWS57**

**Indica:** 24,4% / **Sativa:** 74% / **Ruderalis:** 1,6%

**Indoor/Outdoor Harvest:** 8-9 weeks from germination

**Height:** 60-120 cm

A 4<sup>th</sup> Generation autoflowering strain. We have used the famous Amnesia Haze clone known as "Cordobesa" to develop this strain. The autoflowering genetics were introduced from selected strains of our S.A.D. Sweet Afgani Delicious Auto® (SWS24), which lends this particular cross its sweet, musky undertone. The strain has a very pleasant, yet complex and deep, aroma of incense, with sweet, pungent shades, and hints of lemon, wood and nuts. It is an extremely productive, tall, autoflowering strain with highly resinous buds.

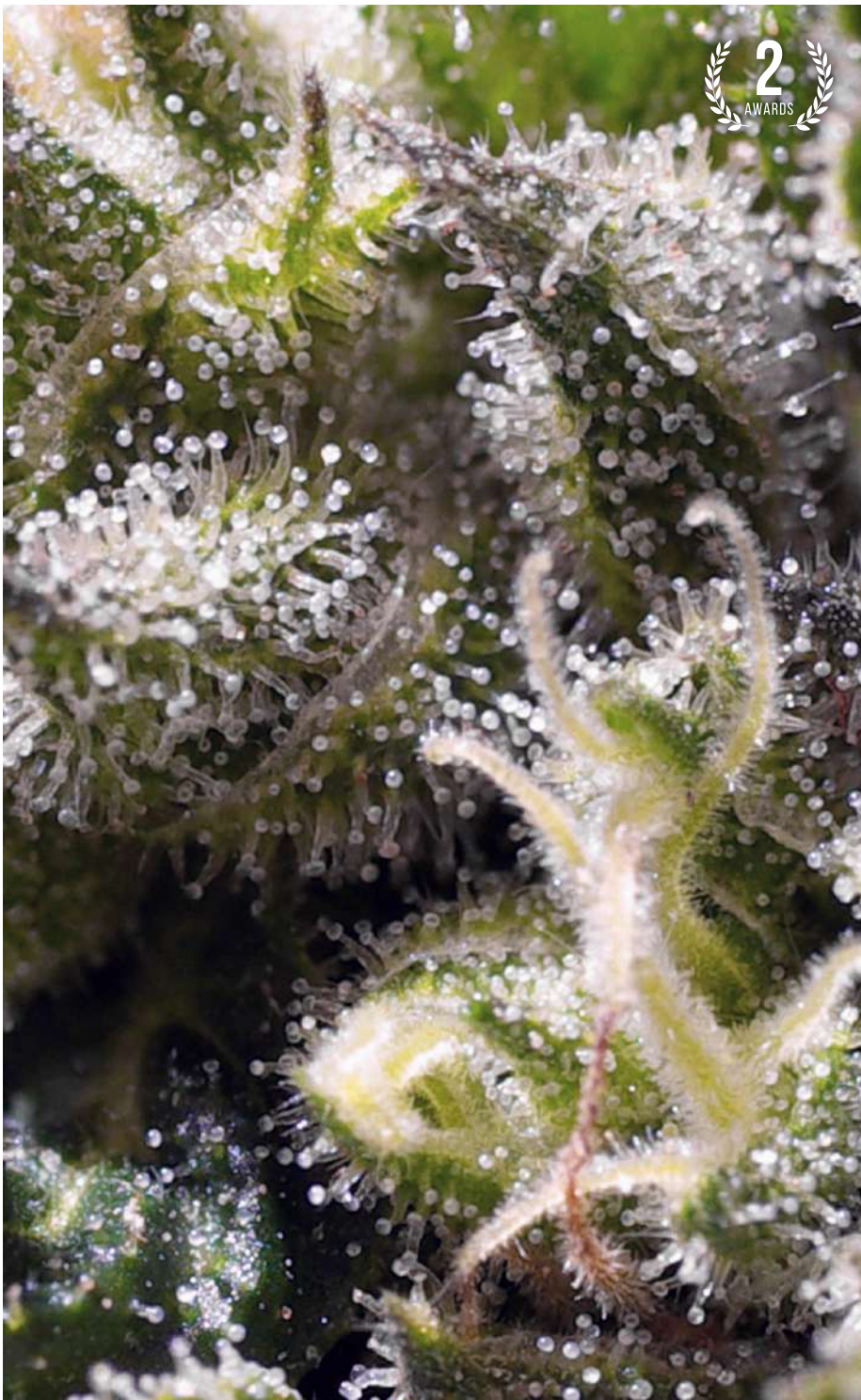
3+1s 30,00 €

5+2s 50,00 €

3+1s 28,00 €

5+2s 46,00 €





## Cream Caramel Auto®

3<sup>rd</sup> Generation autoflowering strain. Autoflowering version of our Cream Caramel® (SWS04). Result of the cross between our best 2<sup>nd</sup> Generation autoflowering strains with our Cream Caramel®. Autoflowering with great hybrid vigor, short internodal distance and good development of side branches. The plants feature abundant production of dense and sticky resin that gets harder with the buds drying process. This high-quality autoflowering strain features very dense buds with pungent sweet aroma with earthy tones, fast flowering and strong effect. Genetics such as Cream Caramel Auto® (SWS22) were the foundation for the re-evolution of the autoflowering strains. At the end of flowering the plants reach the same resinous and appetizing appearance as their photoperiod-dependent sisters.



### Variety SWS22

**Indica:** 83% / **Sativa:** 13,9%

**Ruderalis:** 3,1%

**Indoor/Outdoor Harvest:**

8 weeks from germination

**Height:** 40-90 cm

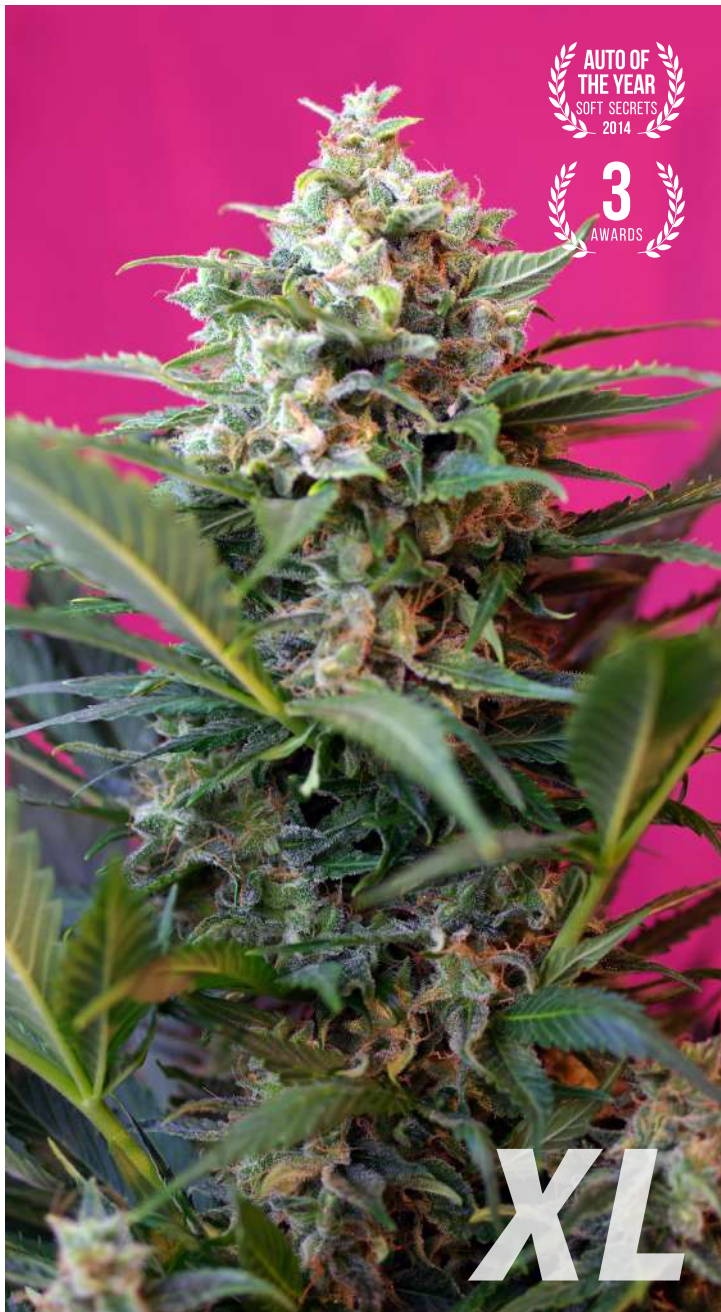
3+1s

24,00 €

5+2s

40,00 €





## Big Devil XL Auto®



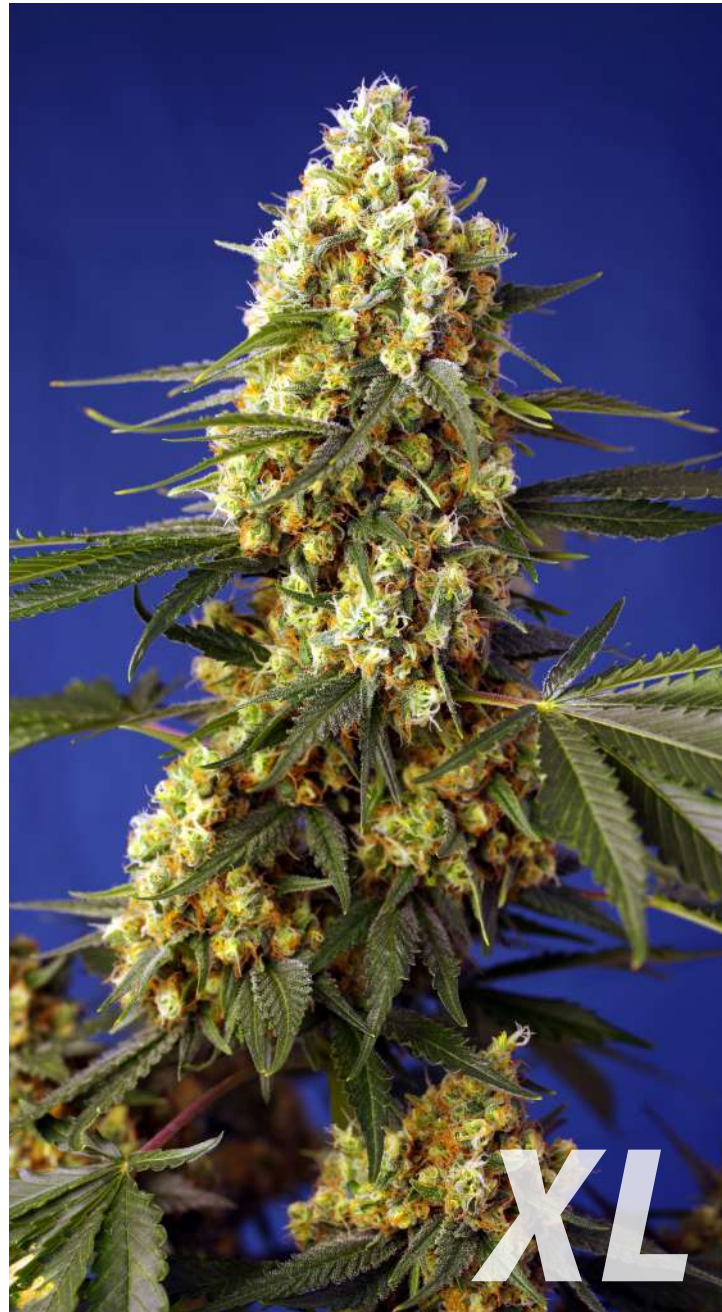
Variety SWS28

**Indica:** 31,9% / **Sativa:** 65% / **Ruderalis:** 3,1%

**Indoor/Outdoor Harvest:** 9½ weeks from germination

**Height:** 110-160 cm

3<sup>rd</sup> Generation autoflowering. This hybrid is the result of crossing our Big Devil #2 Auto® (SWS20) with an autoflowering Jack Herer from the Sweet Seeds® R&D Department. The height of the previous version is increased and plants reach between 110 cm and 160 cm, with numerous large side branches. The thickness and density of the buds is also increased and they turn up to be spectacularly loaded with aromatic resin. Incense aroma with a citrus hint of lemon.



## Strawberry Banana Gelato XL Auto®



Variety SWS99

**Indica:** 57,1% / **Sativa:** 42,5% / **Ruderalis:** 0,4%

**Indoor/Outdoor Harvest:** 8 weeks from germination

**Height:** 60-125 cm

A 6<sup>th</sup> Generation autoflowering strain. It is the outcome of crossing an elite Strawberry Banana clone [Crockett's Banana Kush x Bubblegum (strawberry phenotype)] and select individuals from our Sweet Gelato Auto® (SWS76) strain. The plants have an exquisite, potent aroma, which is both fruity and sweet, with tones of strawberry chewing gum, OG Kush, wood and rocket salad leaves. This strain flowers quickly, producing lots of resin-laden buds. It has a high THC content thanks to its compact buds covered with large trichomes.

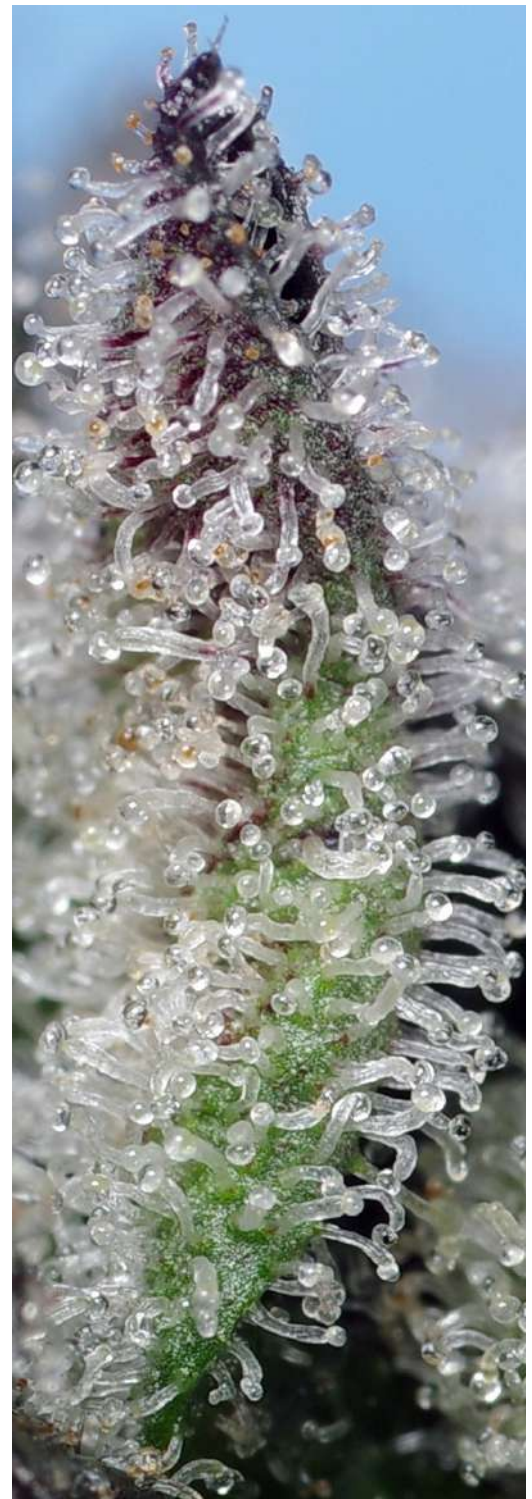
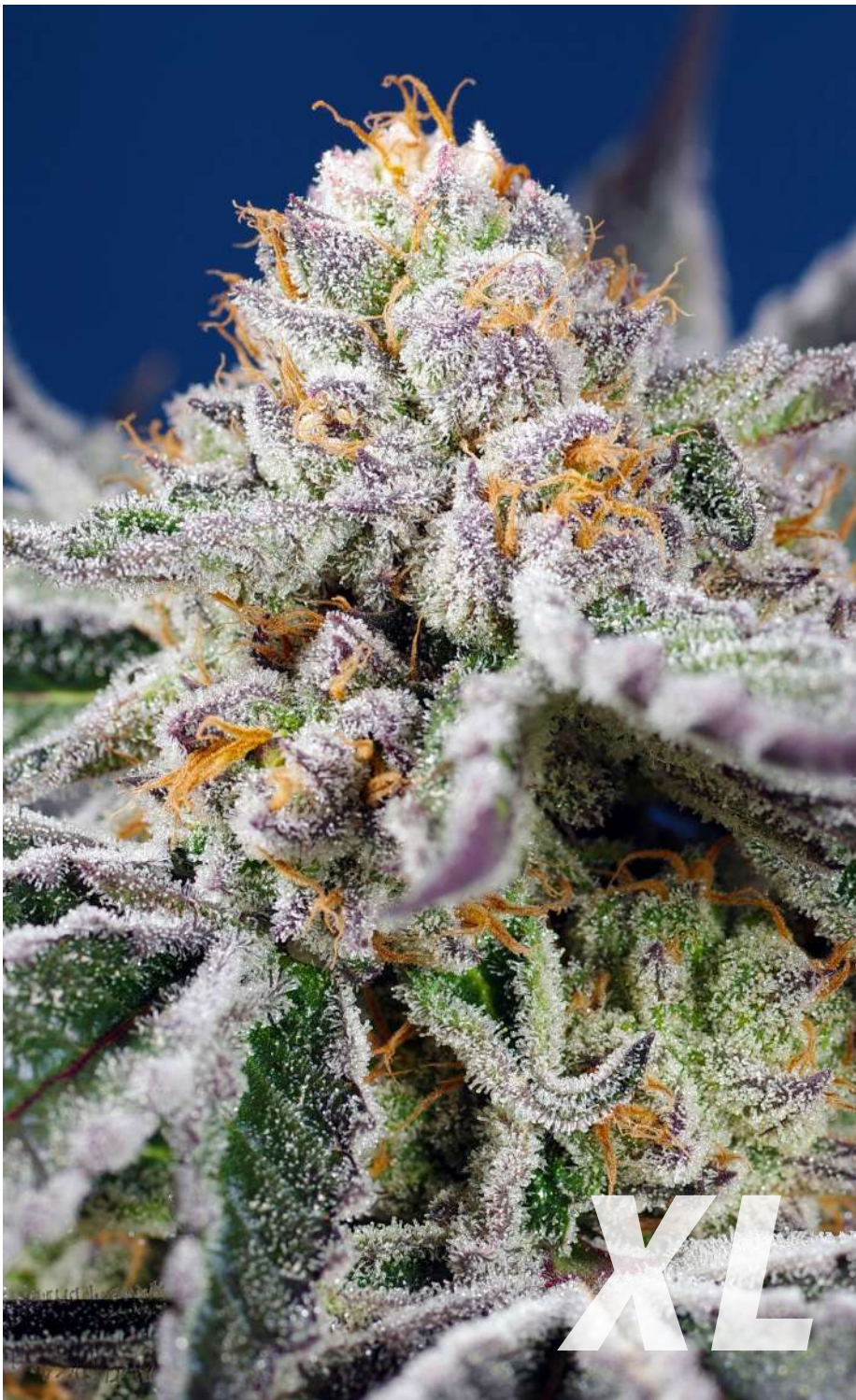
3+1s 32,00 €

5+2s 53,00 €

3+1s 28,00 €

5+2s 46,00 €





## Orange Apricot Glue XL Auto®

A 7<sup>th</sup> Generation autoflowering strain. This strain is a cross of a resinous, aromatic Orange Apricot x MAC elite clone with our very own Gorilla Girl XL Auto® (SWS82). The outcome is an extra-large autoflowering strain with highly resinous, potent, and aromatic buds that meet the expectations of even the most demanding collectors. The plants have a sweet, fruity aroma that includes spicy, citric tones and a fresh, earthy scent. They yield dense, sticky buds that are coated with copious amounts of resin. Orange Apricot Glue XL Auto® (SWS103) has a well-balanced effect that is both euphoric and yet relaxing, while it also helps boost creativity, communication, and concentration levels. Some plants develop flowers and leaves with purple and reddish hues at the end of the flowering period.



**Variety SWS103**

**Indica:** 56% / **Sativa:** 43,8%

**Ruderalis:** 0,2%

**Indoor/Outdoor Harvest:**

8 weeks from germination

**Height:** 55-135 cm

3+1s

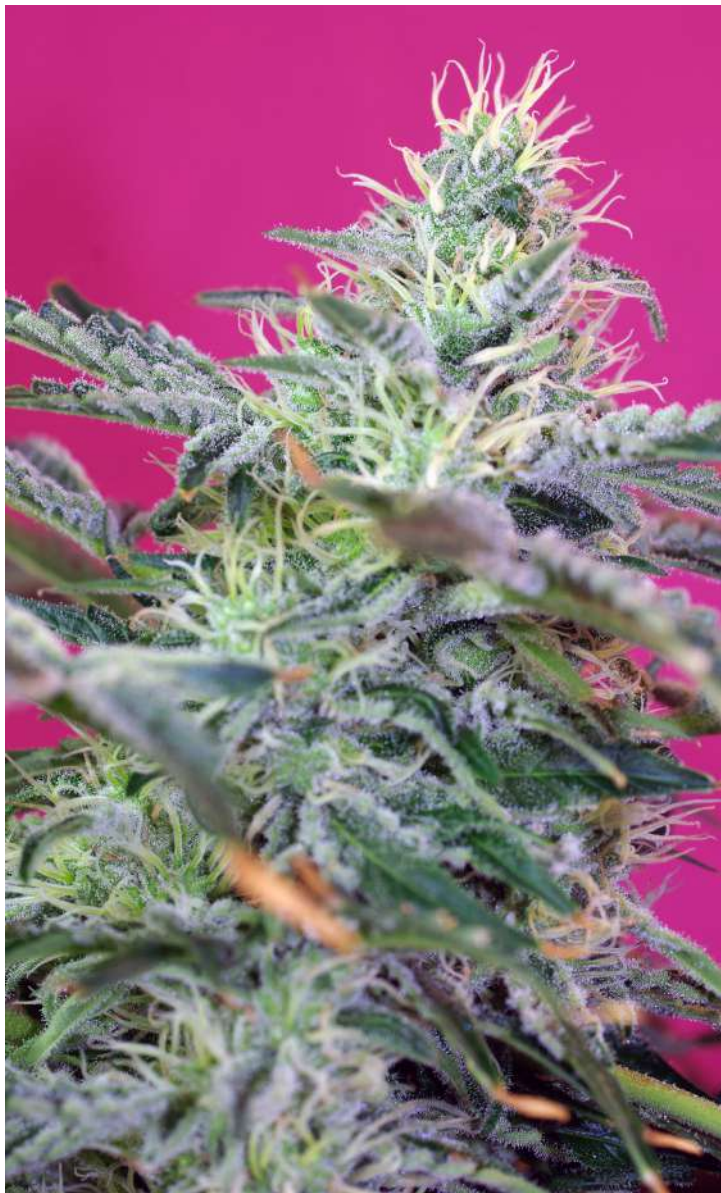
30,00 €

5+2s

50,00 €

**Autoflowering 25**





## Sweet Cheese Auto®



**Variety SWS33**

**Indica:** 35,6% / **Sativa:** 61,3% / **Ruderalis:** 3,1%

**Indoor/Outdoor Harvest:** 8 weeks from germination

**Height:** 60-110 cm

3<sup>rd</sup> Generation autoflowering strain. This hybrid is the result of crossing a selected genetic line of Fast Bud Auto® (SWS16) and a Sweet Cheese® (SWS19) elite clone from the Sweet Seeds® R&D Department. The resulting hybrid was backcrossed twice with the Sweet Cheese® clone in order to establish the Cheese aroma. This strain produces a long and thick central bud which is very compact and resinous. It has retained the intense and very sweet aroma characteristic of Sweet Cheese®, with matured spicy cheese tones and soft hints of lemon.



## Purple Punch OG XL Auto®



**Variety SWS96**

**Indica:** 71,5% / **Sativa:** 27,7% / **Ruderalis:** 0,8%

**Indoor/Outdoor Harvest:** 8 weeks from germination

**Height:** 60-120 cm

One of our 5<sup>th</sup> Generation autoflowering strains. This is the autoflowering version of our Purple Punch OG® (SWS93) strain. It is the outcome of crossing an elite, selected clone of Purple Punch OG® [Purple Punch (Larry OG x Grand Daddy Purple) x Star Killer (Skywalker OG Kush x Rare Dankness #2)] and our popular autoflowering strain Killer Kush Auto® (SWS56). They yield plants with juicy buds covered in strikingly aromatic resin. Purple Punch OG XL Auto® (SWS96) plants have a very high terpene content, making them ideal for resin extractions. They have a deliciously sweet, complex aroma and flavour, with strong, spicy tones of OG Kush. The effect is intense, but relaxing. Thanks to the strain's Grand Daddy Purple ancestry, some plants are notable for purple or reddish hues in their leaves and flowers.

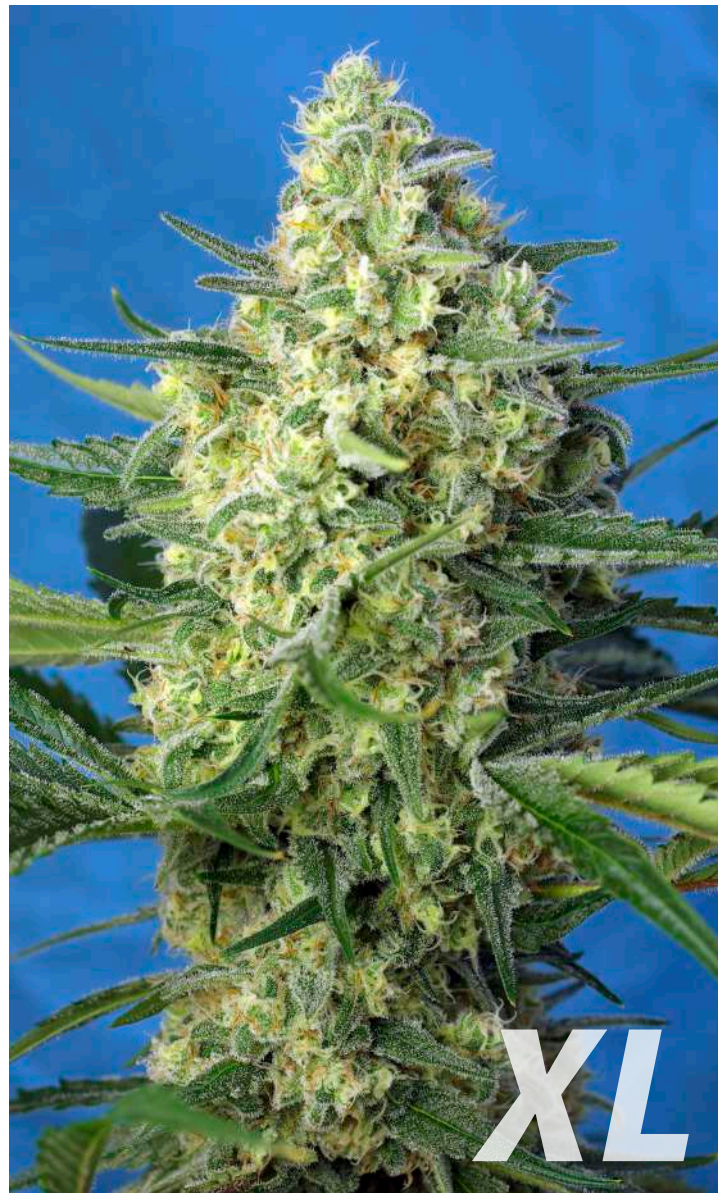
3+1s 20,00 €

5+2s 33,00 €

3+1s 32,00 €

5+2s 53,00 €





## Cream Mandarin Auto®



**Variety SWS29**

**Indica:** 60% / **Sativa:** 36,9% / **Ruderalis:** 3,1%

**Indoor/Outdoor Harvest:** 9 weeks from germination

**Height:** 50-110 cm

3<sup>rd</sup> Generation autoflowering strain. This is the result of the development of an extremely special strain from Cream Caramel Auto® (SWS22) (2G) with very high production and pronounced sweet citrus aromas of the mandarin orange type. This curious and exquisite Cream Caramel Auto® strain has been hybridized with an elite clone of our NYC Diesel® (SWS06) to strengthen the mandarin orange citrus aromas. In the end of flowering many plants acquire purple and reddish tones.

## Jack 47 XL Auto®



**Variety SWS78**

**Indica:** 20% / **Sativa:** 76,9% / **Ruderalis:** 3,1%

**Indoor/Outdoor Harvest:** 9 weeks from germination

**Height:** 65-130 cm

3<sup>rd</sup> Generation autoflowering strain. Tall-stemmed version of one of our most appreciated autoflowering strains, the amazing Jack 47 Auto® (SWS31). Jack 47 XL Auto® (SWS78) was developed through a recurrent selection program of tall-stemmed and high production specimens of Jack 47 Auto® along multiple generations. This is a high yielding autoflowering strain that preserves a powerful hybrid vigor. The plants develop compact buds covered in outstandingly aromatic resin. The tastes and aromas of this genetic are sweet and fresh, with lemony citrus tones and a touch of incense. Probably one of the most powerful autoflowering strains in the market.

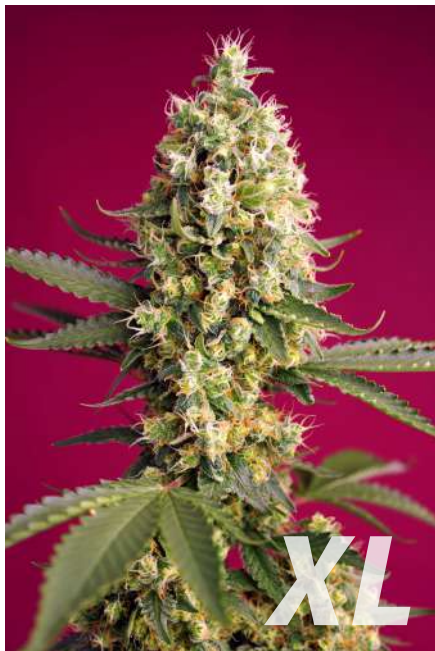
3+1s 28,00 €

5+2s 46,00 €

3+1s 36,00 €

5+2s 60,00 €





## Skywalker OG Runtz XL Auto®



**Variety SWS97**

**Indica:** 63,5% / **Sativa:** 36,3%

**Ruderalis:** 0,2%

**Indoor/Outdoor Harvest:**

8 weeks from germination

**Height:** 60-120 cm

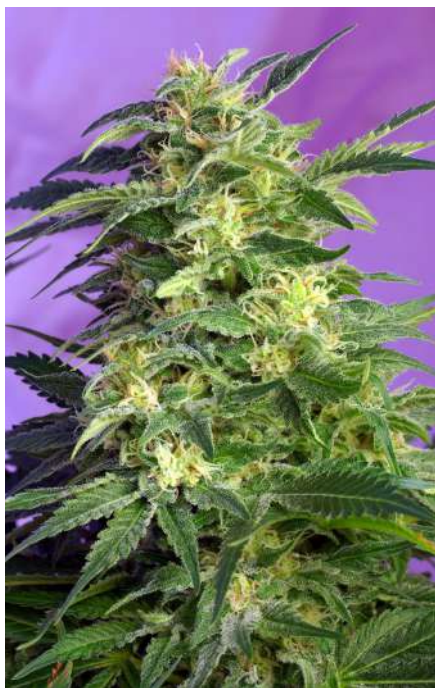
3+1s

28,00 €

5+2s

46,00 €

A 7<sup>th</sup> Generation autoflowering strain. This is our autoflowering version of Skywalker OG (OG Kush x Skywalker), which is mainly indica, gives high yields and is a US West Coast favourite; in summary, an OG Kush strain with excellent performance. We have incorporated autoflowering genes from one of our own strains, the Runtz XL Auto® (SWS88) [Runtz (Zkittlez x Gelato) x Sweet Gelato Auto® (SWS76)]. The end result is very productive, resinous, aromatic plants that are perfect for extracting resin and concentrates. The plants have an intense aroma and flavour, combining sweet, fruity tones with earthy, spicy shades of blue cypress, all reminiscent of the Diesel and OG Kush families but with a sweeter undertone.



## Killer Kush Auto®



**Variety SWS56**

**Indica:** 63% / **Sativa:** 35,4%

**Ruderalis:** 1,6%

**Indoor/Outdoor Harvest:**

8 weeks from germination

**Height:** 60-100 cm

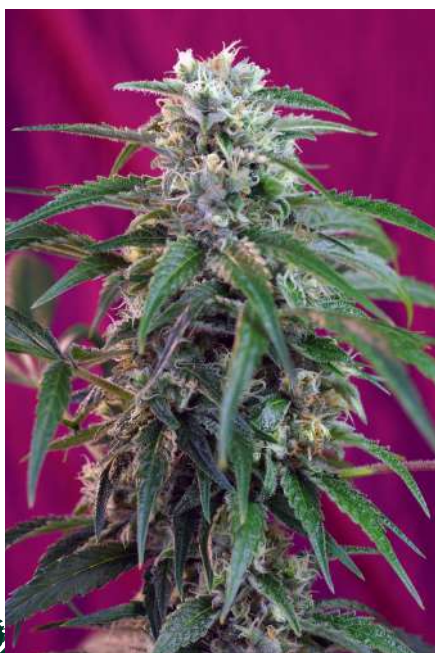
3+1s

24,00 €

5+2s

40,00 €

4<sup>th</sup> Generation autoflowering strain. Autoflowering version of one of the most famous strains from the West Coast of USA. Developed around the year of 1994 in Sunset Beach, South California, and named as Ocean Grow Kush but better known as OG Kush. Our Killer Kush Auto® (SWS56) is the result of the hybridization between a selected 3<sup>rd</sup> Generation autoflowering genetic line leaning to the indica side and an elite clone of OG Kush. The result is a very potent plant with very fast flowering. This strain produces large and aromatic buds, all covered with a thick layer of trichomes. The aroma is sweet, citric and acid with exotic tones reminiscent of aromas from the Chemdawg-Diesel family.



## Green Poison Auto®



**Variety SWS30**

**Indica:** 56,9% / **Sativa:** 40%

**Ruderalis:** 3,1%

**Indoor/Outdoor Harvest:**

8 weeks from germination

**Height:** 60-100 cm

3+1s

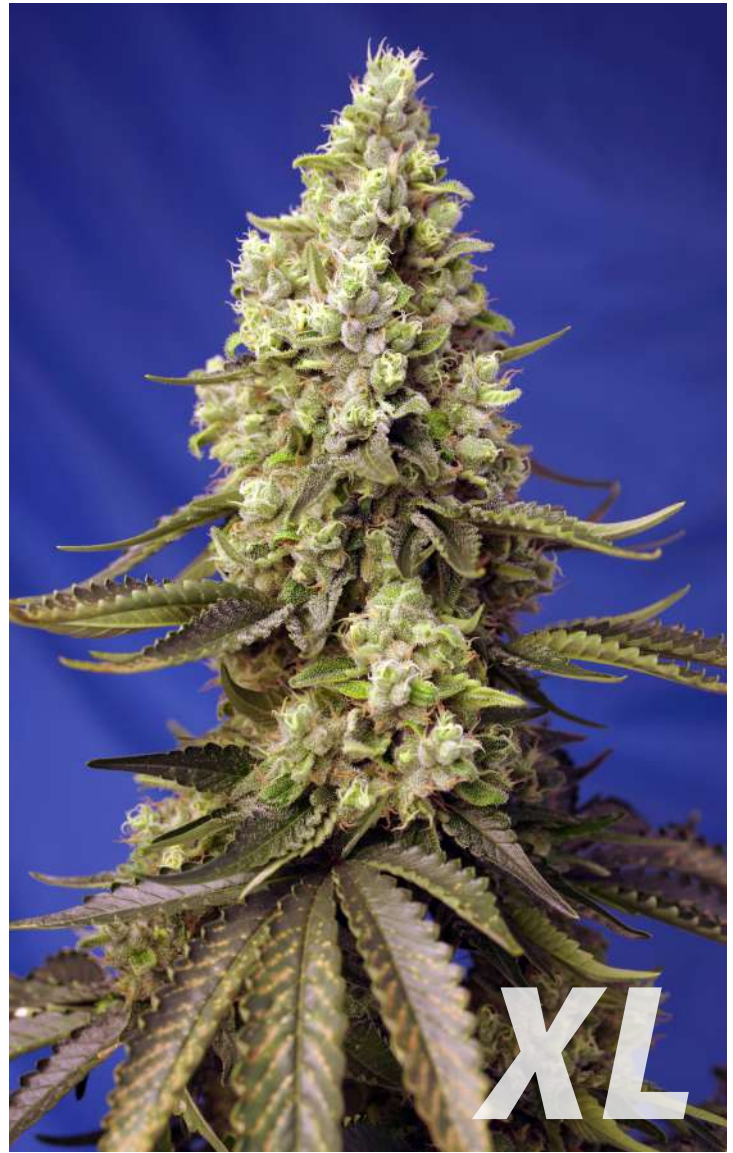
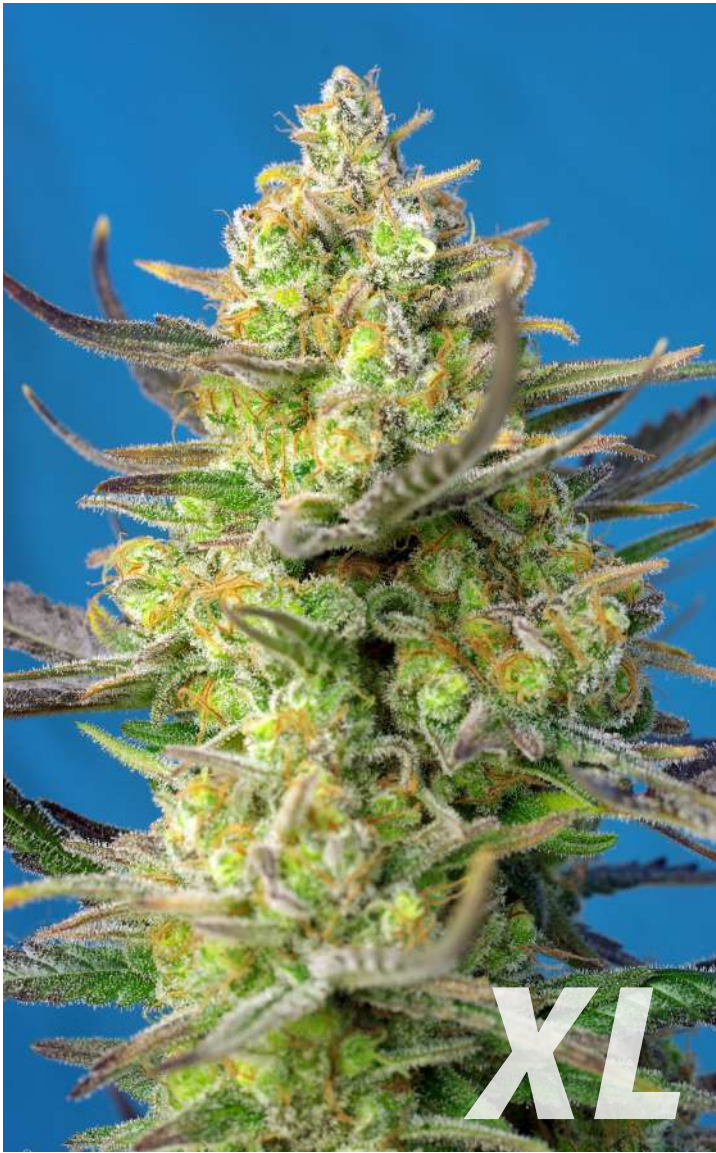
28,00 €

5+2s

46,00 €

3<sup>rd</sup> Generation autoflowering strain. This hybrid is the result of crossing a selected strain of Big Devil #2 Auto® (SWS20) and our Green Poison® (SWS14) elite clone. The resulting hybrid was backcrossed twice with the original Green Poison® clone in order to establish the Green Poison® aroma and taste. In this autoflowering strain the tastes and aromas are strongly set to a very pleasant and intense standard, with sweet fruity tones and a mild Skunk background. This strain features exceptional flower and resin production, providing a potent long-lasting effect.





## Sweet Cheese XL Auto®



Variety SWS77

**Indica:** 35,6% / **Sativa:** 61,3% / **Ruderalis:** 3,1%

**Indoor/Outdoor Harvest:** 8 weeks from germination

**Height:** 75-140 cm

3<sup>rd</sup> Generation autoflowering strain. Tall-stemmed version of our Sweet Cheese Auto® (SWS33). Sweet Cheese XL Auto® (SWS77) was developed through a recurrent selection program of tall-stemmed and high production specimens of Sweet Cheese Auto® along multiple generations. This genetic produces taller plants than its predecessor, with an equally higher production of flowers and resin. Preserves the intense and characteristic remarkably sweet Skunk aroma of Sweet Cheese® (SWS19), with tones of matured spicy cheese and a soft touch of lemon. This autoflowering option allows us to enjoy the excellent quality of Sweet Cheese® fruits in only 8 weeks after the germination of the seeds.

## Runtz XL Auto®



Variety SWS88

**Indica:** 47,1% / **Sativa:** 52,5% / **Ruderalis:** 0,4%

**Indoor/Outdoor Harvest:** 8 weeks from germination

**Height:** 60-120 cm

A 6<sup>th</sup> Generation autoflowering strain. This is our extra large, autoflowering version derived from the Runtz genetic line (Zkittlez x Gelato). The strain is notable for its delicious aroma, strong effects and high yields. The Runtz strain has revolutionized the Californian marijuana scene and it is one of the most aromatic and potent genotypes on the West Coast of the USA. Runtz XL Auto® is the product of crossing a carefully selected Runtz clone with handpicked individuals from our Sweet Gelato Auto® (SWS76) strain. It contains high terpene concentrations, which lends the buds their very intense, delightfully sweet and fruity bouquet. It has a short life cycle, with just 8 weeks from the appearance of the cotyledons until harvest. Its effect is powerful and well-balanced, producing peaceful, relaxing vibes, while stimulating creativity and the imagination.

3+1s 24,00 €

5+2s 40,00 €

3+1s 32,00 €

5+2s 53,00 €



# Sweet Mix Auto®

10 autoflowering and 100% feminized seeds at an extraordinary price!

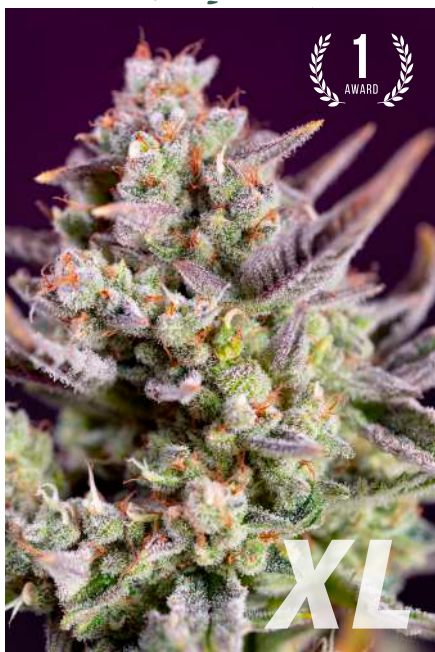
10 SEEDS

35€



The Sweet Mix Auto® pack contains a mix of 10 seeds chosen at random from all the feminized autoflowering varieties in the Sweet Seeds® catalog.

10 Feminized autoflowering seeds in a single tube.



## Sweet Zenzation XL Auto®



**Variety SWS100**

**Indica:** 63,6% / **Sativa:** 36,2%

**Ruderalis:** 0,2%

**Indoor/Outdoor Harvest:**

8 weeks from germination

**Height:** 60-120 cm

3+1s 32,00 € 5+2s 53,00 €

A 7<sup>th</sup> Generation autoflowering strain. Extra-large, autoflowering version of Zkittlez [(Grape Ape x Grapefruit) x unknown indica strain], one of the most celebrated, potent and aromatic strains from the US West Coast. Sweet Zenzation XL Auto® (SWS100) is a cross between a select, elite clone of Zkittlez and our very own Runtz XL Auto® (SWS88) [Runtz (Zkittlez x Gelato) x Sweet Gelato Auto® (SWS76)], which also contains Zkittlez genes. The resulting plants have a high concentration of terpenes and an intense, deliciously sweet, fruity aroma with floral and citric tones. This “Super Strong” strain produces compact buds with copious resin and high THC levels. The strain has a happy, calm and relaxing effect.



## Black Jack Auto®



**Variety SWS21**

**Indica:** 30% / **Sativa:** 66,9%

**Ruderalis:** 3,1%

**Indoor/Outdoor Harvest:**

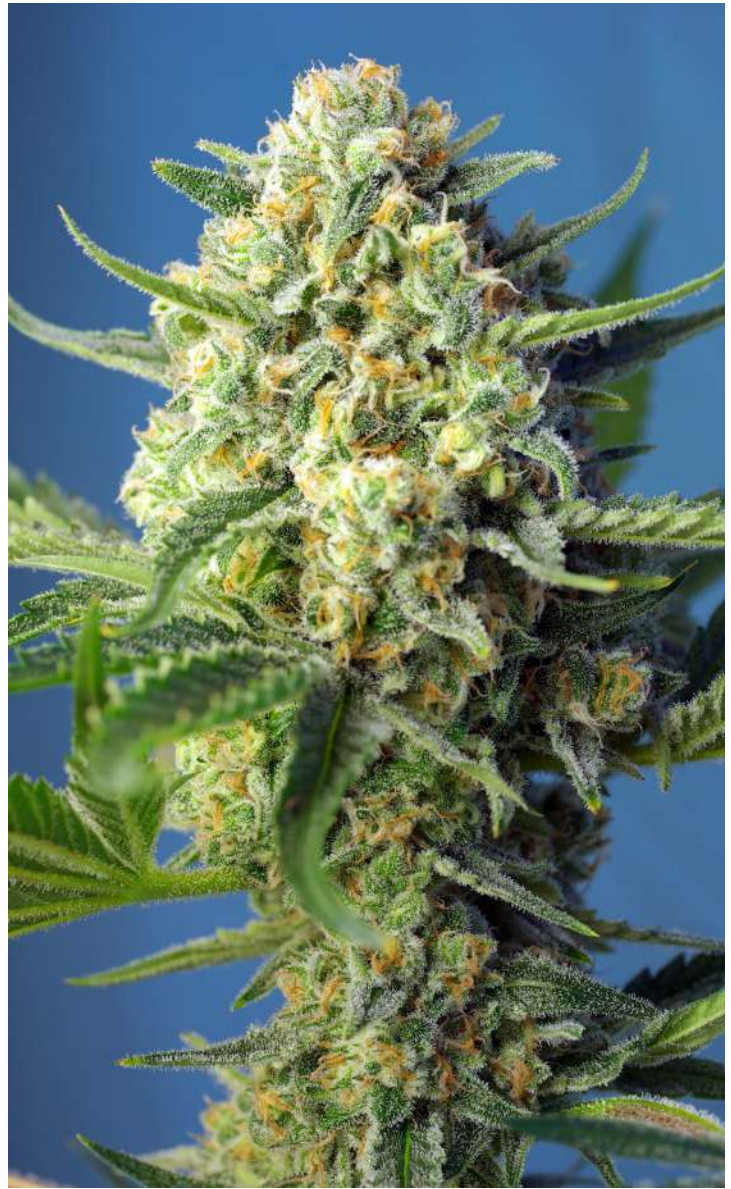
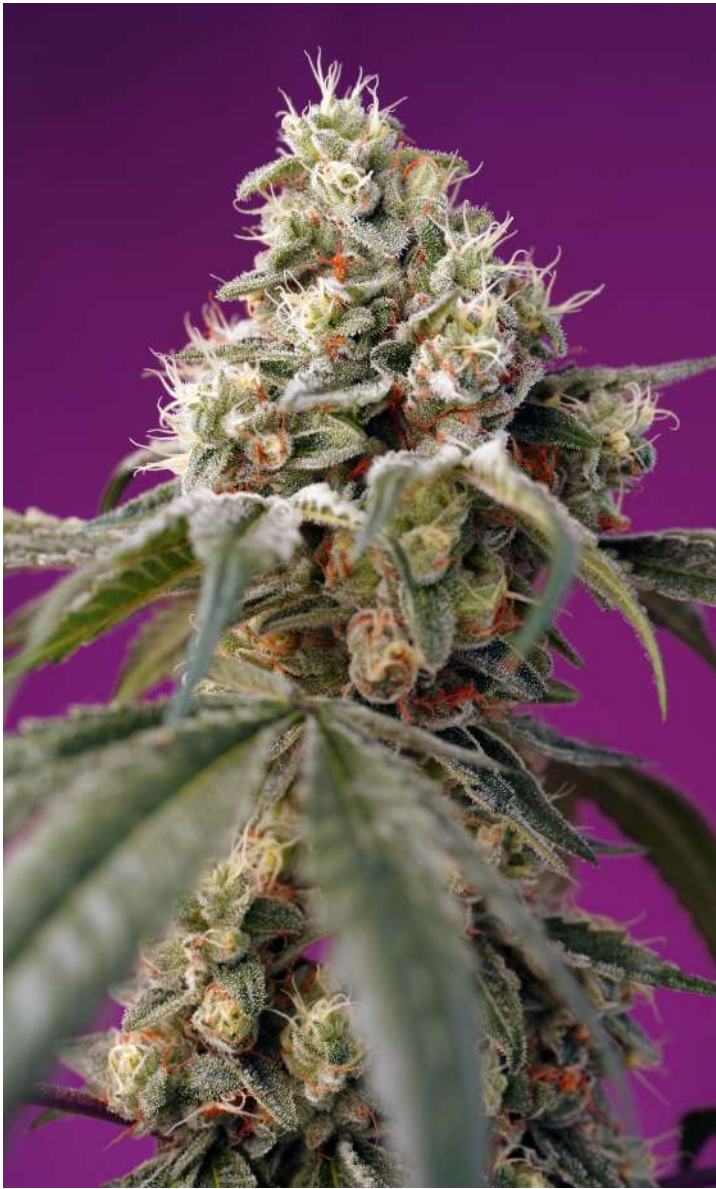
9 weeks from germination

**Height:** 40-110 cm

3+1s 28,00 € 5+2s 46,00 €

3<sup>rd</sup> Generation autoflowering strain. Autoflowering version of our Black Jack® (SWS01). This is the result of the cross between our 2<sup>nd</sup> Generation S.A.D. Sweet Afgani Delicious Auto® (SWS24) and our Jack Herer elite clone. This high-quality autoflowering strain features dense buds and outstanding resin production. Pungent sweet aroma with earthy tones. Fast flowering, strong effect and superb hybrid vigor.





## Bruce Banner Auto®



### Variety SWS91

**Indica:** 41,1% / **Sativa:** 58,7% / **Ruderalis:** 0,2%

**Indoor/Outdoor Harvest:** 9 weeks from germination

**Height:** 50-110 cm

A 7<sup>th</sup> Generation autoflowering strain. An autoflowering version of one of the most famous “Super Strong” strains from the US West Coast, the powerful and revolutionary Bruce Banner was developed in Colorado to delight cannabis lovers worldwide. Bruce Banner Auto® (SWS91) is an extremely aromatic autoflowering strain with high THC levels of up to 25% or even higher in some plants. These excellent seeds stem from a cross of an elite Bruce Banner clone with a select strain of our autoflowering Gorilla Girl XL Auto® (SWS82). The plants have a sweet aroma with fruity, floral notes reminiscent of the Diesel family, along with earthy tones. It has a potent, happy, even euphoric, and long-lasting effect that enhances the imagination and creativity.

## S.A.D. Sweet Afgani Delicious Auto®



### Variety SWS24

**Indica:** 86% / **Sativa:** 10,9% / **Ruderalis:** 3,1%

**Indoor/Outdoor Harvest:** 8 weeks from germination

**Height:** 40-90 cm

3<sup>rd</sup> Generation autoflowering strain. Autoflowering version of our S.A.D. Sweet Afgani Delicious S1® (SWS02). This is the result of the cross between our best 2<sup>nd</sup> Generation autoflowering strains and S.A.D. Sweet Afgani Delicious S1®. This high-quality autoflowering strain features dense buds and outstanding resin production. Pungent sweet aroma with earthy tones. Fast flowering, strong effect and superb hybrid vigor.

3+1s 30,00 €

5+2s 50,00 €

3+1s 20,00 €

5+2s 33,00 €



## Height

centimeters

## Harvest

weeks

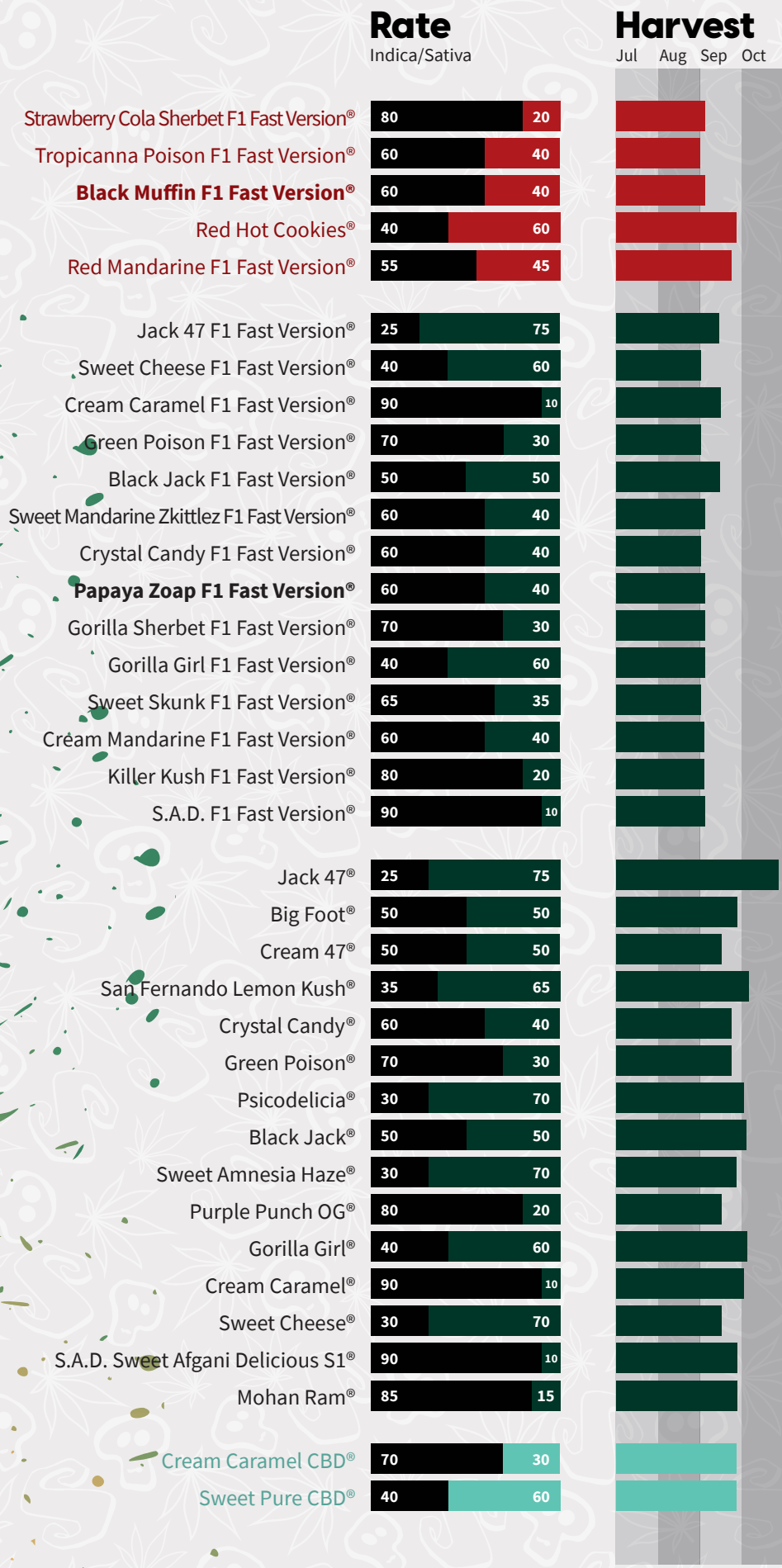
The Red Family

Autoflowering

Dark Devil Auto®	130	8½
Red Mimosa XL Auto®	130	8
Tropicanna Poison XL Auto®	120	8
Red Gorilla Girl XL Auto®	120	8-9
Red Strawberry Banana Auto®	110	8
Red Poison Auto®	120	8
Bloody Skunk Auto®	110	8
<b>Diablo Rojo XL Auto®</b>	120	8
Red Pure Auto CBD®	90	9
<b>Jealousy Z XL Auto®</b>	130	8
Orange Apricot Glue XL Auto®	135	8
Sweet Mandarin Zkittlez XL Auto®	135	8
Crystal Candy XL Auto®	140	8
Big Devil XL Auto®	160	9½
Cream Mandarin XL Auto®	150	9
Sweet Mimosa XL Auto®	130	9
Skywalker OG Runtz XL Auto®	120	8
Sweet Amnesia Haze XL Auto®	120	8-9
Sweet Cheese XL Auto®	140	8
Jack 47 XL Auto®	130	9
Green Poison XL Auto®	125	8
Mimosa Bruce Banner XL Auto®	130	8
Strawberry Banana Gelato XL Auto®	125	8
Sweet Zenzation XL Auto®	120	8
Runtz XL Auto®	120	8
Gorilla Girl XL Auto®	120	9
Cream Mandarin Auto®	110	9
Black Jack Auto®	110	9
Sweet Cheese Auto®	110	8
Green Poison Auto®	100	8
Killer Kush Auto®	100	8
<b>Papaya Zoap Auto®</b>	110	8
<b>Jet Fuel Mandarin XL Auto®</b>	135	9
Purple Punch OG XL Auto®	120	8
Bruce Banner Auto®	110	9
Sweet Gelato Auto®	100	8
Cream Caramel Auto®	90	8
S.A.D. Sweet Afgani Delicious Auto®	90	8
Sweet Skunk Auto®	90	7½
+Speed Auto®	90	7
Honey Peach Auto CBD®	100	8
Sweet Pure Auto CBD®	80	8

CBD





F1 Fast Version®

Photoperiod dependent

CBD

The values are set for optimal conditions from germination to harvest





## Ultra-fast flowering feminized seeds

F1 Fast Version® strains are photoperiod-dependent versions with an ultra-fast flowering of some of the most appreciated strains from the Sweet Seeds® catalog. These new genetics are F1 hybrids between elite clones of our photoperiod-dependent strains and our best selection of autoflowering strains. The autoflowering genetics contribute for a significant shortening in the flowering and maturation time frame of the F1 hybrid. This means that when grown indoors the plants are ready to be harvested only 6 or 7 weeks after changing the light cycle to 12 hours of light and 12 hours of darkness. In outdoor grows the plants shorten the harvest time in 1 or 2 weeks comparing with their original versions. Due to their fast flowering, these varieties are highly appropriate for humid

climates where plants usually get more vulnerable to mold, as they manage to anticipate harvest to the most virulent botrytis known for decimating the buds of longer flowering indicas.



**Early harvest**



**Resistant in humid areas**



**Great Hybrid vigor**



## Sweet Skunk F1 Fast Version®



**Variety SWS54**

**Indica:** 65% / **Sativa:** 35%

**Indoor Blooming:** 6-7 weeks

**Outdoor Harvest:**

late August to early September

Feminized and photoperiod-dependent version with an ultra-fast flowering of one of the most famous cannabis families of all time, considered nowadays as a classic of cannabis breeding. This strain is the result of the hybridization between a selected genetic line of our Sweet Skunk Auto® (SWS34) and our Early Skunk elite clone. The F1 hybrid resulting from the cross between the autoflowering and the photoperiod-dependent strains originates a photoperiod-dependent Skunk genetic that features very fast flowering. The aroma of this strain is very sweet and spicy, just like the classic aroma that we usually find within the Skunk family. This strain produces thick buds, loaded with abundant and aromatic resin.



3+1s 20,00 €    5+2s 33,00 €



NEW



## Papaya Zoap F1 Fast Version®

This is an ultra-fast flowering, photoperiod-dependent, feminized strain. It is a polyhybrid obtained by crossing four different high-quality strains with US genetics [Bruce Banner Auto® (SWS91) x Papaya] x (Zkittlez x Zoap). The result is an exceptional F1 Fast Version® strain – highly resinous, aromatic – a sensory delight that blends sweet aromas reminiscent of mango, papaya, and citrus with earthy, smoky, and spicy tones. As the strain is a balanced indica/sativa polyhybrid, the plants have a strong, highly branched structure that produces several buds on the side branches and a large central bud. The buds often acquire a purple hue by the end of flowering. Papaya Zoap F1 Fast Version® (SWS112) has a happy, relaxing effect that helps stimulate the imagination while also helping you concentrate on creative or routine tasks.



**Variety SWS112**

**Indica: 60% / Sativa: 40%**

**Indoor Blooming:**

7 weeks

**Outdoor Harvest:**

early September

3+1s

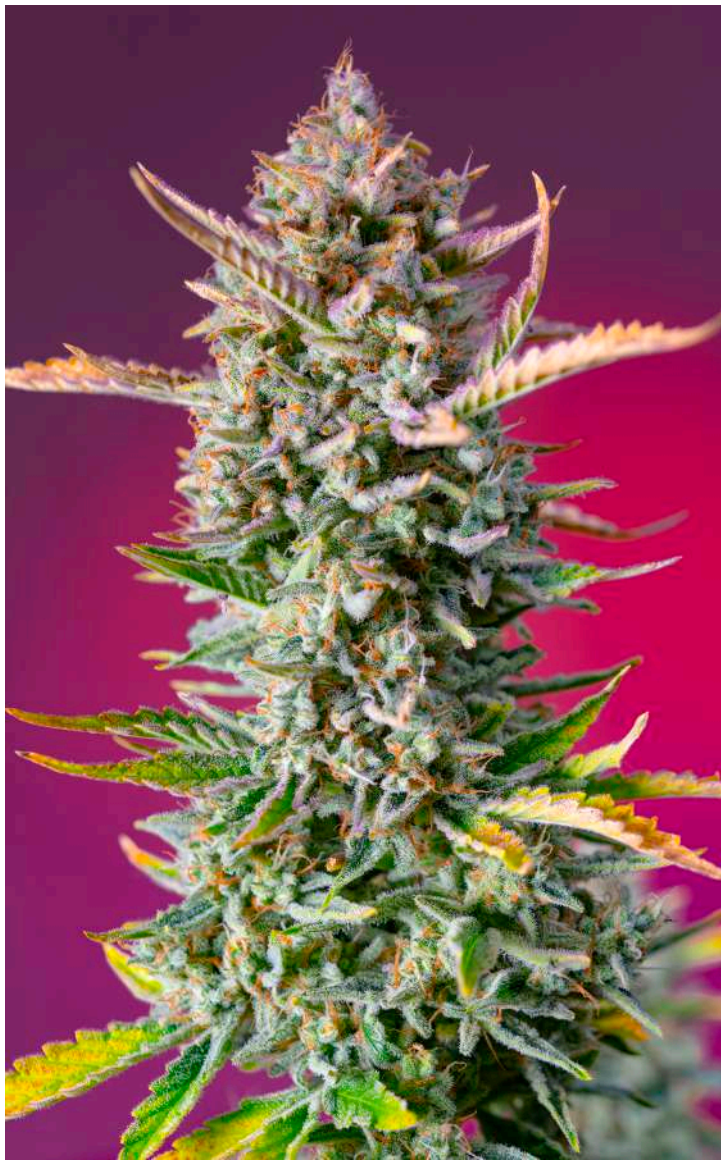
30,00 €

5+2s

50,00 €

F1 Fast Version® 35





## Gorilla Sherbet F1 Fast Version®



**Variety SWS98**

**Indica: 70% / Sativa: 30%**

**Indoor Blooming: 7 weeks**

**Outdoor Harvest: early September**

This is our feminized, photoperiod-dependent and ultra-fast flowering version of the famous US strain Sunset Sherbet (Girl Scout Cookies x Pink Panties) - one of the most prestigious members of the Cookies family and highly appreciated in medicinal and recreational cannabis dispensaries across the country for its capacity to alleviate the symptoms of stress and mood disorders. It is an F1 hybrid cross derived from an elite Sunset Sherbet clone and our autoflowering strain Gorilla Girl XL Auto® (SWS82) [Gorilla Girl® x Sweet Gelato Auto® (SWS74 x SWS76)]. Intense sweet, fruity aroma and flavour, with citric tones and shades of fresh humus, wood and a subtle backdrop of blue cypress.



## Crystal Candy F1 Fast Version®



**Variety SWS73**

**Indica: 60% / Sativa: 40%**

**Indoor Blooming: 6-7 weeks**

**Outdoor Harvest: late August to early September**

Fast flowering photoperiod-dependent version of one of the tastiest strains from the Sweet Seeds® catalog, Crystal Candy® (SWS58), awarded with the 1<sup>st</sup> Prize for the Best Indica at Spannabis Champions Cup 2017. Crystal Candy F1 Fast Version® (SWS73) is the resulting hybrid from the cross between our Crystal Candy® and a selected genetic line of Sweet Special Auto® (SWS35). This version features the curious and exquisite sweet aroma, reminiscent of strawberry chewing gum or candy shop, that turned the original Crystal Candy® into an extremely appreciated strain. This strain is a prominent high producer of big aromatic resin crystals that totally cover the flowers and their surrounding leaves with a high density of large big-headed trichomes. It is possible to obtain extractions of exquisite quality and incredibly pleasant aroma from the buds of this plant.

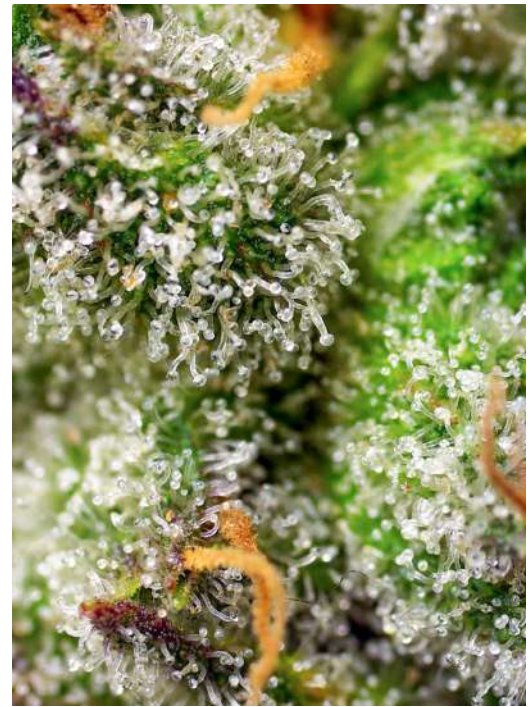
3+1s 30,00 €

5+2s 50,00 €

3+1s 24,00 €

5+2s 40,00 €





## Green Poison F1 Fast Version®

Feminized and photoperiod-dependent version of our Green Poison® (SWS14) now featuring ultra-fast flowering. This is an F1 hybrid resulting from the cross between the elite clone of our appreciated Green Poison® and a selected 3<sup>rd</sup> Generation autoflowering genetic line of Green Poison Auto® (SWS30). This strain is ready to harvest with thick buds all covered with abundant aromatic resin only 6 weeks after the flowering photoperiod begins. The plants have the appearance of indica-sativa hybrids, with an exceptionally vigorous growth, very fast flowering and large production of flowers. Exquisite taste and aroma with a sweet intense hint of fruit. This strain is remarkably resistant to mold in outdoor grows, considering that due to its fast flowering the plant succeeds in anticipating its harvest to the period in which botrytis usually attacks.



### Variety SWS41

**Indica:** 70% / **Sativa:** 30%

### Indoor Blooming:

6 weeks

### Outdoor Harvest:

late August to early September

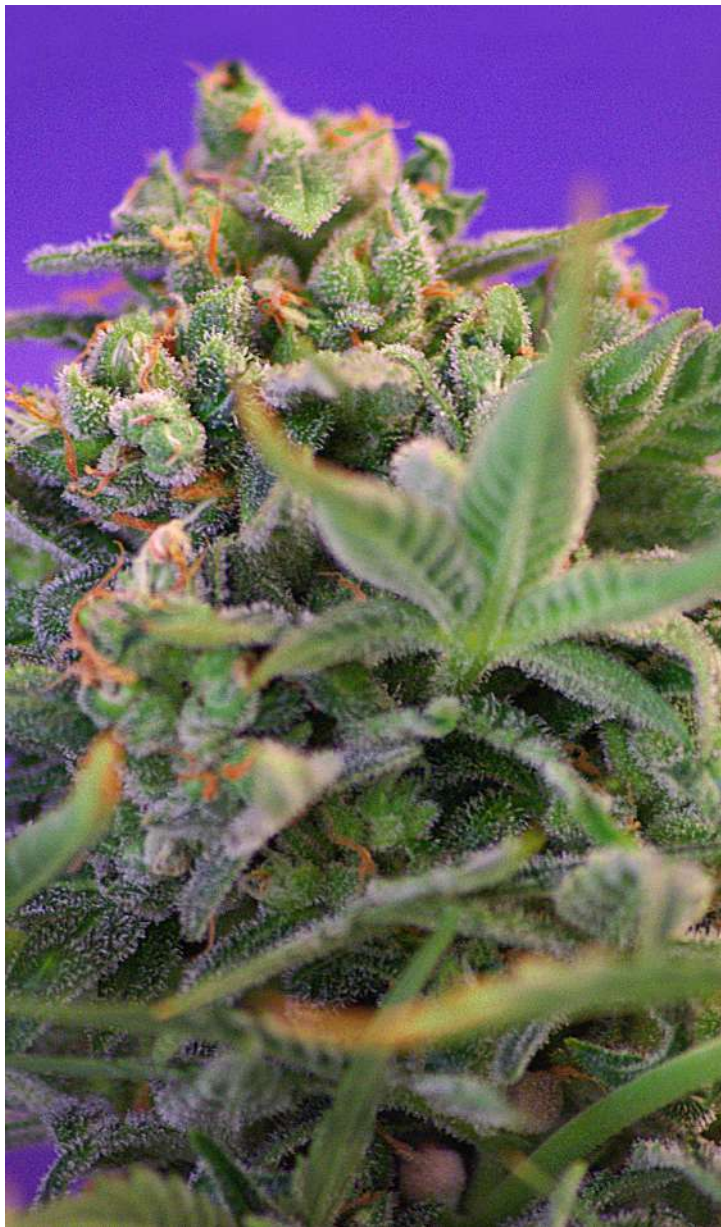
3+1s

28,00 €

5+2s

46,00 €





## Sweet Cheese F1 Fast Version®



**Variety SWS42**

**Indica:** 40% / **Sativa:** 60%

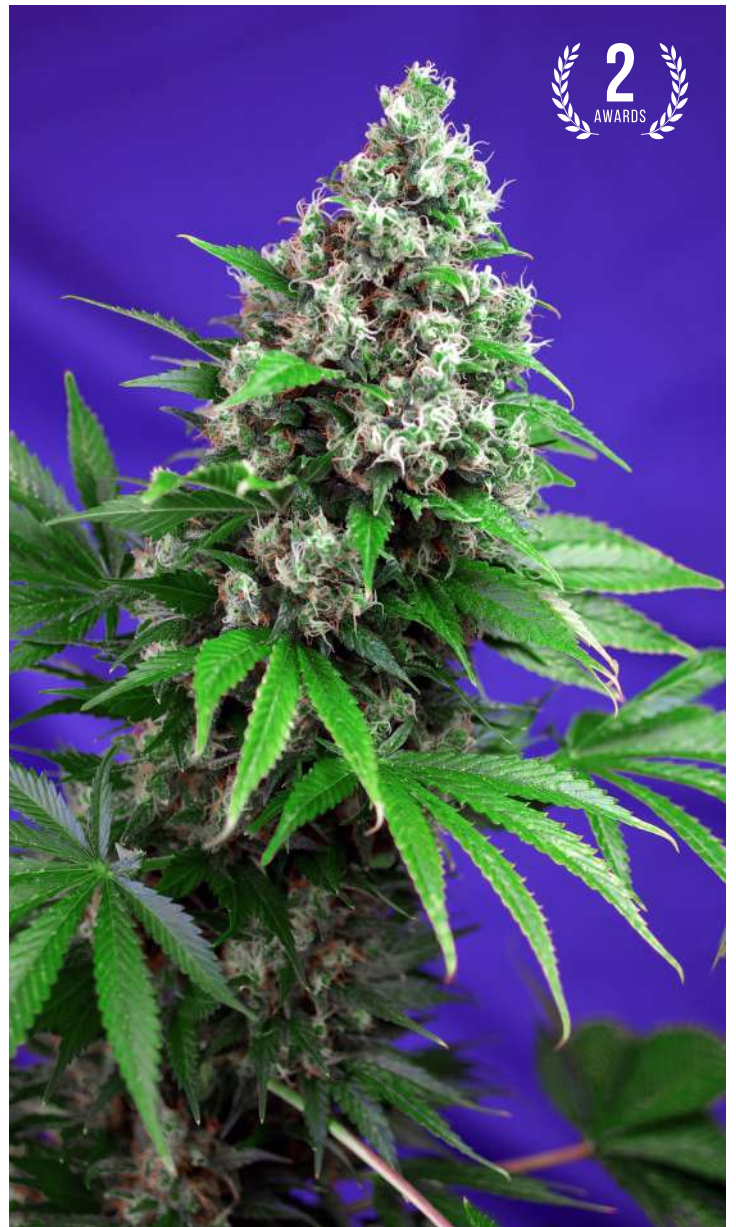
**Indoor Blooming:** 7-8 weeks

**Outdoor Harvest:** late August to early September

Feminized and photoperiod-dependent version of our Sweet Cheese® (SWS19) now featuring ultra-fast flowering. This strain is the F1 hybrid resulting from the cross between a selected Sweet Cheese® elite clone and a selected 3<sup>rd</sup> Generation autoflowering genetic line of Sweet Cheese Auto® (SWS33). This version of Sweet Cheese® preserves the traditional and desired matured spicy cheese aroma from the Cheese genetics. It produces long thick buds, which are quite dense and totally covered with very aromatic and crystalline trichomes. The F1 cross brings more homogeneity and hybrid vigor to the offspring. The cross with the autoflowering genetic shortens the flowering and maturity time of this strain in several weeks.

3+1s 20,00 €

5+2s 33,00 €



## Killer Kush F1 Fast Version®



**Variety SWS52**

**Indica:** 80% / **Sativa:** 20%

**Indoor Blooming:** 7 weeks

**Outdoor Harvest:** early September

Feminized and photoperiod-dependent version of one of the most famous strains from the West Coast of USA, developed around the year of 1994 in Sunset Beach, South California, the Ocean Grow Kush, better known as OG Kush. With an ultra-fast flowering, our Killer Kush F1 Fast Version® (SWS52) is the resulting hybrid from the cross between a selected 3<sup>rd</sup> Generation autoflowering genetic line leaning to the indica side and an elite clone of OG Kush. The result is an extremely potent plant with a very fast flowering. This strain produces large and aromatic buds, all covered with a thick layer of resin. The aroma is sweet, citric and acid with exotic tones reminiscent of aromas from the Chemdawg-Diesel family.

3+1s 24,00 €

5+2s 40,00 €





## Gorilla Girl F1 Fast Version®

This is a photoperiod-dependent, feminized and ultrafast flowering version of Gorilla Girl® (SWS74), the most potent “Super Strong” strain in the Sweet Seeds® catalog with THC levels of up to 31%. It is a cross between the potent Gorilla Girl® and our own Sweet Gelato Auto® (SWS76). The plants have a very strong and stimulating effect with a THC content as high as 25%, some plants may even exceed these levels. This strain is known for its exuberant resin production which completely coats the calyxes with aromatic trichomes. The buds have an intense, sweet and fruity aroma and taste, with tones of blue cypress and wood complemented by citric, earthy shades.



**Variety SWS86**

**Indica: 40% / Sativa: 60%**

**Indoor Blooming:**

7 weeks

**Outdoor Harvest:**

early September

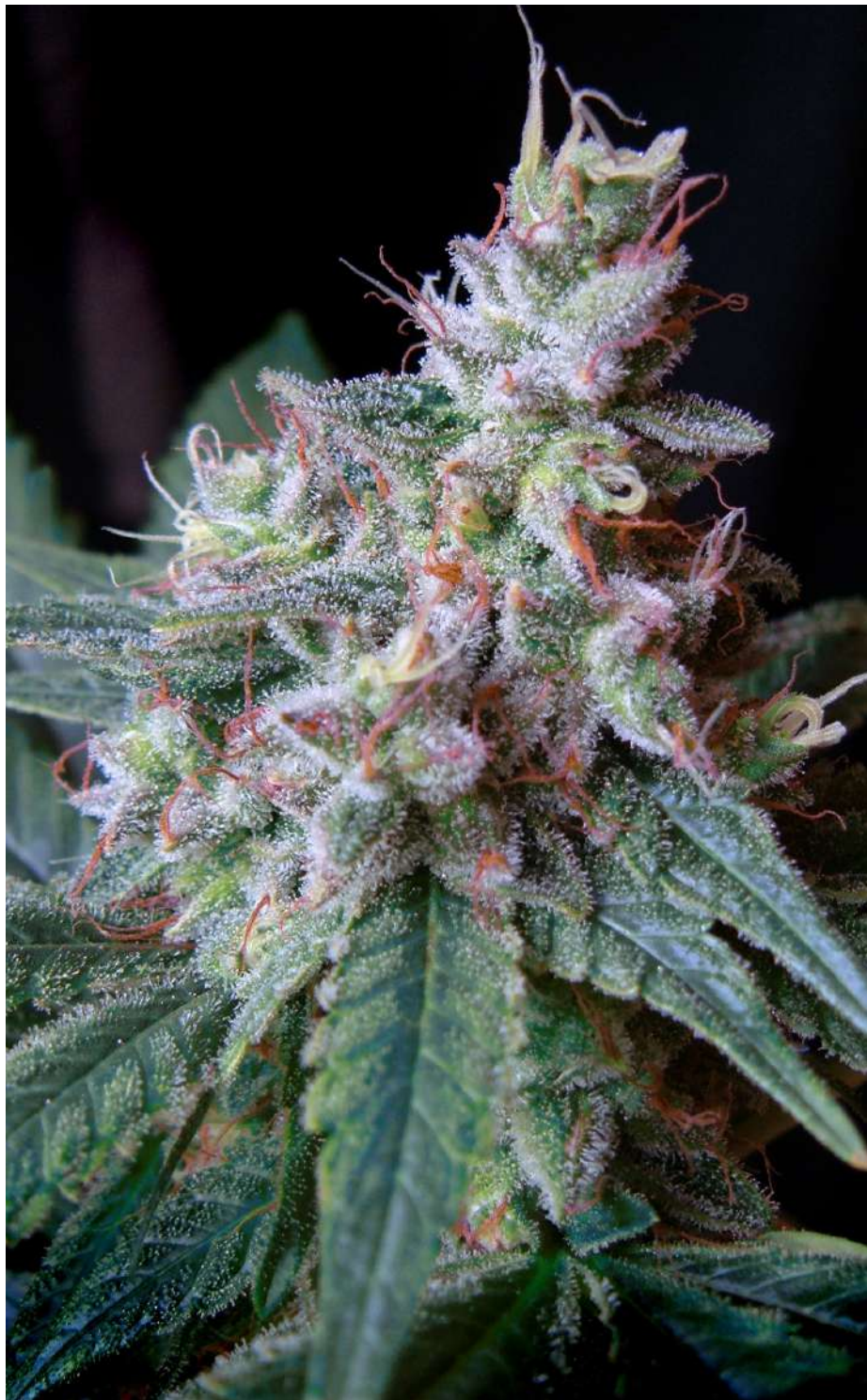
3+1s

32,00 €

5+2s

53,00 €





**Variety SWS40**

**Indica: 90% / Sativa: 10%**

**Indoor Blooming:**

7 weeks

**Outdoor Harvest:**

mid September

## Cream Caramel F1 Fast Version®

Feminized, photoperiod-dependent and ultra-fast flowering version of the most awarded strain from the Sweet Seeds® catalog, our Cream Caramel® (SWS04). This F1 hybrid is the result of the cross between an elite clone of our Cream Caramel® and a selected strain of our 3<sup>rd</sup> Generation autoflowering Cream Caramel Auto® (SWS22). Features strong hybrid vigor that turns up into mostly indica structure plants. Shows a great homogeneity in all the offspring. The aroma is very sweet resembling caramel, with earthy tones inherited from the Blue genetic used in the cross of the original Cream Caramel®. Variety featuring chemotypes with high THC levels and enough CBD to induce relaxing and antidepressant states.

3+1s

28,00 €

5+2s

46,00 €

**40 F1 Fast Version®**





## Sweet Mandarin Zkittlez F1 Fast Version®

This is an ultra-fast flowering, photoperiod-dependent, feminized strain. It is a first filial generation (F1) strain created by crossing an elite clone of Zkittlez (very potent, resinous and with a strong orange and mandarin citrus aroma akin to Sour Diesel) and our Sweet Mimosa XL Auto® (SWS94), which also emits a scent with hints of orange and mandarin. The result is a vigorous, photoperiod-dependent hybrid strain with very resinous, potent, and aromatic buds. This strain has a delicious aroma, with spicy shades of Sour Diesel, orange and mango, plus woody undertones and subtle hints of pine and freshly cut grass. Some plants develop flowers and leaves with purple and reddish hues at the end of the flowering period. Sweet Mandarin Zkittlez F1 Fast Version® (SWS105) has an energetic, cheerful effect that stimulates the imagination and creativity.



### Variety SWS105

**Indica:** 60% / **Sativa:** 40%

### Indoor Blooming:

7 weeks

### Outdoor Harvest:

early September

3+1s

30,00 €

5+2s

50,00 €





## Black Jack F1 Fast Version®



**Variety SWS49**

**Indica:** 50% / **Sativa:** 50%

**Indoor Blooming:** 7-8 weeks

**Outdoor Harvest:** mid September

Feminized and photoperiod-dependent version with an ultra-fast flowering of one of the first and most appreciated strains of our catalog, our Black Jack® (SWS01). This F1 hybrid is the result from the cross between a selected genetic line of S.A.D. Sweet Afgani Delicious Auto® (SWS24) and the Jack Herer elite clone used in the original Black Jack®. Just like the original version, this strain produces very potent and productive plants, with strong side branches that are very long and fully loaded with aromatic flowers. The aroma is very sweet, featuring hints of incense complemented by lemony citrus tones. This version shortens the flowering time by one week compared to the original version.



## Cream Mandarin F1 Fast Version®



**Variety SWS50**

**Indica:** 60% / **Sativa:** 40%

**Indoor Blooming:** 7 weeks

**Outdoor Harvest:** early September

Attending to the request of our friends and clients we introduce the feminized and photoperiod-dependent version of our much appreciated Cream Mandarin Auto® (SWS29). To develop this strain we selected our best Cream Mandarin Auto® genetic lines. To eradicate the autoflowering characteristic of the original version and, at the same time, to strengthen the aroma traits, we hybridized these selected genetic lines with an elite clone of Diesel ancestors featuring tones of aromatic mandarin orange. The plants show great vigor and the structure of an indica-sativa hybrid. This strain produces big compact buds fully loaded with aromatic resin.

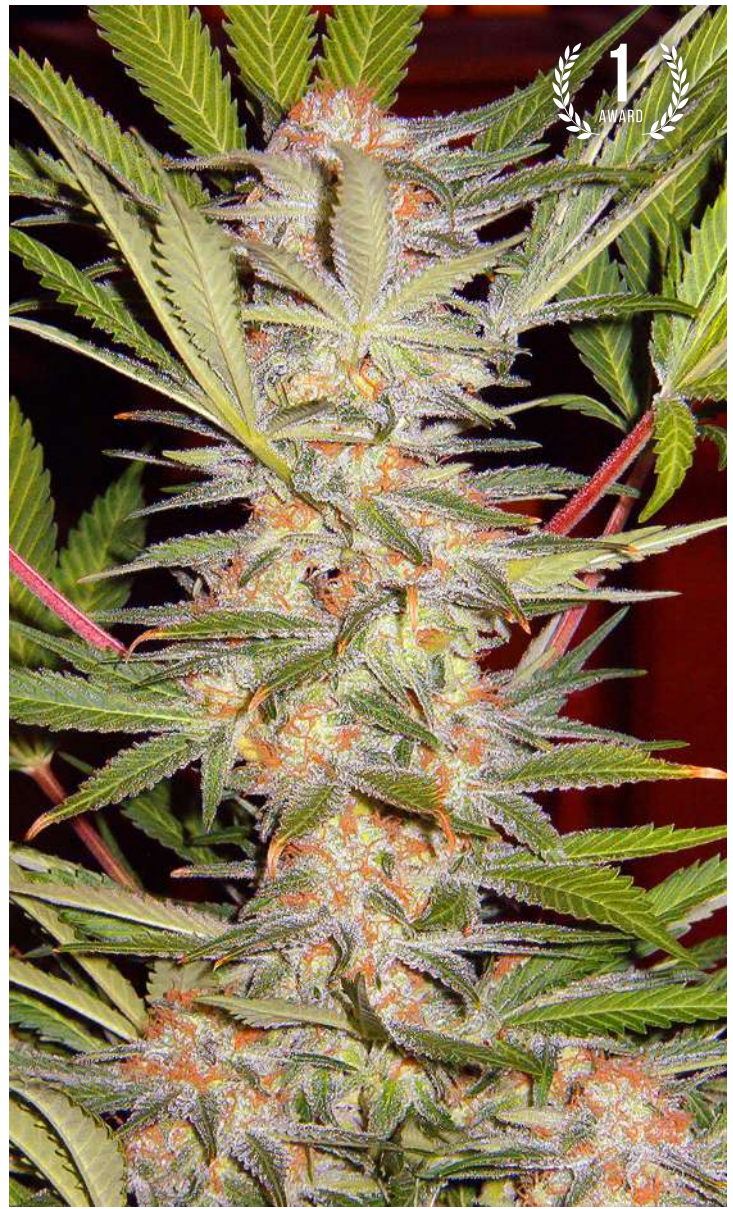
3+1s 24,00 €

5+2s 40,00 €

3+1s 28,00 €

5+2s 46,00 €





## Jack 47 F1 Fast Version®



**Variety SWS51**

**Indica:** 25% / **Sativa:** 75%

**Indoor Blooming:** 7-8 weeks

**Outdoor Harvest:** mid September

Feminized and photoperiod-dependent version with an ultra-fast flowering of one of the most potent strains of our catalog. This strain is the result of the cross between a selected genetic line of Jack 47 Auto® (SWS31) and an elite clone of our Jack 47® (SWS08). The cross between the autoflowering and the photoperiod-dependent strains originates a photoperiod-dependent genetic that shortens the flowering time by one week when compared with the original version of Jack 47®. This is a very powerful strain that produces exceptionally vigorous plants with thick buds that get fully covered in an abundant resin during flowering. The tastes and aromas of this strain are fresh and sweet, with tones of incense and flowers combined with lemony citrus hints.

## S.A.D. Sweet Afgani Delicious F1 Fast Version®



**Variety SWS53**

**Indica:** 90% / **Sativa:** 10%

**Indoor Blooming:** 6-7 weeks

**Outdoor Harvest:** early September

Feminized and photoperiod-dependent version with an ultra-fast flowering of one of the sweetest and most aromatic strains of our catalog. This genetic is the resulting hybrid from the cross between a selected genetic line of S.A.D. Sweet Afgani Delicious Auto® (SWS24) and a Black Domina elite clone selected in 1998. The cross between the autoflowering genetic and the photoperiod-dependent clone produces photoperiod-dependent F1 hybrids and shortens flowering time by one week. This is a strain with very dense buds and a big resin producer. The aroma of this strain is exquisite, very sweet and musky, typical of some Old School Afghan plants.

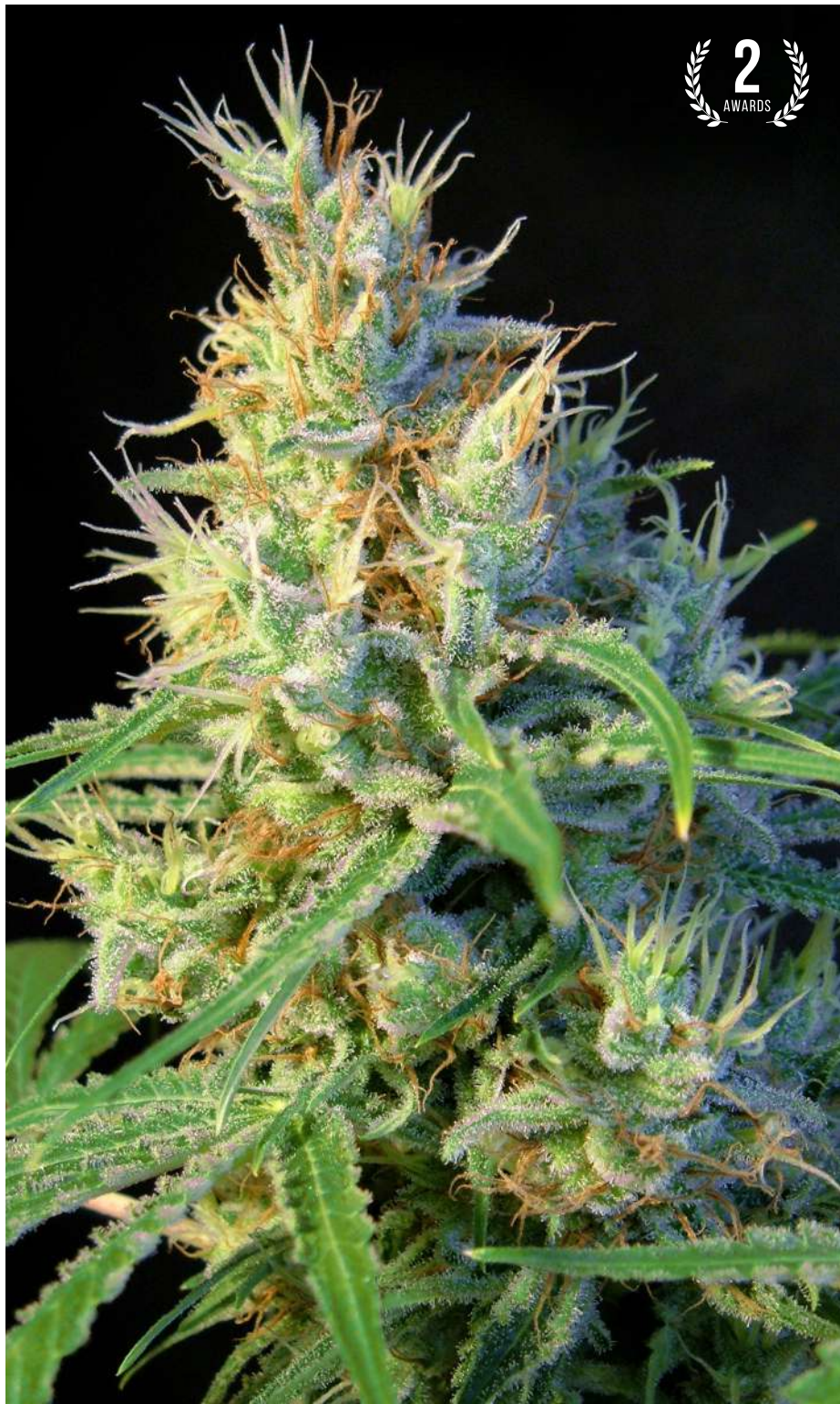
3+1s 36,00 €

5+2s 60,00 €

3+1s 24,00 €

5+2s 40,00 €





**Variety SWS07**

**Indica: 30% / Sativa: 70%**

**Indoor Blooming:**

8-9 weeks

**Outdoor Harvest:**

late September to early October

## Psicodelicia®

This strain is a cross between a clone from the United States and a plant from Nepal with spicy aromas reminiscent of coffee roasters. A mostly sativa plant with high production and very short flowering period, with big dense buds totally covered with sticky resin. In this strain we find fresh and citrus aromas with tones of lemon and spiced coffee coming from its Asian ancestors. Very stimulating effect typical of a mostly sativa hybrid: energetic, clean, creative and exciting. An ideal strain for artistic and imaginative tasks. Good choice for the cannabis grower who wants to fill his indoor with mostly sativa genetics with short flowering and high yielding plants.

3+1s

24,00 €

5+2s

40,00 €



21  
AWARDS



## Green Poison®

A mostly indica hybrid featuring very high yield. With this strain we sought for a fast and productive plant, with exquisite taste and aroma. One of the most awarded and appreciated plants of our catalog. Very fast and vigorous growth with a very fast and explosive flowering phase, this strain develops large buds becoming a super-producer of flowers in very few days. Strong and exciting effect that soon turns into creative serenity. This easy-to-grow plant features high flower and resin production. The aroma of this strain is very intense and sweet with a Skunk background and tones of walnut and arugula. Due to its fast flowering this plant is suitable for humid areas where mold and fungus usually attack.



### Variety SWS14

**Indica:** 70% / **Sativa:** 30%

### Indoor Blooming:

7 weeks

### Outdoor Harvest:

mid to late September

3+1s

28,00 €

5+2s

46,00 €

Photoperiod dependent 45





5 AWARDS

## Jack 47®



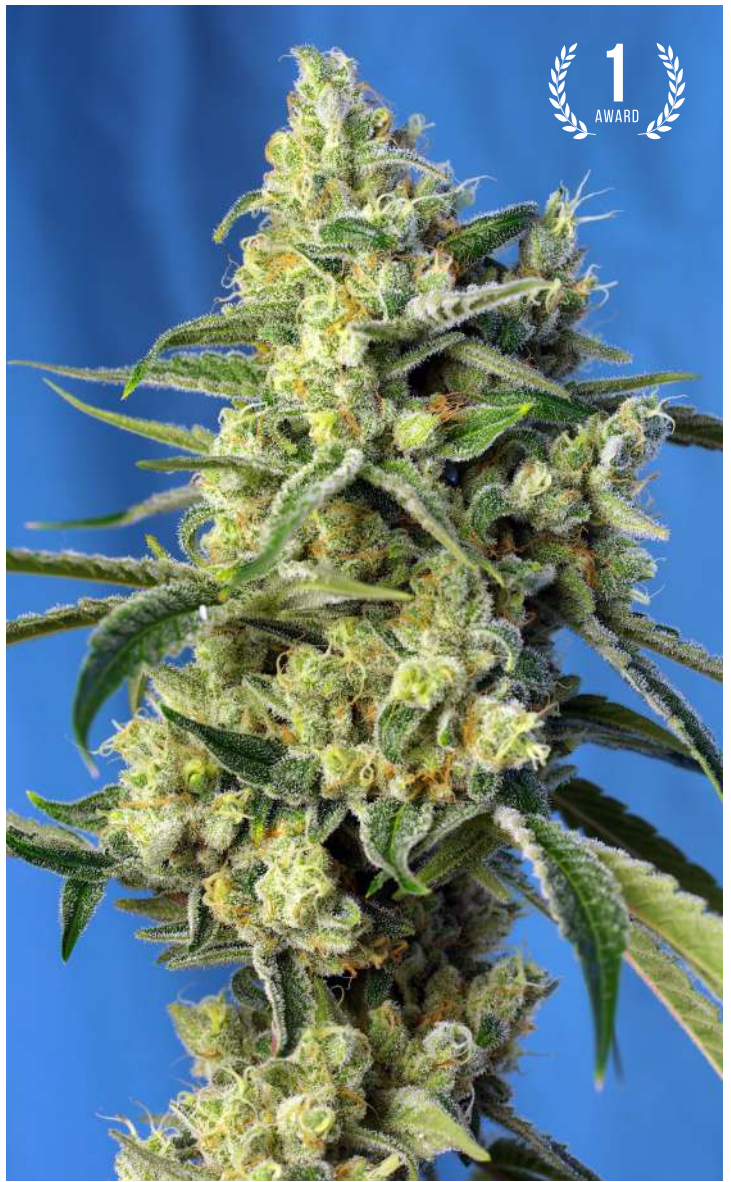
### Variety SWS08

**Indica:** 25% / **Sativa:** 75%

**Indoor Blooming:** 9½ weeks

**Outdoor Harvest:** late October

This super hybrid is the result of the cross between two of the most potent genetics of all time, Jack Herer x AK 47. Jack 47® (SWS08) is a very productive plant with strong effect that grows with an extraordinary vigor. This allows for big buds with copious amounts of resin. The tastes and aromas of this strain are sweet and fresh, complemented with a lemony hint and tones of incense. As a result of its genetic freshness and hybrid vigor, this plant adapts very well to every kind of growing techniques. Besides that, it allows for the production of strong and healthy clones that show roots in only 7 days.



1 AWARD

## Sweet Amnesia Haze®



### Variety SWS72

**Indica:** 30% / **Sativa:** 70%

**Indoor Blooming:** 9 weeks

**Outdoor Harvest:** late September

Cross between two Amnesia Haze “elite” clones of exceptional quality. The result is a mainly sativa genetic of excellent quality and fast flowering time. The Amnesia strain is one of the fastest plants within the famous Haze family. Sweet Amnesia Haze® (SWS72) has a very vigorous growth. With the shape of a christmas tree, the plants produce long side branches. It is a very high yielder for a sativa strain, producing compact and extremely resinous buds. As a very easy-to-grow strain, it is suitable for every kind of growers, from beginners to experienced. The tastes and aromas of this genetic are amazing and made it famous worldwide. It features a taste and aroma with lemon citrus tones, a complex incense background and hints of cedar wood.

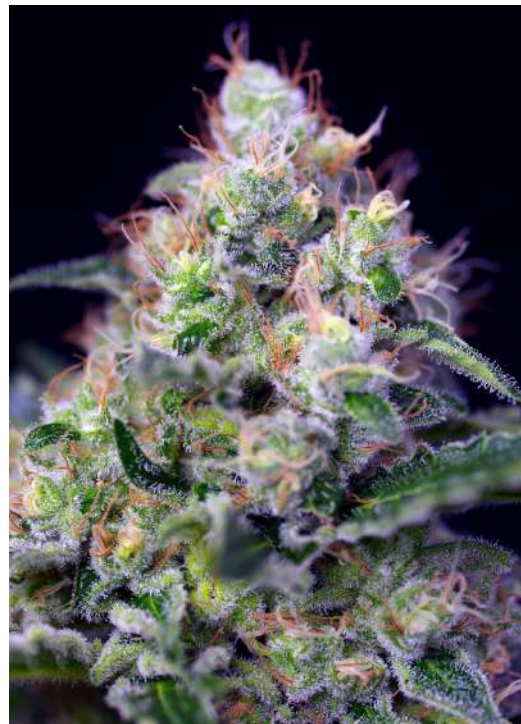
3+1s 36,00 €

5+2s 60,00 €

3+1s 28,00 €

5+2s 46,00 €





# Cream Caramel®

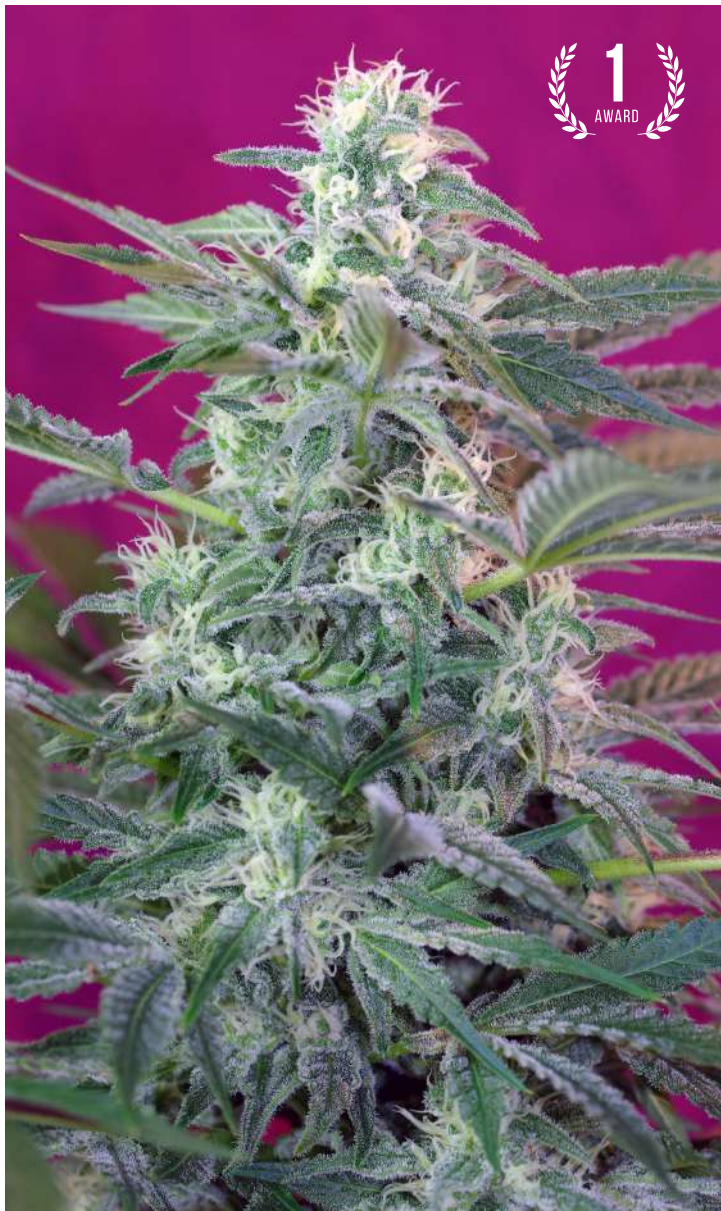
This synthetic strain is the result of a three way cross between our best indicas: Blue Black x Maple Leaf Indica x White Rhino. Famous in the world cannabic scene, this is the most awarded strain of our catalog. The tastes and aromas of this variety are very intense, sweet and caramelized like sweets, fruit of the indica molotov cocktail that contains in itself, combined with a hint of earthy flavors inherited from the Blue genetic involved in the cross. This strain is ideal for indoor growing and a super plant for outdoor growing. Its structure is typical of indica plants, featuring a strong main stem with short internodal distance, with a big main bud and multiple side branches. This strain is the favorite among our THC-rich strains for medicinal cannabis users. Relaxing and antidepressant.



**Variety SWS04**  
**Indica: 90% / Sativa: 10%**  
**Indoor Blooming:**  
8-9 weeks  
**Outdoor Harvest:**  
late September to early October

3+1s 28,00 € 5+2s 46,00 €





1  
AWARD

## Big Foot®



### Variety SWS36

**Indica:** 50% / **Sativa:** 50%

**Indoor Blooming:** 9 weeks

**Outdoor Harvest:** late September

This very potent plant featuring great abundance of pistils and massive resin production is one of the most outstanding varieties of the Sweet Seeds® catalog. It has an extraordinary aroma, great hybrid vigor and very fast flowering time. Big Foot® (SWS36) is an indica-sativa hybrid with strong main stem, large number of side branches and short internodal distance. This high yielding strain produces a big main bud and lots of secondary buds on the peripheral branches. The buds are compact and produce copious amounts of extremely aromatic resin. The aromas and tastes of this strain are very intense, dense, sweet and fruity with spicy undertones. The effect is quite potent and can range from euphoria to comfortable relaxation.



10  
AWARDS

## Black Jack®



### Variety SWS01

**Indica:** 50% / **Sativa:** 50%

**Indoor Blooming:** 9 weeks

**Outdoor Harvest:** early October

Crossbreed of our Black Domina'98 with an exceptional Jack Herer that features a pleasant and intense bouquet similar to the Haze's cathedral incense aromatic trait. The result is Black Jack® (SWS01), one of our most powerful and productive strains. This classic strain features great hybrid vigor and it is totally adapted to indoor grows. When planted outdoors, directly in the ground and with enough sunlight, it becomes a resinous hairy monster of about three meters of height.

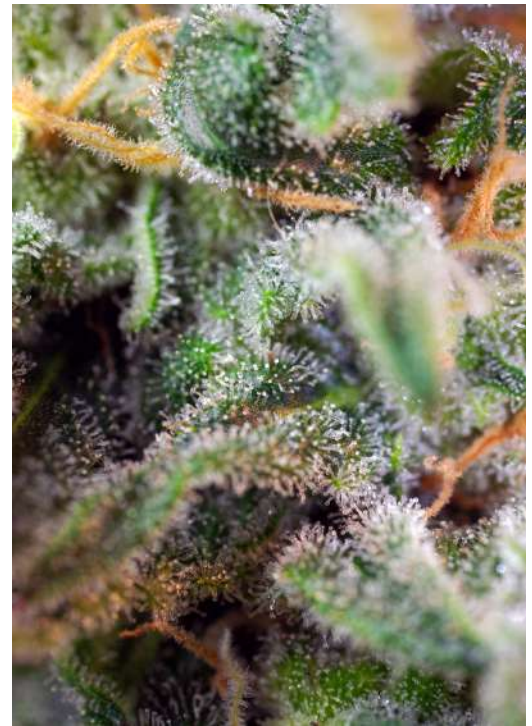
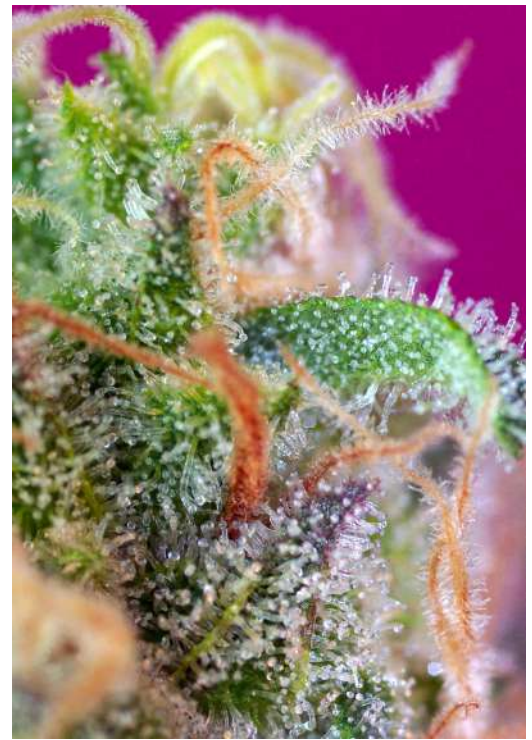
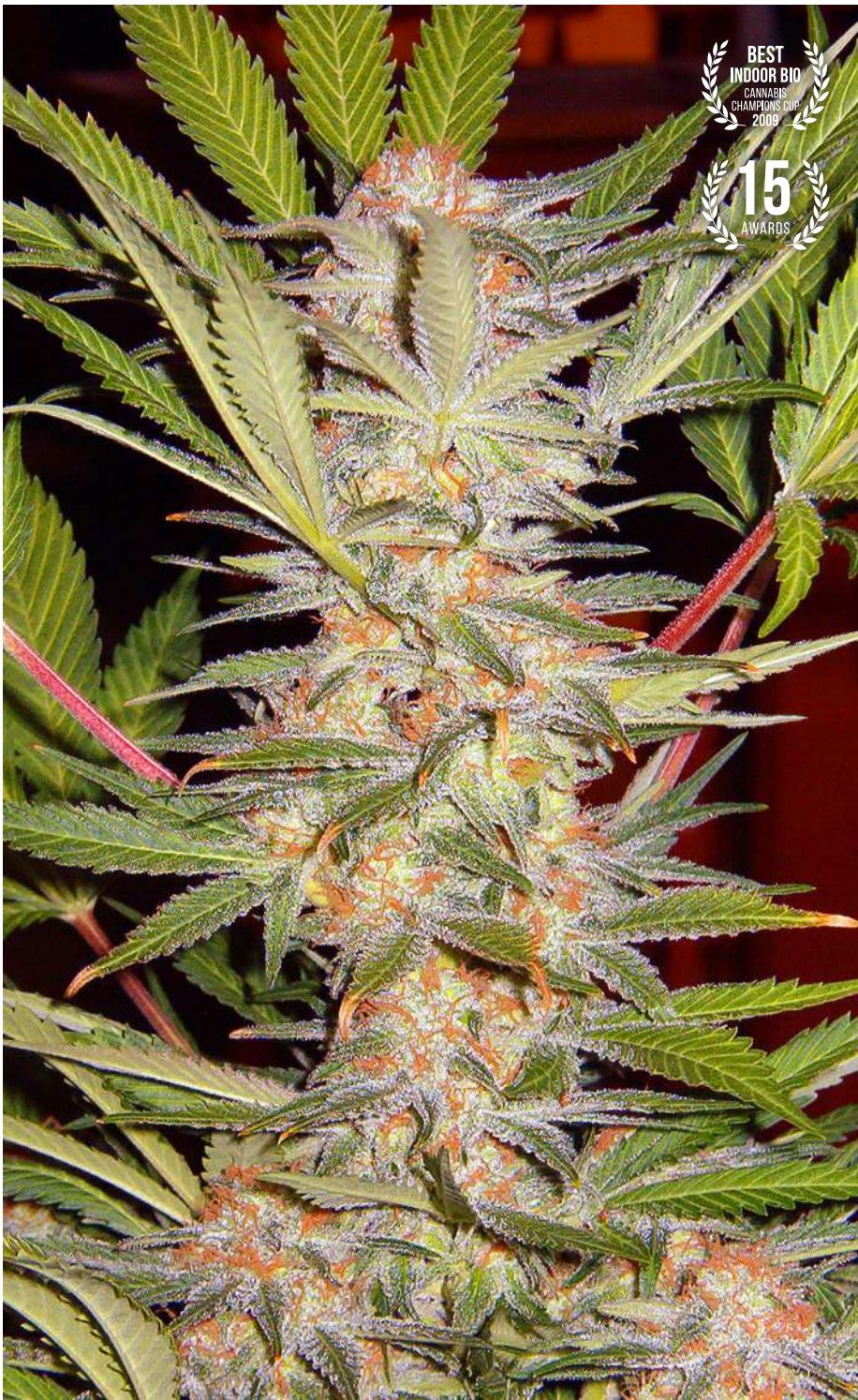
3+1s 30,00 €

5+2s 50,00 €

3+1s 24,00 €

5+2s 40,00 €





## S.A.D. Sweet Afgani Delicious S1®

Self-pollination of one of our most powerful and aromatic mothers, a Black Domina selected from seed in 1998, famous in the cannabis scene as Black Domina'98. One of the most awarded strains of our catalog. The self-pollination of this super mother produces plants with indica structure, short internodal distance, strong main stem and multiple side branches. Featuring fast flowering and high yield, the plants develop dense buds covered with abundant resin. This strain features sweet intense aroma and a musky flavor inherited from its Afghan ancestors. This S1 seed allows for a very homogeneous offspring regarding the described characteristics. Great plant for growing indoors being an all-rounder in outdoors. Easy to grow and very resistant to pests and fungus.



**Variety SWS02**

**Indica: 90% / Sativa: 10%**

**Indoor Blooming:**

8-9 weeks

**Outdoor Harvest:**

late September

3+1s

24,00 €

5+2s

40,00 €





## Purple Punch OG®



**Variety SWS93**

**Indica:** 80% / **Sativa:** 20%

**Indoor Blooming:** 8 weeks

**Outdoor Harvest:** mid September

This strain is hybrid produced from an elite Purple Punch (Larry OG x Grand Daddy Purple) clone with an elite clone of Star Killer (Skywalker OG Kush x Rare Dankness #2) - two champion genotypes of renowned prestige in the international cannabis scene. It is a mainly indica strain with a compact structure featuring a large main bud and strong side branches. The buds are thick and laden with masses of highly aromatic resin. They are characterized by very high terpene concentrations making them ideal for resin extractions. Given the strain's Grand Daddy Purple ancestry, some plants are notable for purple or reddish hues in their leaves and flowers. They have a deliciously sweet, complex aroma and flavour, with very spicy tones of OG Kush and shades of lemon. The plants produce an intense, relaxing effect.



## San Fernando Lemon Kush®



**Variety SWS62**

**Indica:** 35% / **Sativa:** 65%

**Indoor Blooming:** 9 weeks

**Outdoor Harvest:** early October

Excellent hybridization between two of our best elite clones coming from the USA. In the cross takes part a selected clone of San Fernando Valley OG Kush, characterized by a pleasant and complex scent, with strong presence of the lemony aroma coming from the Lemon Thai that takes part in the original OG Kush cross. The other elite clone that is involved in the cross is a Kosher Kush, another OG Kush genetic very appreciated in Los Angeles and nearby areas (California). Very pleasant and intense aroma with original lemony tones of OG Kush and hints of solvent, notes of spices, wood and blue cypress. The plants look like indica-sativa hybrids leaning to the sativa side. These American varieties with strong presence of the limonene terpene are highly appreciated in the USA for cannabis extractions.

3+1s 30,00 €

5+2s 50,00 €

3+1s 36,00 €

5+2s 60,00 €

**50 Photoperiod dependent**





## Gorilla Girl®

This strain is the resulting hybrid from the cross between two of the most famous and powerful genetics coming from the USA: Gorilla Glue X Girl Scout Cookies. The GSC specimen used for this cross comes from the phenotype known as "Thin Mint". An indica-sativa hybrid with sativa predominance. Gorilla Girl® (SWS74) is a strain with a very powerful effect, featuring very high THC levels that can reach to between 20% and 31% in optimum growing conditions. Some specimens can even exceed these levels. The resin production of this strain is copious, covering all the flower calyxes with aromatic trichomes. The buds are very resinous and compact. Gorilla Girl® features intense taste and aroma, with cypress tones and a touch of wood, complemented with hints of earth and citrus. The plants look like balanced indica-sativa hybrids, very productive and vigorous, with long and flexible side branches.



### Variety SWS74

**Indica:** 40% / **Sativa:** 60%

### Indoor Blooming:

9 weeks

### Outdoor Harvest:

early October

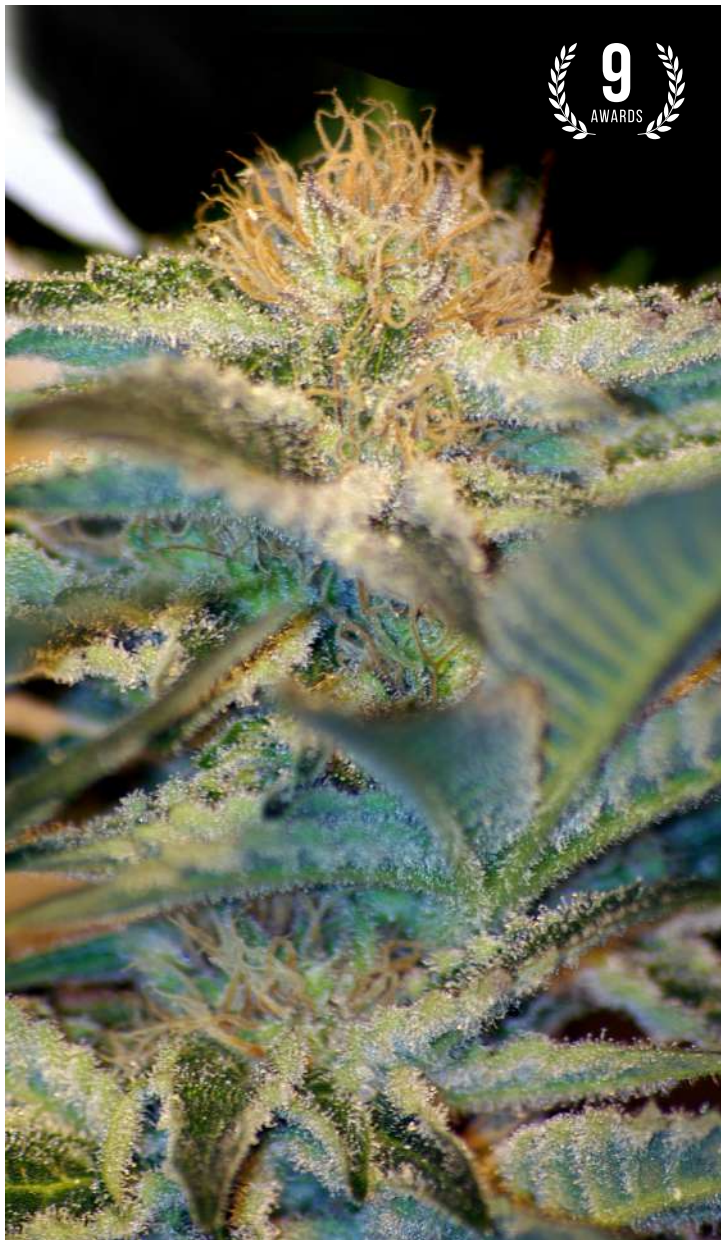
3+1s

36,00 €

5+2s

60,00 €





9  
AWARDS

## Mohan Ram®



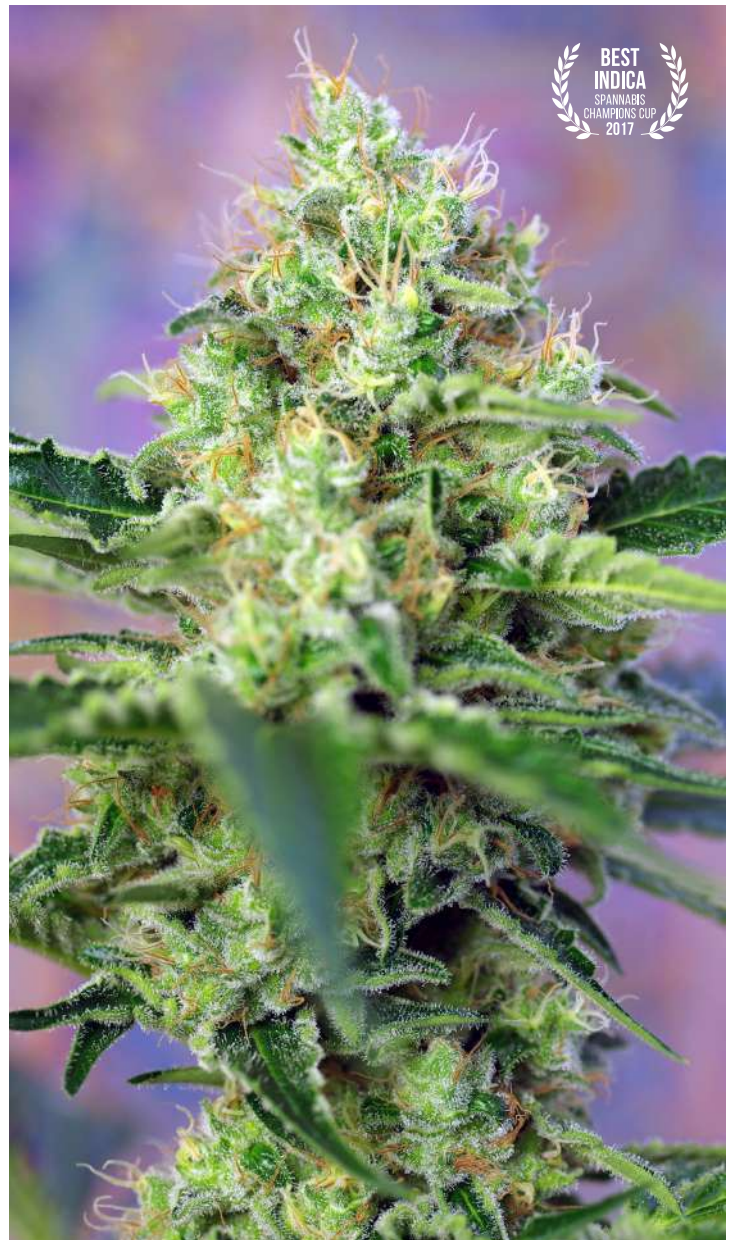
**Variety SWS09**

**Indica:** 85% / **Sativa:** 15%

**Indoor Blooming:** 8 weeks

**Outdoor Harvest:** late September

Hybridization between a White Widow elite clone and our sweet S.A.D. Sweet Afgani Delicious S1® (SWS02). The White Widow side provides a fresh, floral and fruity touch to the sweet musk of our S.A.D. Sweet Afgani Delicious S1®. The result is an ideal mostly indica plant with a spectacular production of resin. Mohan Ram® (SWS09) blooms very fast and features a strong long-lasting effect. It is also easy to grow and features an exquisite aroma.



BEST  
INDICA  
SPANNABIS  
CHAMPIONS CUP  
2017

## Crystal Candy®



**Variety SWS58**

**Indica:** 60% / **Sativa:** 40%

**Indoor Blooming:** 9 weeks

**Outdoor Harvest:** mid to late September

This strain was developed within a special program of the Sweet Seeds® R&D Department focused on the search for curious, exquisite and subtle sweet aromas that evoke aromatic sensations of candy shop. The aroma of this strain is sweet and fruity, with tones of chewing gum and fruit jellies, mixed with hints of acid strawberry and mature melon. This strain is a big producer of aromatic resin crystals that completely cover the flowers and their surrounding leaves with a very high density of long, large-headed trichomes. The plants look like indica-sativa polyhybrids, very vigorous and productive, with big buds and long side branches.

3+1s 24,00 €

5+2s 40,00 €

3+1s 24,00 €

5+2s 40,00 €





## Sweet Cheese®

A fusion between two high grade strains: Cheese x Black Jack® (SWS01). This genetic highlights the virtues of its ancestors bringing a new twist of aromas to the flavor of the Black Jack®. It produces long central buds surrounded by plenty of peripheral buds also long and with a good caliber. The high yielding, together with a new revolutionary flavor featuring hints of matured and spicy cheese makes Sweet Cheese® (SWS19) a recommended option for those who seek new flavors and aromas. Regarding the effects, it is important to remember that we are dealing with the mix of two of the best hitters in cannabis engineering. Strong and long-lasting effect, inducing euphoria and a nice feeling of relaxation.



**Variety SWS19**

**Indica: 30% / Sativa: 70%**

**Indoor Blooming:**

9 weeks

**Outdoor Harvest:**

mid September

3+1s

20,00 €

5+2s

33,00 €



# Sweet Mix Photoperiod-dependent®

*A little but excellent collection of 10 photoperiod-dependent and 100% feminized seeds at an excellent price!*



10 SEEDS  
**35€**

This pack contains a mix of 10 randomly chosen seeds among all photoperiod-dependent strains (not autoflowering) from the Sweet Seeds® catalog.

10 Feminized photoperiod-dependent seeds in a single tube.

## Cream 47®



**Variety SWS26**

**Indica: 50% / Sativa: 50%**

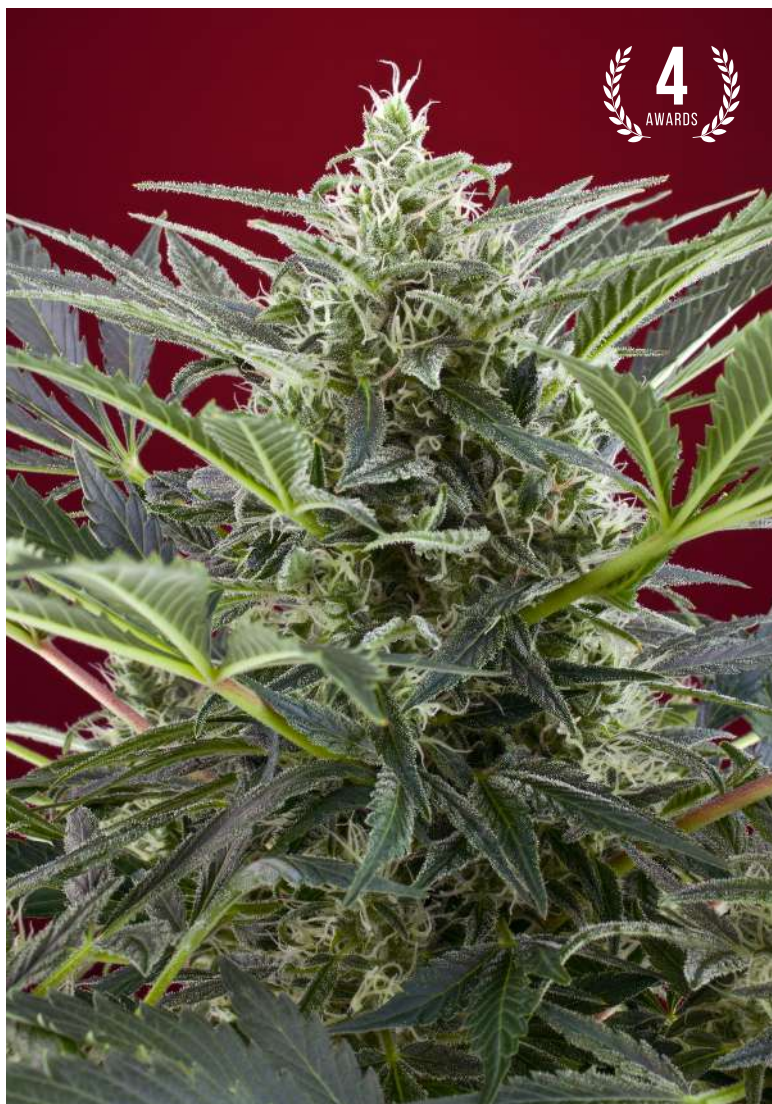
**Indoor Blooming:**

8 weeks

**Outdoor Harvest:**

mid September

Exceptional hybridization of our Cream Caramel® (SWS04) with our elite clone of AK 47. The result of this cross is a very powerful plant, productive and aromatic. Quite vigorous plant, it produces strong thick stems and branches. It develops large, dense buds, loaded with plenty of resin. During flowering some plants can acquire blue, purple and reddish colors. The yield at the end of the flowering period is very high. The flavors and aromas of this strain are extra sweet and preserves the so much appreciated earthy and humus background, original of our Cream Caramel®. The effect of this plant is very potent and at the same time very well-balanced, between relaxation and excitement, typical of indica-sativa hybrids.



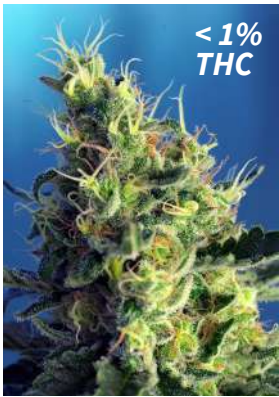
3+1s 32,00 €

5+2s 53,00 €





Our seeds with high CBD (also known as CBD Rich) are autoflowering and photoperiod-dependent seeds fully adapted to the requirements of both outdoor and indoor grows with artificial lights. This type of CBD-Rich genetics are appropriate for the treatment of multiple illnesses due to the many therapeutic and medicinal properties of CBD and THC. Among other medicinal uses, CBD has been used to relieve anxiety, seizures, vomiting and nausea, inflammation, pain, and a long list of other pathologies.



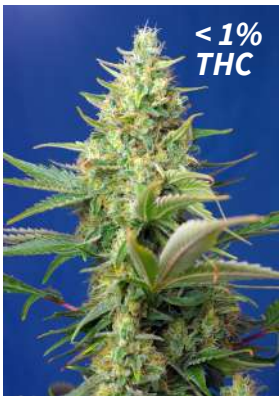
## Sweet Pure CBD®



**Variety SWS65**  
**Indica:** 40% / **Sativa:** 60%  
**THC:CBD Ratio:** (1:15-1:20)  
**Indoor Blooming:**  
 9 weeks  
**Outdoor Harvest:**  
 late September

The first "CBD-pure" cannabis strain from Sweet Seeds®, with very low levels of THC, generally under 1%, and high levels of cannabidiol (CBD), specially designed to satisfy the needs of therapeutic cannabis users who prefer to avoid the psychoactive effects of THC. Sweet Pure CBD® (SWS65) features a THC:CBD ratio of between 1:15 and 1:20, with levels of THC standing between 0,4% and 1% and CBD levels of around 8-15%. Such low levels of THC and high CBD turn our Sweet Pure CBD® into a cannabis plant with imperceptible psychotropic effects. With these high levels of CBD, therapeutic cannabis users can get an extra benefit from the medicinal properties of CBD. This strain is the result of two generations of autopollination (S2) of a CBD-rich clone with ancestors from the Diesel family. The aroma of this strain is sweet and fruity, with mandarin citrus tones and soft fresh hints of cypress. The plants present indica-sativa hybrid structure with sativa predominance.

3+1s 30,00 € 5+2s 50,00 €



## Sweet Pure Auto CBD®



**Variety SWS75**  
**Ind.:** 55% / **Sat.:** 44,6% / **Rud.:** 0,4%  
**THC:CBD Ratio:** (1:15-1:23)  
**Indoor/Outdoor Harvest:**  
 8 weeks from germination  
**Height:** 50-80 cm

6<sup>th</sup> Generation autoflowering strain. Our first "CBD pure" cannabis autoflowering strain, with very low THC levels of under 1%, between 0,4-0,9%, and high levels of cannabidiol (CBD) of around 8-20%. The THC:CBD ratio stands between 1:15 and 1:23. Specially designed to satisfy the needs of therapeutic cannabis users who prefer to avoid the psychoactive effects of THC. Sweet Pure Auto CBD® (SWS75) is the result of the hybridization and subsequent selection of CBD-rich and THC-poor specimens, between Sweet Pure CBD® (SWS65) and our CBD-rich autoflowering strain Honey Peach Auto CBD® (SWS64). The aromas of this strain are sweet and fruity with citrus tones and a touch of cypress.

3+1s 28,00 € 5+2s 46,00 €



## Honey Peach Auto CBD®



**Variety SWS64**  
**Ind.:** 70% / **Sat.:** 29,2% / **Rud.:** 0,8%  
**THC:CBD Ratio:** (1:1-1:1,5)  
**Indoor/Outdoor Harvest:**  
 8 weeks from germination  
**Height:** 60-100 cm

5<sup>th</sup> Generation autoflowering strain featuring high levels of cannabidiol (CBD). This strain is the result of the cross between a selection of our best autoflowering strains with sweet and fruity aromas and a photoperiod dependent clone rich in CBD. The THC:CBD ratio of this CBD-rich strain stands between 1:1 and 1:1,5. CBD-rich autoflowering strain with exceptional organoleptic qualities (taste and aroma). Sweet and fruity scents, with peach tones, complemented with a touch of lemon and cypress. The flowering time of this strain is very short, and the plants are ready to harvest only 8 weeks after the germination of the seeds. The plants produce hard and compact buds with abundant resin. This strain shows a mainly indica structure with long and resistant side branches that emerge out of a strong stem.

3+1s 28,00 € 5+2s 46,00 €



## Cream Caramel CBD®



**Variety SWS67**  
**Indica:** 70% / **Sativa:** 30%  
**THC:CBD Ratio:** (1:1-1:2)  
**Indoor Blooming:**  
 8 weeks  
**Outdoor Harvest:**  
 late September

CBD-rich version of one of the most appreciated strains from the Sweet Seeds® catalog, our Cream Caramel® (SWS04). Cream Caramel CBD® (SWS67) is the result of the cross between our Cream Caramel® and a selected CBD-rich clone from Diesel ancestors. The THC:CBD ratio of Cream Caramel CBD® stands between 1:1 and 1:2, making it a strain rich in CBD (cannabidiol). This strain presents a mostly indica plant structure with a big main cola and generous development of side branches, showing a strong main stem and large secondary branches. The tastes and aromas of this strain are sweet as candies, with a background of earthy tones and fresh hints of cypress and citrus.

3+1s 28,00 € 5+2s 46,00 €





## **OUR STRAINS THE MOST AWARDED OF SPAIN**

Experts are sure. Sweet Seeds® varieties are rewarded every year by cannabis growers, customers, enterprises and cannabis clubs



**We are proud to thank all customers and companies who participate with our varieties in contests**

**Top 15 Worlds Best Strains - Dolce Vita Online - Green Poison F1 Fast Version® - 2019**

**Ed Rosenthal's Top 19 Worlds Best Indicas - Cream Mandarin Auto® - 2019**

**Top 10 Strains - High Times Magazine - Ice Cool CBD® - 2019**

**2<sup>nd</sup> Prize - Best CBD - Spannabis Champions Cup - Chem Beyond Diesel® - 2018**

**3<sup>rd</sup> Prize - Best CBD - Spannabis Champions Cup - Honey Peach Auto CBD® - 2018**

**1<sup>st</sup> Prize - Best Indica - Spannabis Champions Cup - Crystal Candy® - 2017**

**1<sup>st</sup> Prize - Best Sativa - VI Copa Cannábica Expogrow - San Fernando Lemon Kush® - 2017**

**3<sup>rd</sup> Prize - Best Indica - VI Copa Cannábica Expogrow - Killer Kush F1 Fast Version® - 2017**

**2<sup>nd</sup> Prize - Best Autoflowering Genetic - VI Copa Cannábica Expogrow - Cream Caramel Auto® - 2017**

**2<sup>nd</sup> Prize - Autoflowering - IV Copa Cannábica Expogrow - Ice Cool Auto® - 2015**

**2<sup>nd</sup> Prize - Outdoor - Cannabis Champions Cup - Sweet Trainwreck Auto® - 2015**

**1<sup>st</sup> Prize - "Auto of the Year" - Soft Secrets - Big Devil® Family - 2014**

**1<sup>st</sup> Prize - Autoflowering - III Copa Cannábica Expogrow - Big Devil XL Auto® - 2014**

**2<sup>nd</sup> Prize - Autoflowering - III Copa Cannábica Expogrow - Bloody Skunk Auto® - 2014**

**1<sup>st</sup> Prize - "Girl of the Year" - Soft Secrets - Cream Caramel® - 2011**

**1<sup>st</sup> Prize - Outdoor - Cannabis Champions Cup - Cream Caramel® - 2009**

**1<sup>st</sup> Prize - Interior Bio - Cannabis Champions Cup - S.A.D. Sweet Afgani Delicious S1® - 2009**

**Best Seed Bank - THC Expo 2022**

**Best Seed Bank - Spannabis Sur 2013**

**Best Seed Bank - Spannabis 2008**

**Best Seed Bank - Expocannabis 2007**



# OTHER AWARDS

2024 - 1<sup>st</sup> P - The Most Popular Choice for Indoor Growers - Semyanich - Russia - +Speed Auto®  
2024 - 1<sup>st</sup> P - Best Autoflowering Strain - IV Autoflower World Cup - Barcelona - Diablo Rojo XL Auto®  
2023 - 1<sup>st</sup> P - Outdoor Sativa - VI Copa Farallones - Santiago de Cali - Colombia - Psicodelicia®  
2023 - 1<sup>st</sup> P - Best Strain 2023 - 2º The Grow Diaries Awards (POTY) - Barcelona - Sweet Zenzation XL Auto®  
2023 - 1<sup>st</sup> P - Sativa - III Autoflower World Cup - Barcelona - Sweet Gelato Auto®  
2022 - 3<sup>rd</sup> P - Solvent Extractions - II Copa Seshat - Medellín - Colombia - Gorilla Girl®  
2022 - 1<sup>st</sup> P - Outdoor - II Copa Seshat - Medellín - Colombia - Tropicanna Poison F1 Fast Version®  
2022 - 2<sup>nd</sup> P - Outdoor Indica - V Copa Farallones - Santiago de Cali - Colombia - S.A.D. Sweet Afgani Delicious S1®  
2022 - 2<sup>nd</sup> P - Indoor - III Portugal Weed Masters - Portugal - Green Poison®  
2022 - 3<sup>rd</sup> P - Resin - III Portugal Weed Masters - Portugal - Green Poison®  
2022 - 1<sup>st</sup> P - Outdoor - III Copa Cogollos Libertadores del Noa - Salta - Argentina - Cream Caramel®  
2022 - Best solventless indoor flower - III Copa Cogollos Libertadores del Noa - Salta - Argentina - Cream Caramel®  
2022 - 1<sup>st</sup> P - Best Autoflowering Genetic - 1<sup>st</sup> Grow Diaries POTY - Spannabis - Barcelona - +Speed Auto®  
2019 - 1<sup>st</sup> P - Outdoor - VI Copa Cata del Oeste - Buenos Aires - Argentina - Sweet Amnesia Haze®  
2019 - 1<sup>st</sup> P - Highest THC (31,7%) - Sannabis Cup - Johannesburgo - South Africa - Gorilla Girl®  
2019 - 1<sup>st</sup> P - Autoflowering - Copa Cata Don Cacho - La Rioja - Argentina - Red Poison Auto®  
2019 - 3<sup>rd</sup> P - Rosin - II Feira das Mil Flores - Galicia - Green Poison®  
2019 - 1<sup>st</sup> P - Hachis Amateur - II Grow Barato Cup - Xaló - Green Poison®  
2019 - 1<sup>st</sup> P - Global Classification - XXII Copa de la Marihuana (AMEC) - Madrid - Green Poison®  
2019 - 1<sup>st</sup> P - Presence - XXII Copa de la Marihuana (AMEC) - Madrid - Green Poison®  
2019 - 2<sup>nd</sup> P - Taste - XXII Copa de la Marihuana (AMEC) - Madrid - Green Poison®  
2019 - 1<sup>st</sup> P - Effect - XXII Copa de la Marihuana (AMEC) - Madrid - Green Poison®  
2019 - Champion - VI Copa Cata del Oeste - Buenos Aires - Argentina - San Fernando Lemon kush®  
2019 - Mention - Best Appearance - 5ª Copa Cata Zona Norte - Buenos Aires - Argentina - Sweet Tai®  
2018 - 2<sup>nd</sup> P - Autoflowering - I Copa Esmeralda - Colombia - Big Devil XL Auto®  
2018 - 3<sup>rd</sup> P - Outdoor - 4ª Copa Cata Zona Norte - Buenos Aires - Argentina - S.A.D. Sweet Afgani Delicious F1 Fast Version®  
2018 - 3<sup>rd</sup> P - Outdoor - II Portugal Weed Masters - Lisboa - Portugal - Cream Caramel®  
2018 - 2<sup>nd</sup> P - BHO - VII Copa San Canuto - Fuerteventura - ACMECAN - Las Palmas - Cream Caramel®  
2018 - 3<sup>rd</sup> P - BHO Professional - VIII Copa THC - Valencia - Supreme Strains - Valencia - San Fernando Lemon Kush®  
2018 - 1<sup>st</sup> P - Extractions - Festival 1422 - Argentina - Green Poison®  
2018 - Mention Local Grower - VIII Copa del Mar - Mar del Plata - Argentina - Green Poison®  
2018 - 3<sup>rd</sup> P - Indoor - Festival 1422 - Argentina - San Fernando Lemon Kush®  
2018 - 1<sup>st</sup> P - Indoor - Festival 1422 - Argentina - Gorilla Girl®  
2017 - 3<sup>rd</sup> P - Indica - III Copa Del Rey - Bogotá - Colombia - Big Foot®  
2017 - 3<sup>rd</sup> P - Indica - II Copa Farallones - Santiago de Cali - Colombia - Bloody Skunk Auto®  
2017 - 2<sup>nd</sup> P - Outdoor - III Biomenorcannabis - Menorca - Killer Kush F1 Fast Version®  
2017 - 1<sup>st</sup> P - Outdoor - III Biomenorcannabis - Menorca - Sweet Cheese®  
2017 - 2<sup>nd</sup> P - Outdoor - Secret Cup Napoli - Napoli - Italy - Black Jack®  
2017 - 1<sup>st</sup> P - Outdoor - VIII Copa Mendoza Cosecha Añeja - Mendoza - Argentina - Green Poison®  
2017 - 3<sup>rd</sup> P - Sativa - II Copa el Copo - Medellín - Colombia - Jack 47®  
2017 - 3<sup>rd</sup> P - Indoor - II Castelló Cannabis Cup - Castellón - Mohan Ram®  
2017 - 2<sup>nd</sup> P - Indoor - I Copa de la manzana - Rio Negro - Argentina - Cream Mandarin XL Auto®  
2016 - 2<sup>nd</sup> P - Best Indica - VI Copa Cannábica de los Andes - Chile - S.A.D. Sweet Afgani Delicious S1®  
2016 - 1<sup>st</sup> P - Indica Indoor - II Copa del Rey - Bogotá - Colombia - Cream Mandarin F1 Fast Version®  
2016 - 3<sup>rd</sup> P - Indoor Sativa - II Copa del Rey - Bogotá - Colombia - Jack 47 F1 Fast Version®  
2016 - 1<sup>st</sup> P - Indoor - II Copa Cata Zona Norte - Argentina - Sweet Skunk F1 Fast Version®  
2016 - 1<sup>st</sup> P - Indoor - II Copa 14-22 Zona Norte - Argentina - Weed Grow Shop - Buenos Aires - Sweet Skunk Auto®  
2016 - 1<sup>st</sup> P - BHO - II Copa del Rey - Bogotá - Colombia - Cream Caramel®  
2016 - 3<sup>rd</sup> P - Outdoor - Growshops - VI Copa THC - Valencia - Grow THC Caravaca - Cream Caramel®  
2016 - 3<sup>rd</sup> P - Outdoor - Copa Genéticas Expocáñamo - Sevilla - Cream Caramel Auto®  
2016 - 2<sup>nd</sup> P - BHO - Cannabis Clubs - VI Copa THC - Valencia - Grow THC Caravaca - Green Poison®  
2016 - 1<sup>st</sup> P - Indoor Professional - III Copa Cannaval - Tenerife - Grow Sweet Seeds® Malasaña - Madrid - Green Poison®  
2016 - 3<sup>rd</sup> P - Autoflowering - IV Cata Invernal ACMF - Miranda de Ebro - Red Poison Auto®  
2016 - 3<sup>rd</sup> P - Indoor - I Copa Litoral de los Poetas - Chile - Psicodelicia®  
2016 - 2<sup>nd</sup> P - Indoor - Growers - V Copa Cannabis - Uruguay - Mohan Ram®  
2016 - 1<sup>st</sup> P - Indoor - VI Copa del Mar - Mar del Plata - Argentina - Ganesh Spirit®  
2016 - 3<sup>rd</sup> P - Outdoor - VII Copa Mendoza Cosecha Añeja - Mendoza - Argentina - Snow Fruit®  
2016 - 1<sup>st</sup> P - Indoor - I Certamen de Horticultura Cannábica - Montevideo - Uruguay - Black Jack®  
2015 - 3<sup>rd</sup> P - Outdoor - I Copa del Rey - Bogotá - Colombia - Jack 47®  
2015 - 1<sup>st</sup> P - Popular Outdoor Tasting - II Secret Cup Islas Canarias - Tenerife - La flor del valle growshop - Cream Caramel®  
2015 - 1<sup>st</sup> P - BHO Extracts - I Copa Castillo Fuerteventura - Fuerteventura - Cream 47®  
2015 - 2<sup>nd</sup> P - Best Indoor Professional - II Secret Cup Islas Canarias - Tenerife - Cream 47®  
2015 - 3<sup>rd</sup> P - Copa Hash Resin (Dry) - II Secret Cup Islas Canarias - Tenerife - Cream 47®  
2015 - 1<sup>st</sup> P - Indoor - XIV Copa Cannábica del Plata - Crystal Grow - Argentina - Mohan Ram®  
2015 - 1<sup>st</sup> P - Outdoor - VII Copa Asociación Cultivadores Cannabis Villarreal - Grow Pepe Grass - Castellón - Green Poison F1 Fast Version®  
2015 - 1<sup>st</sup> P - Sativa - 3ª Copa Cannábica Catalunya Sud - Tarragona - Sweet Cheese®  
2015 - 2<sup>nd</sup> P - Grows y Cannabis Clubs - VIII Copa C.A.B.A. - Crystal Grow - Argentina - Mohan Ram®  
2015 - 3<sup>rd</sup> P - Outdoor - 1ª Copa Cata Zona Norte (CCZN) - Argentina - Green Poison®  
2014 - 3<sup>rd</sup> P - Indoor - VII Copa C.A.B.A. - Argentina - Green Poison®  
2014 - 2<sup>nd</sup> P - Outdoor - II Axarquia Medical Cup - Málaga - S.A.D. Sweet Afgani Delicious S1®  
2014 - 3<sup>rd</sup> P - Outdoor - III Copa Txapelketa Eusfac Expogrow - Irún - Asociación Nou9Vilannabis - Vilanova del Camí - Cream Caramel®  
2014 - 1<sup>st</sup> P - Outdoor - VII Copa del Gremi Growshops Catalunya Professional - La Paz Greenshop - Vilanova del Camí - Cream Caramel®  
2014 - 2<sup>nd</sup> P - Indica - Barcelona Breeders Cup - Asociación Nou9Vilannabis - Vilanova del camí - Cream Caramel®  
2014 - 1<sup>st</sup> P - BHO - XIV Cannabis Parade - Córdoba - Cream Caramel®  
2014 - 2<sup>nd</sup> P - Indoor Hydro - VII Copa del Gremi Growshops Catalunya Professional - La Paz Greenshop - Vilanova del Camí - Black Jack®  
2014 - 1<sup>st</sup> P - Indoor - Portugal Weed Masters - Portugal - Sweet Tai®  
2014 - 2<sup>nd</sup> P - Outdoor - 3ª Copa Cultivadores de Zion - Argentina - Cream 47®  
2014 - 1<sup>st</sup> P - Indoor - 3ª Copa Cultivadores de Zion - Crystal Grow - Argentina - Mohan Ram®  
2014 - 2<sup>nd</sup> P - Indoor - Portugal Weed Masters - Portugal - Mohan Ram®  
2014 - 3<sup>rd</sup> P - Grows and Cannabis Clubs - VII Copa C.A.B.A. - Crystal Grow - Argentina - Mohan Ram®  
2014 - 3<sup>rd</sup> P - Global Classification - XVIII Copa de la Marihuana (AMEC) - Madrid - Wild Rose®  
2014 - 3<sup>rd</sup> P - Taste - XVIII Copa de la Marihuana (AMEC) - Madrid - Wild Rose®



2014 - 3<sup>rd</sup> P - Effect - XVIII Copa de la Marihuana (AMEC) - Madrid - Wild Rose®  
2013 - 2<sup>nd</sup> P - Hydro - Cata Primer Aniversario ACMF - Miranda de Ebro - Sweet Cheese®  
2013 - 1<sup>st</sup> P - Indoor - IV Cata A.D.E.U.C - Córdoba - Asociación Nou9Vilannabis - Vilanova del Camí - Cream Caramel®  
2013 - 1<sup>st</sup> P - Indoor - VI Copa del Gremi Growshops Catalunya Professional - La Paz Greenshop - Vilanova del Camí - Cream Caramel®  
2013 - 1<sup>st</sup> P - Outdoor - VI Copa del Gremi Growshops Catalunya Professional - Grow Llum Verda - Lleida - Cream Caramel®  
2013 - 1<sup>st</sup> P - Outdoor - VI Copa del Gremi Growshops Catalunya Amateur - Grow Llum Verda - Lleida - Cream Caramel®  
2013 - 2<sup>nd</sup> P - Outdoor - Copa del Mar - Mar del Plata - Argentina - Ice Cool®  
2013 - 1<sup>st</sup> P - Indoor - Copa Mendoza Cosecha Añeja - Mendoza - Argentina - S.A.D. Sweet Afgani Delicious S1®  
2013 - 2<sup>nd</sup> P - Indoor - Copa Mendoza Cosecha Añeja - Mendoza - Argentina - S.A.D. Sweet Afgani Delicious S1®  
2013 - 3<sup>rd</sup> P - Indoor - Copa del Mar - Argentina - Green Poison®  
2013 - 2<sup>nd</sup> P - Indoor - VI Copa C.A.B.A. - Argentina - Green Poison®  
2013 - 2<sup>nd</sup> P - Best Outdoor - Cannabis Canarias Cup - Summer Edition - Jack 47®  
2013 - 2<sup>nd</sup> P - Outdoor - 6ª Coppa dell'Italia Cannabica - Rome - Italy - Double White®  
2013 - 1<sup>st</sup> P - Indoor - 5ª Coppa dell'Italia Cannabica - Rome - Italy - Fast Bud #2 Auto®  
2012 - 3<sup>rd</sup> P - Extracts - 2ª Copa de THC Valencia - Cream Caramel®  
2012 - 1<sup>st</sup> P - Best Indica - Cannabis Canarias Cup - Winter Edition - Cream Caramel®  
2012 - 2<sup>nd</sup> P - Outdoor - XV Bella Flor - Málaga - Cream Caramel®  
2012 - 2<sup>nd</sup> P - Outdoor - Cata Copa de Cultivadores de Cannabis (CCCC) - Argentina - Black Jack®  
2012 - 1<sup>st</sup> P - Best Indica - Cannabis Canarias Cup - Summer Edition - Green Poison®  
2012 - 2<sup>nd</sup> P - Indoor - Cata Copa de Cultivadores de Cannabis (CCCC) - Argentina - Mohan Ram®  
2012 - 3<sup>rd</sup> P - Indoor - 1ª Copa Cannabis - Uruguay - Ganesh Spirit®  
2011 - 2<sup>nd</sup> P - Outdoor - IV Copa Catalunya de Growshops - Grow L'Hort dels Somnis - Barcelona - Cream Caramel®  
2011 - 1<sup>st</sup> P - Outdoor - Copa del Mar - Mar del Plata - Argentina - Ice Cool®  
2011 - 3<sup>rd</sup> P - Outdoor - I Cannabis Cup Nature Grow - Barcelona - S.A.D. Sweet Afgani Delicious S1®  
2011 - Guests Mention - Copa del Mar - Mar del Plata - Argentina - S.A.D. Sweet Afgani Delicious S1®  
2011 - 2<sup>nd</sup> P - Dope Cave Cup - Reino Unido - S.A.D. Sweet Afgani Delicious S1®  
2011 - 2<sup>nd</sup> P - Indoor - IV Copa C.A.B.A. - Argentina - Sweet Tai®  
2011 - 3<sup>rd</sup> P - Outdoor - 1ª Copa THC Valencia - Green Poison®  
2011 - 1<sup>st</sup> P - Best Indica - Cannabis Canarias Cup - Winter Edition - Green Poison®  
2011 - 2<sup>nd</sup> P - Indoor - 1ª Copa Thais María - Alicante - Green Poison®  
2011 - 2<sup>nd</sup> P - XIV Copa de la Marihuana - Madrid - Mohan Ram®  
2011 - 1<sup>st</sup> P - Best Indoor - Cannabis Canarias Cup - Summer Edition - Jack 47®  
2011 - 1<sup>st</sup> P - Outdoor - 1ª Copa Córdoba Verano - Argentina - Jack 47®  
2011 - 1<sup>st</sup> P - Indoor - Cata Copa Cannabis Café - Argentina - Flash Back #2®  
2011 - 2<sup>nd</sup> P - Indoor - Copa del Plata - Argentina - Flash Back #2®  
2011 - 1<sup>st</sup> P - Autoflowering - I Cannabis Cup Nature Grow - Barcelona - Fast Bud #2 Auto®  
2010 - 1<sup>st</sup> P - Outdoor - III Copa del Gremi Growshops Catalunya - Grow Llum Verda - Lleida - Cream Caramel®  
2010 - 1<sup>st</sup> P - Best Indoor - Canarias Cannabis Cup - Summer Edition - Wild Rose®  
2010 - 1<sup>st</sup> P - I Copa de la Marina Baixa - Alicante - Speed Devil Auto®  
2009 - 1<sup>st</sup> P - Outdoor - IV Encuentro Por La Normalización Y El Consumo Responsable - El Punto - Málaga - Cream Caramel®  
2009 - 2<sup>nd</sup> P - Outdoor - IV Encuentro Por La Normalización Y El Consumo Responsable - El Punto - Málaga - Cream Caramel®  
2009 - 1<sup>st</sup> P - Indoor Hydro - IV Encuentro Por La Normalización Y El Consumo Responsable - El Punto - Málaga - Black Jack®  
2009 - 2<sup>nd</sup> P - Indoor - Fumaria - Lleida - Black Jack®  
2009 - 3<sup>rd</sup> P - Indoor Hydro - 1ª Copa THC Skunk - Donostia - Black Jack®  
2009 - 2<sup>nd</sup> P - Indoor Bio - 3ª Coppa Italia Antiproibizionista - Rome - Italy - Ice Cool®  
2009 - 1<sup>st</sup> P - Indoor Bio - 3ª Coppa Italia Antiproibizionista - Rome - Italy - S.A.D. Sweet Afgani Delicious S1®  
2009 - 1<sup>st</sup> P - Best Indoor - Canarias Cannabis Cup - Wild Rose®  
2008 - 1<sup>st</sup> P - Outdoor - Copa del Gremi Growshops Catalunya Professional - Grow Llum Verda - Lleida - Cream Caramel®  
2008 - 1<sup>st</sup> P - Outdoor - 2ª Coppa D'Italia Cannabica - Rome - Italy - Cream Caramel®  
2008 - 1<sup>st</sup> P - Indoor Hydro - III Encuentro Por La Normalización Y El Consumo Responsable - El Punto - Málaga - Black Jack®  
2008 - 2<sup>nd</sup> P - Best Hashish - X Revolta Verde - Girona - Black Jack®  
2008 - 3<sup>rd</sup> P - Outdoor - V Copa Bitox - Sabadell - Black Jack®  
2008 - 2<sup>nd</sup> P - Popular Prize - III Encuentro Por La Normalización Y El Consumo Responsable - El Punto - Málaga - Ice Cool®  
2008 - 3<sup>rd</sup> P - Semilla del Millón - XI Bella Flor - Málaga - S.A.D. Sweet Afgani Delicious S1®  
2008 - 1<sup>st</sup> P - Global Classification - XII Copa de la Marihuana (AMEC) - Madrid - S.A.D. Sweet Afgani Delicious S1®  
2008 - 1<sup>st</sup> P - Taste - XII Copa de la Marihuana (AMEC) - Madrid - S.A.D. Sweet Afgani Delicious S1®  
2008 - 1<sup>st</sup> P - V Copa de Asturias - Sweet Tai®  
2008 - 1<sup>st</sup> P - Indoor - I Copa el Jardí D'en Jah - Barcelona - Sweet Tai®  
2008 - 2<sup>nd</sup> P - Semilla del Millón - XI Bella Flor - Málaga - Wild Rose®  
2007 - 1<sup>st</sup> P - Indoor Soil - Copa de Oiartzun - Cream Caramel®  
2007 - 1<sup>st</sup> P - VII Copa Lanzarote - Ice Cool®  
2007 - 2<sup>nd</sup> P - Semilla del Millón - X Bella Flor - Málaga - Ice Cool®  
2007 - 1<sup>st</sup> P - Semilla del Millón - X Bella Flor - Málaga - S.A.D. Sweet Afgani Delicious S1®  
2006 - 1<sup>st</sup> P - Copa del Plata 06 - Buenos Aires - Argentina - S.A.D. Sweet Afgani Delicious S1®  
2006 - 1<sup>st</sup> P - Outdoor - Txapelketa 06 - Andoain - Sweet Tai®  
2006 - 1<sup>st</sup> Mention - Trofeo Mención del Plata - Buenos Aires - Argentina - Sweet Tai®  
2006 - 2<sup>nd</sup> Mention - Trofeo Mención del Plata - Buenos Aires - Argentina - Sweet Tai®

LEGAL WARNING: Cannabis seeds are not regulated under the Single Convention on Narcotic Drugs, 1961, signed in New York on 30 March, 1961, as amended by the Geneva Protocol of 25 March, 1972, and ratified by the Spanish state. The Single Convention sets out which part or parts of the Cannabis sativa L. plant are regulated; the flowering or fruiting tops of the cannabis plant, as well as the resin obtained from the cannabis plant, but explicitly excludes the seeds. The seeds, therefore, do not form part of the legal concept of cannabis and are omitted from the Convention's Schedules. Cannabis sativa L. seeds do not contain the active substance delta-9-tetrahydrocannabinol (THC). Consequently, in accordance with the Single Convention, the seeds of the cannabis plant are neither regulated nor can they be classified as narcotic drugs. In Spain, the sale, possession and cultivation of cannabis seeds for personal use does not constitute a criminal offence. The Spanish Criminal Code classifies the cultivation of cannabis in order to promote, encourage or facilitate its consumption by third parties as a criminal offence. According to Spanish Supreme Court Public Prosecutor, Fernando SEQUEROS SAZATORNIL, the sale of cannabis for domestic cultivation in quantities apt for its personal consumption and self-supply for the same purpose (including the seeds reproduced from the plants) cannot, in any way, be considered to constitute a criminal offence. The cultivation of cannabis for personal use may constitute an administrative offence pursuant to Article 36.18 of Organic Law 4/2015, of 30 March, on the protection of public safety, if conducted in locations visible to the public. The seeds sold by Sweet Seeds, S.L. are sold for personal use exclusively by adults over 18 years old. Sweet Seeds, S.L. markets the cannabis seeds as items intended for collection or genetic conservation with the specific restriction that they must not be used for any purposes that contravene current legislation. According to the principle of mutual recognition, the European Union Member States may not prohibit the sale on their territory of goods which are lawfully marketed in another Member State, even when those goods have been produced in accordance with different technical rules (Regulation (EU) 2019/515, of 19 March 2019, on the mutual recognition of goods lawfully marketed in another Member State). National laws applicable to cannabis seeds vary greatly between countries. In some, the germination and cultivation of cannabis for personal use, and even the mere possession of the seeds, may constitute a criminal offence. Sweet Seeds, S.L. does not want to incite anyone to violate a current law in their country. Therefore, we urge purchasers who are not resident in Spain to familiarise themselves with applicable local legislation. Sweet Seeds S.L. encourages its customers to act responsibly. Sweet Seeds S.L. accepts no liability for potential legal problems which could arise for purchasers and will not issue a refund for seeds confiscated or refused by the shipping agent or customs service while fulfilling their duties. The fact that some of the descriptions allude to the effects of consumption does not, under any circumstances, mean that they should be consumed, as they are merely informative descriptions. Sweet Seeds S.L. accepts no liability for any decisions the purchaser may take based on this information due to possible typographical errors contained within the documents and graphics on the website or derived from the misuse of the seeds. The information is subject to periodic changes in its content which may be added, improved, corrected or updated without notice.



# MERCHANDISING



Available while stocks last.



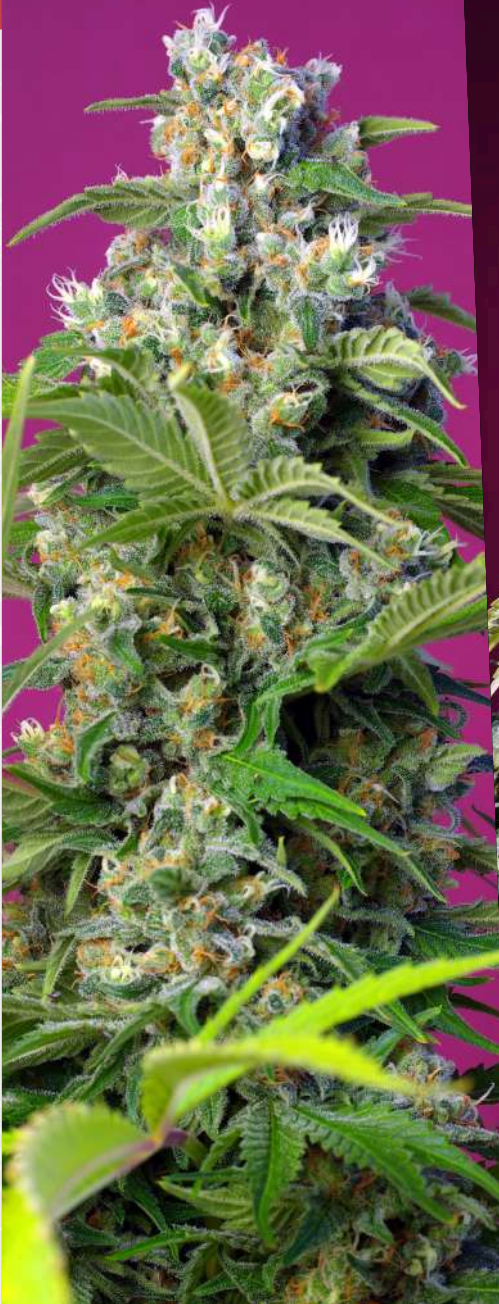
Available while stocks last.



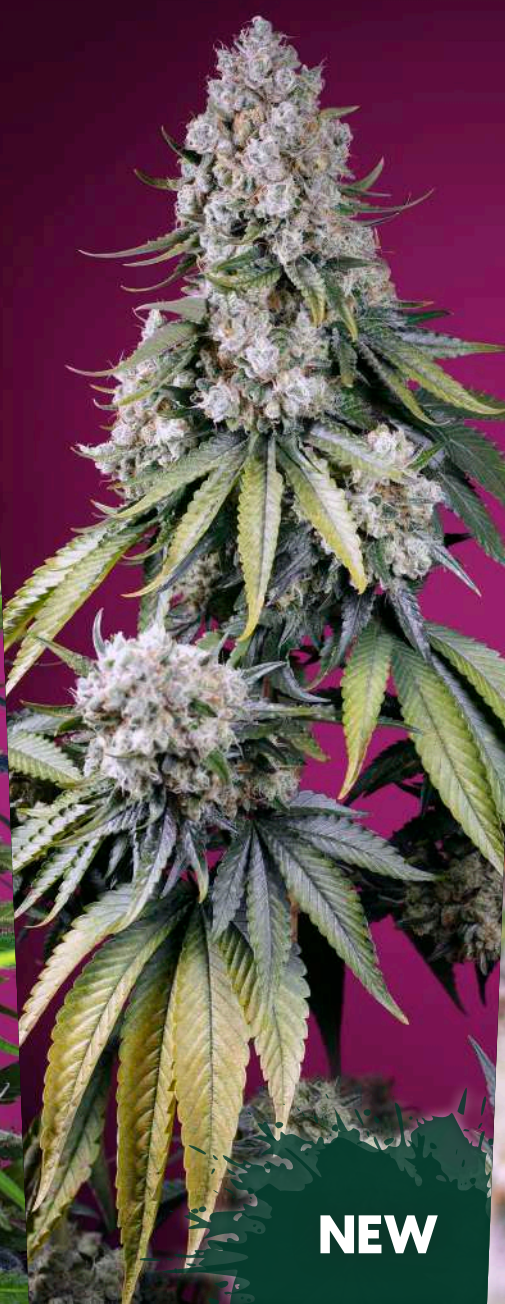


# SUPER STRONG

THE STRONGEST AMERICAN STRAINS



**Gorilla Girl®**  
SWS74



**NEW**

**Jealousy Z XL Auto®**  
SWS108



**Tropicanna Poison XL Auto®**  
SWS95

And more American strains at



Pack **3** ▶ **+1 FREE** // Pack **5** ▶ **+2 FREE**

Packs include seeds of the same strain and quality.